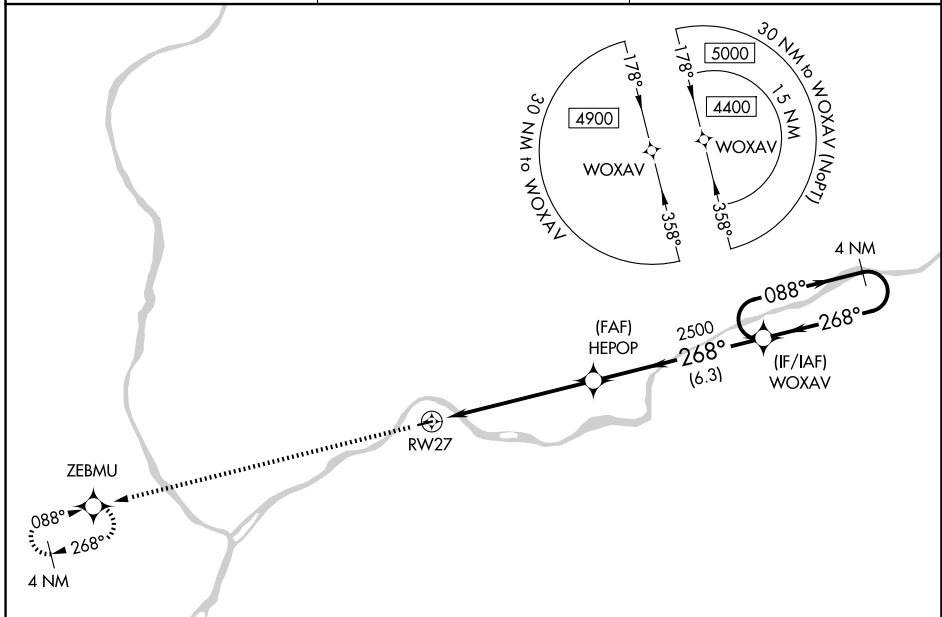


APP CRS <b>268°</b>	Rwy Ldg TDZE Apt Elev	<b>3000</b> <b>559</b> <b>559</b>
------------------------	-----------------------------	---

# RNAV (GPS) RWY 27

DANVILLE (8N8)

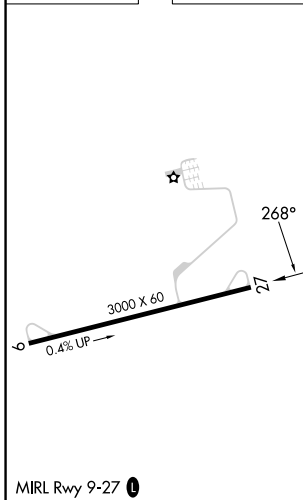
RNP APCH - GPS.		MISSED APPROACH: Climb to 4400 direct ZEBMU and hold, continue climb-in-hold 4400.
▼	Use Williamsport altimeter setting; when not received, procedure NA.	
▲	NA Procedure NA at night. Rwy 27 helicopter visibility reduction below 1 SM NA.	
IPT ASOS <b>125.225</b>	WILKES-BARRE APP CON <b>126.3 256.7</b>	UNICOM <b>122.8 (CTAF)</b>



NE-4, 11 JUN 2026 to 09 JUL 2026

NE-4, 11 JUN 2026 to 09 JUL 2026

ELEV 559	TDZE 559
----------	----------



4400	ZEBMU	Visual Segment - Obstacles.	4 NM Holding Pattern
↑	✧		
RWY 27		HEPOP	WOXAV
6 NM		6.3 NM	4400
		2500	088° → ← 268°
CATEGORY	A	B	C D
LNAV MDA	1540-1¼ 981 (1000-1¼)	1540-1½ 981 (1000-1½)	NA