

WAAS CH <b>69239</b> <b>W36A</b>	APP CRS <b>358°</b>	Rwy Ldg <b>4238</b> TDZE <b>779</b> Apt Elev <b>783</b>
--	------------------------	---

# RNAV (GPS) RWY 36

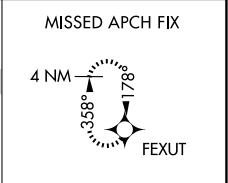
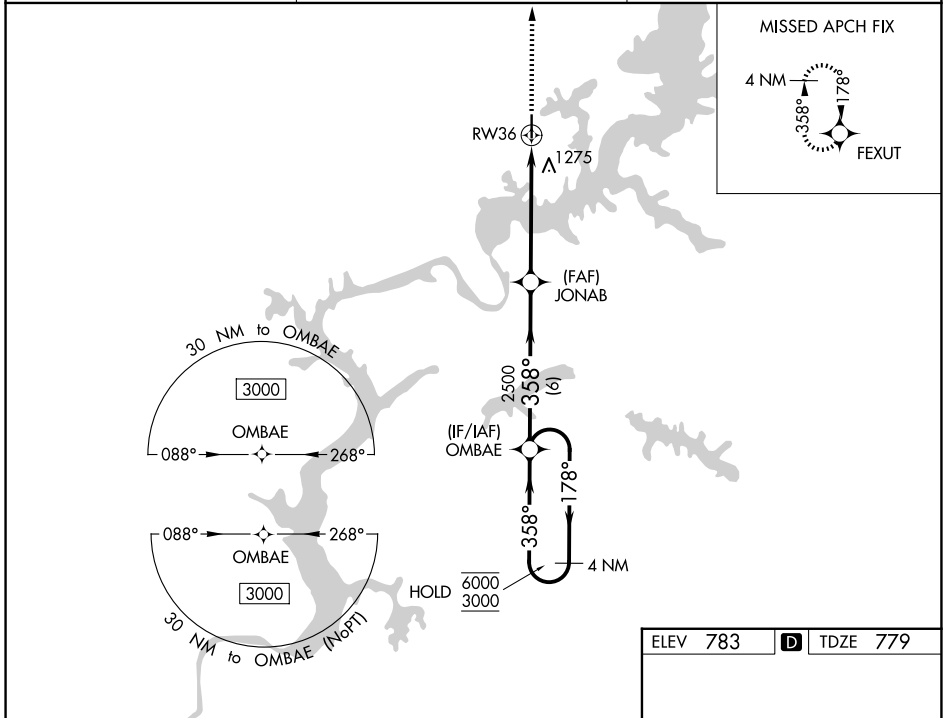
SOUTH GRAND LAKE RGNL (1K8)

RNP APCH - GPS.

**⚠** Circling to Rwy 18 NA at night. Rwy 36 helicopter visibility reduction below 3/4 SM NA. Baro-VNAV NA. When local altimeter setting not received, use Grove altimeter setting.

**⚠** MISSED APPROACH: Climb to 3000 direct FEXUT and hold.

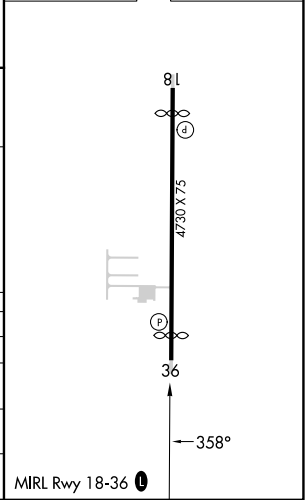
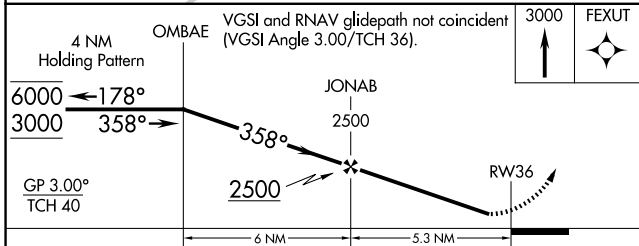
AWOS-3PT <b>118,15</b>	KANSAS CITY CENTER <b>128,6 282,325</b>	CTAF <b>122,9</b>
---------------------------	--	----------------------



SC-1, 11 JUN 2026 to 09 JUL 2026

SC-1, 11 JUN 2026 to 09 JUL 2026

ELEV 783	<b>D</b> TDZE 779
----------	-------------------



CATEGORY	A	B	C	D
LPV DA	1068-1 289 (300-1)			NA
LNAV/VNAV DA	1635-2 1/2 856 (900-2 1/2)			NA
LNAV MDA	1540-1 761 (800-1)	1540-1 1/4 761 (800-1 1/4)	1540-2 1/2 761 (800-2 1/2)	NA
CIRCLING	1540-1 757 (800-1)	1620-1 1/4 837 (900-1 1/4)	1620-2 1/2 837 (900-2 1/2)	NA