

APP CRS	Rwy Idg	4001
187°	TDZE	626
	Apt Elev	626

RNAV (GPS) RWY 19

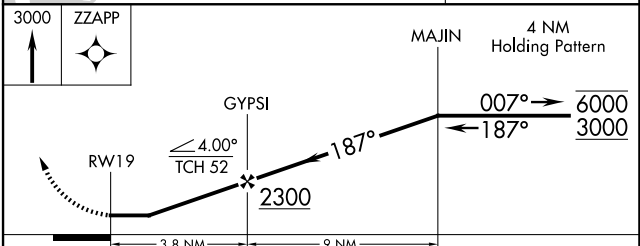
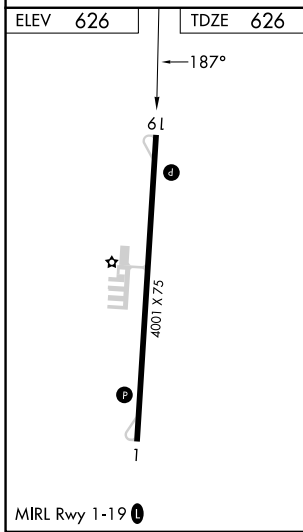
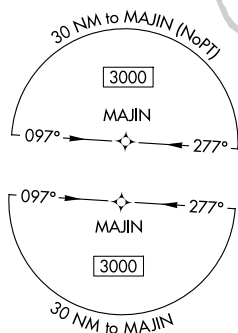
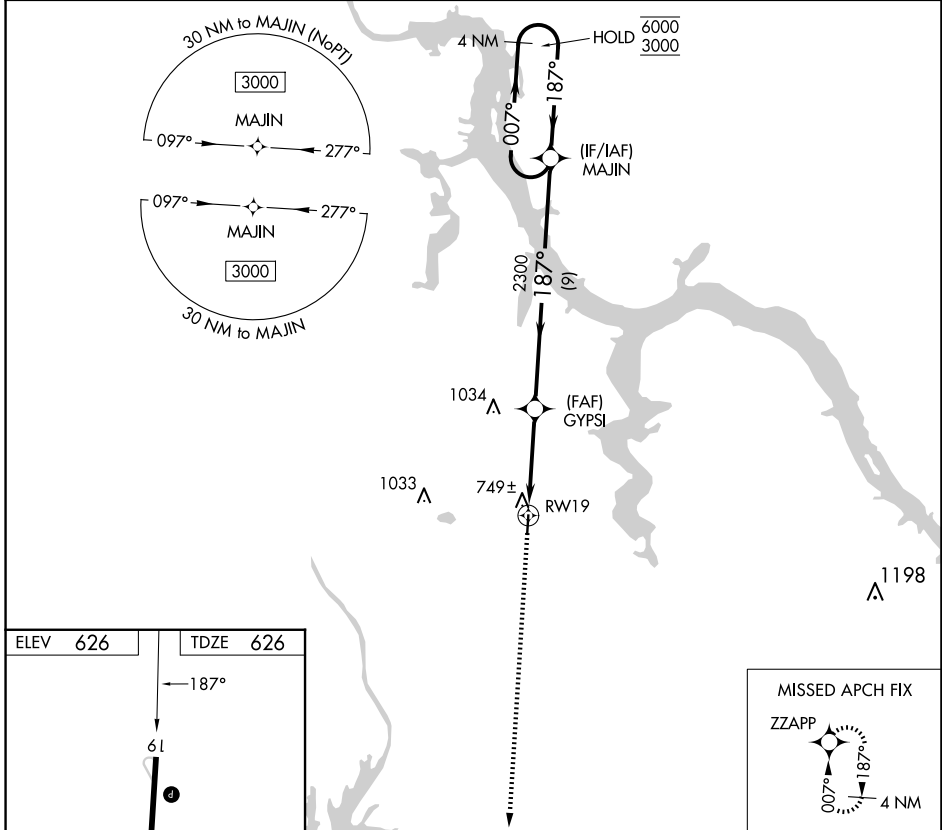
SEGARS FLD (15M)

RNP APCH-GPS.

NA Procedure NA at night. Rwy 19 helicopter visibility reduction below 1 SM NA. Use Muscle Shoals altimeter setting.

MISSED APPROACH: Climb to 3000 direct ZZAPP and hold.

AWOS-3PT 119.250	MSL ASOS 119.425	MEMPHIS CENTER 124.35 318.1	CTAF 122.9
----------------------------	----------------------------	---------------------------------------	----------------------



CATEGORY	A	B	C	D
LNAV MDA	1080-1	454 (500-1)	NA	

SC-4, 11 JUN 2026 to 09 JUL 2026

SC-4, 11 JUN 2026 to 09 JUL 2026