

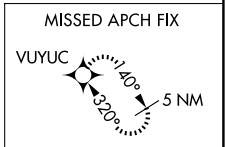
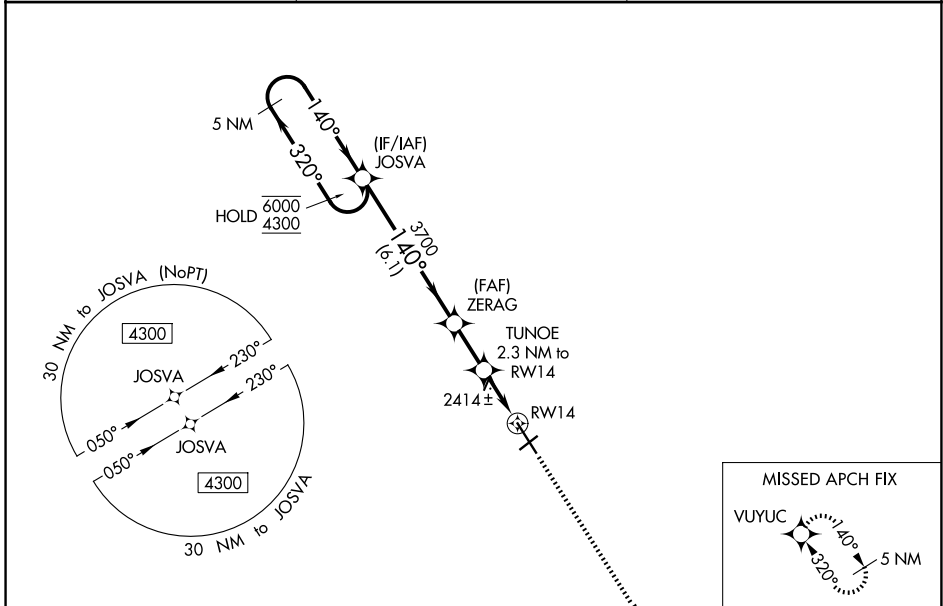
WAAS CH <b>40143</b> <b>W14A</b>	APP CRS <b>140°</b>	Rwy Ldg TDZE Apt Elev	<b>7503</b> <b>2316</b> <b>2353</b>
--	------------------------	-----------------------------	---

# RNAV (GPS) RWY 14

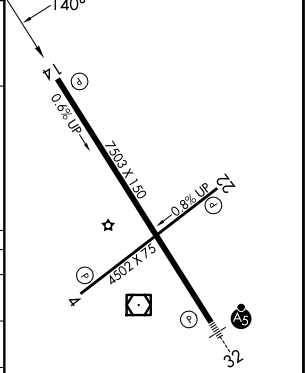
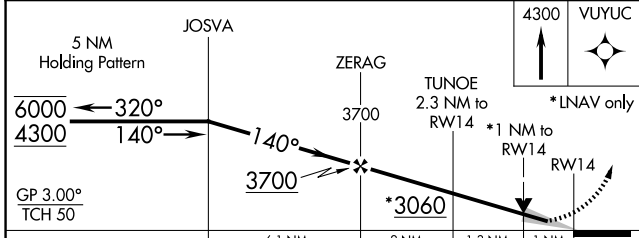
WILLISTON BASIN INTL (XWA)

RNP APCH.	MISSED APPROACH: Climb to 4300 direct VUYUC and hold.
<p>For uncompensated Baro-VNAV systems, LNAV/VNAV NA below -19°C or above 54°C.</p>	

ASOS <b>125.925</b>	SALT LAKE CITY CENTER <b>126.85 305.2</b>	UNICOM <b>122.8 (CTAF) ①</b>
------------------------	--	---------------------------------



ELEV 2353	<b>D</b> TDZE 2316
-----------	--------------------



CATEGORY	A	B	C	D
LPV DA		2516-3/4	200 (200-3/4)	
LNAV/VNAV DA		2577-7/8	261 (300-7/8)	
LNAV MDA		2680-1	364 (400-1)	
CIRCLING	2760-1 407 (500-1)	2820-1 467 (500-1)	2820-1 1/2 467 (500-1 1/2)	2920-2 567 (600-2)

MIRL Rwy 4-22 ①  
HIRL Rwy 14-32 ①  
REIL Rwy 4, 14 and 22 ①

NC-1, 11 JUN 2026 to 09 JUL 2026

NC-1, 11 JUN 2026 to 09 JUL 2026