

WAAS CH 93943 W22A	APP CRS 224°	Rwy Ldg TDZE Apt Elev	4502 2339 2356
--	------------------------	-----------------------------	---

RNAV (GPS) RWY 22

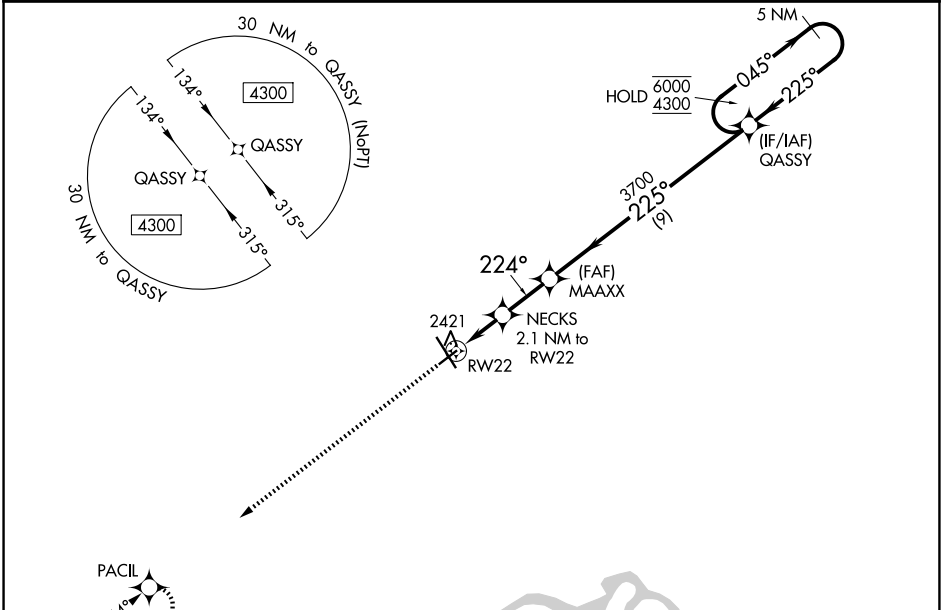
WILLISTON BASIN INTL (XWA)

RNP APCH-GPS.

▽
▲ For uncompensated Baro-VNAV systems, LNAV/VNAV NA below -19°C or above 54°C.

MISSED APPROACH: Climb to 4300 direct PACIL and hold.

ASOS 125.925	SALT LAKE CITY CENTER 126.85 305.2	UNICOM 122.8 (CTAF) 0
------------------------	--	---------------------------------



NC-1, 11 JUN 2026 to 09 JUL 2026

NC-1, 11 JUN 2026 to 09 JUL 2026

ELEV 2356	D TDZE 2339
<p>4300 PACIL</p> <p>*LNAV only</p> <p>NECKS 2.1 NM to RWY 22</p> <p>MAAXX 3700</p> <p>QASSY 5 NM Holding Pattern</p> <p>6000 4300</p> <p>GP 3.00° TCH 40</p> <p>3020*</p> <p>3700</p> <p>045° →</p> <p>← 225°</p> <p>224°</p> <p>225°</p> <p>1.2 NM</p> <p>0.9 NM</p> <p>2.1 NM</p> <p>9 NM</p>	
CATEGORY	A B C D
LPV DA	2539-1 200 (200-1)
LNAV/VNAV DA	2589-1 250 (300-1)
LNAV MDA	2740-1 401 (400-1) 2740-1 1/8 401 (400-1 1/8)
CIRCLING	2760-1 2820-1 2820-1 1/2 2920-2 404 (500-1) 464 (500-1) 464 (500-1 1/2) 564 (600-2)

MIRL Rwy 4-22 0
HIRL Rwy 14-32 0
REIL Rws 4, 14 and 22 0