

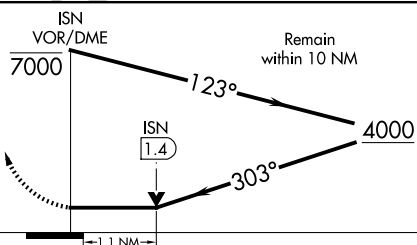
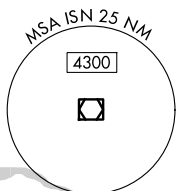
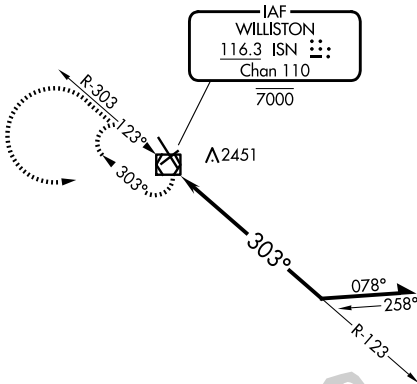
VOR/DME ISN <b>116.3</b> Chan <b>110</b>	APP CRS <b>303°</b>	Rwy Ldg <b>7503</b> TDZE <b>2350</b> Apt Elev <b>2356</b>
--	------------------------	---

# VOR RWY 32

WILLISTON BASIN INTL (XWA)

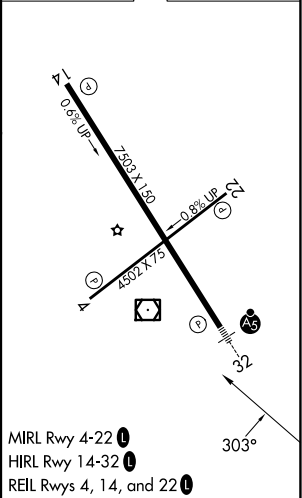
For inop ALS, increase S-32 Cats C/D visibility to 1 1/8 SM.	MALSR	MISSED APPROACH: Climb to 4300 then left turn direct ISN VOR/DME and hold

Procedure NA for arrival on ISN VOR/DME airway radials 081 CW 146.



CATEGORY	A	B	C	D
S-32	2760-1/2	410 (500-1/2)	2760-3/4	410 (500-3/4)
CIRCLING	2760-1 404 (500-1)	2820-1 464 (500-1)	2820-1 1/2 464 (500-1 1/2)	2920-2 564 (600-2)

ELEV 2356		TDZE 2350
-----------	--	-----------



MIRL Rwy 4-22   
HIRL Rwy 14-32   
REIL Rws 4, 14, and 22

NC-1, 11 JUN 2026 to 09 JUL 2026

NC-1, 11 JUN 2026 to 09 JUL 2026