


WAAS CH <b>93742</b> <b>W35A</b>	APP CRS <b>353°</b>	Rwy Ldg TDZE Apt Elev	<b>5500</b> <b>1409</b> <b>1409</b>
--	------------------------	-----------------------------	---

# RNAV (GPS) RWY 35

SIoux COUNTY RGnL (SXX)

RNP APCH - GPS.

**⚠** Baro-VNAV and VDP NA when using LRJ altimeter setting. For uncompensated Baro-VNAV systems, LNAV/VNAV NA below -17°C or above 54°C. When local altimeter setting not received, use LRJ altimeter setting: increase LPV DA to 1668 feet; increase LNAV/VNAV DA to 1718 feet; increase all MDAs 60 feet and LNAV visibility Cat C/D 1/8 SM. For inop ALS, increase LNAV/VNAV all Cats visibility to 3/4 SM, and LNAV Cat C/D visibility to 7/8 SM. For inop ALS when using LRJ altimeter setting, increase LNAV/VNAV all Cats visibility to 7/8 SM, and LNAV Cat C/D visibility to 1 SM.

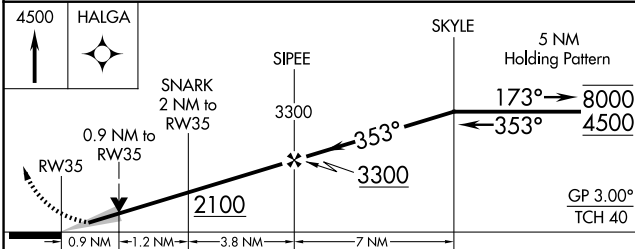
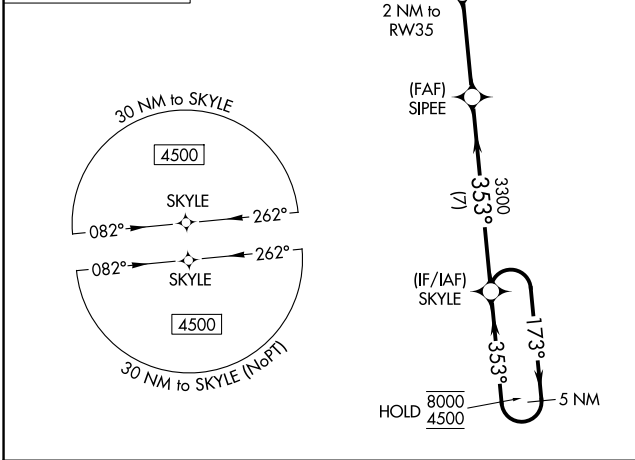
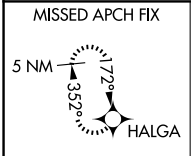
MALSR 

MISSED APPROACH: Climb to 4500 direct HALGA and hold, continue climb-in-hold to 4500.

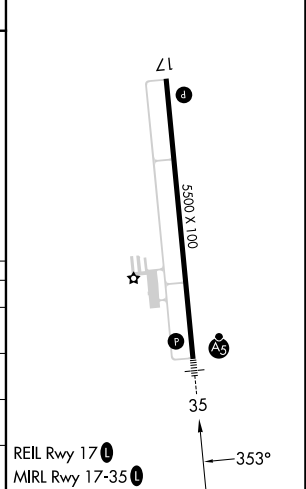
AWOS-3P  
**120.075**

SIoux CITY APP CON \*  
**124.6 307.0**

UNICOM  
**122.7 (CTAF)**



ELEV 1409	TDZE 1409
-----------	-----------



CATEGORY	A	B	C	D
LPV DA		1609-1/2	200 (200-1/2)	
LNAV/VNAV DA		1659-1/2	250 (300-1/2)	
LNAV MDA		1720-1/2	311 (400-1/2)	
CIRCLING	1820-1 411 (500-1)	2080-1 671 (700-1)	2080-2 671 (700-2)	2080-2 1/4 671 (700-2 1/4)

NC-3, 11 JUN 2026 to 09 JUL 2026

NC-3, 11 JUN 2026 to 09 JUL 2026