

|  |                        |   |             |
|--|------------------------|---|-------------|
| WAAS<br>CH <b>41250</b><br><b>W18A</b> | APP CRS<br><b>177°</b> | Rwy Idg<br>TDZE <b>1711</b><br>Apt Elev <b>1711</b> | <b>6064</b> |
|--|------------------------|---|-------------|

# RNAV (GPS) Y RWY 18

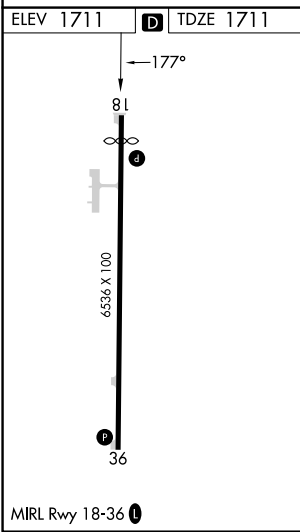
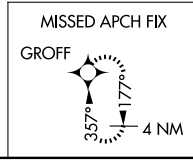
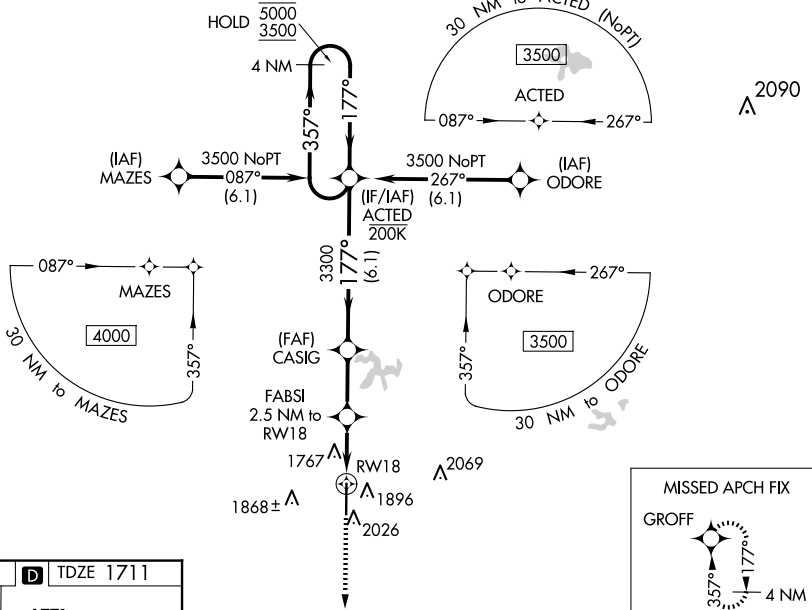
GREGORY M SIMMONS MEML (GZN)

RNP APCH - GPS.

**⚠** Circling NA east of Rwy 18-36. Baro-VNAV and VDP NA when using Eastland altimeter setting. For uncompensated Baro-VNAV systems, LNAV/VNAV NA below -18°C or above 54°C. When local altimeter setting not received, use Eastland altimeter setting and increase LPV DA to 2023 feet; increase LNAV/VNAV DA to 2067 feet; increase all MDAs 80 feet and LNAV visibility Cat C/D 3/8 SM. Rwy 18 helicopter visibility reduction below 3/8 SM NA.

**MISSED APPROACH:**  
Climb to 3700 direct GROFF and hold.

|                        |                                       |                      |
|------------------------|---------------------------------------|----------------------|
| AWOS-4<br><b>118.0</b> | ABILENE APP CON<br><b>125.0 338.3</b> | CTAF<br><b>122.9</b> |
|------------------------|---------------------------------------|----------------------|



|                      |                       |                       |                         |                       |
|----------------------|-----------------------|-----------------------|-------------------------|-----------------------|
| 3700                 | GROFF                 | 4 NM Holding Pattern  |                         |                       |
| FABSI 2.5 NM to RW18 | CASIG 3300            | ACTED                 |                         |                       |
| 1 NM to RW18         | 2540                  | 3300                  |                         |                       |
| 1 NM                 | 1.5 NM                | 2.4 NM                | 6.1 NM                  |                       |
| 5000                 | 3500                  | 357°                  | 177°                    |                       |
| GP 3.00° TCH 45      |                       |                       |                         |                       |
| CATEGORY             | A                     | B                     | C                       | D                     |
| LPV DA               | 1961-1                |                       | 250 (300-1)             |                       |
| LNAV/VNAV DA         | 1985-1                |                       | 274 (300-1)             |                       |
| LNAV MDA             | 2060-1                |                       | 349 (400-1)             |                       |
| CIRCLING             | 2140-1<br>429 (500-1) | 2180-1<br>469 (500-1) | 2180-1½<br>469 (500-1½) | 2600-3<br>889 (900-3) |

SC-2, 11 JUN 2026 to 09 JUL 2026

SC-2, 11 JUN 2026 to 09 JUL 2026