

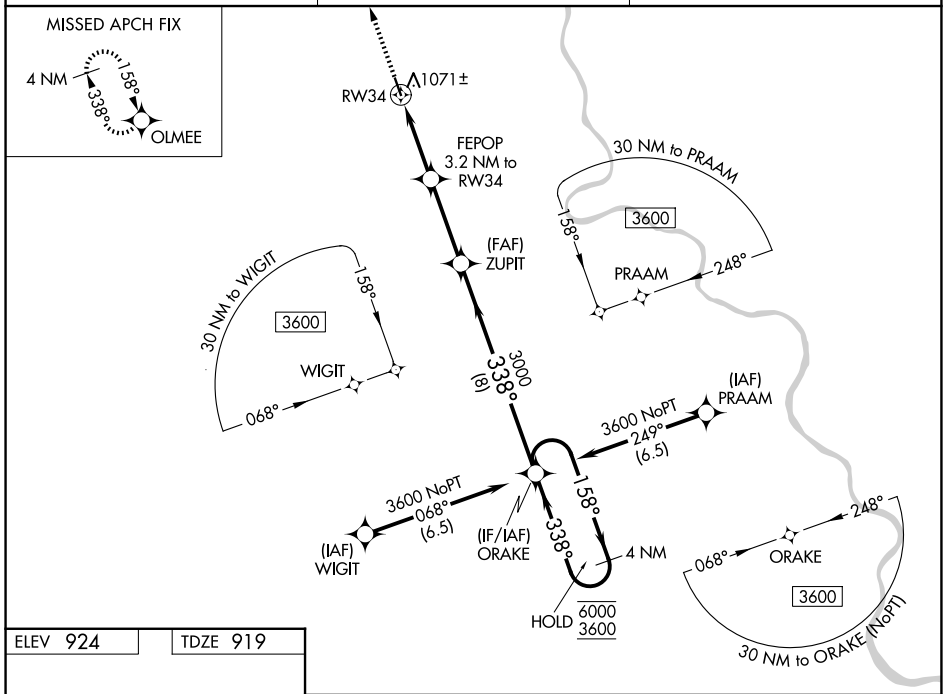
WAAS CH 42842 W34A	APP CRS 338°	Rwy Ldg 3750 TDZE 919 Apt Elev 924
--	------------------------	---

RNAV (GPS) RWY 34

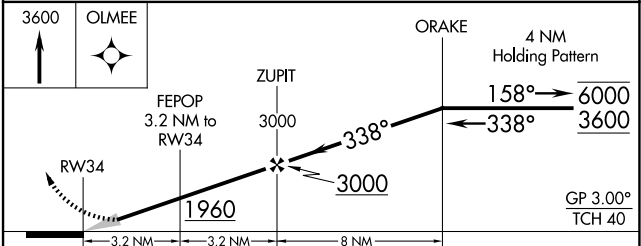
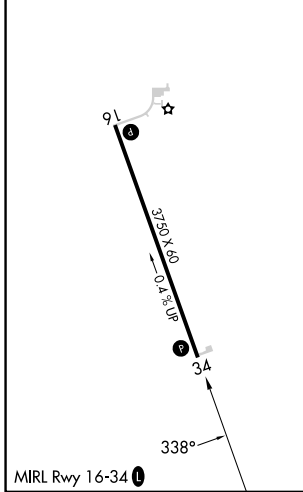
FARINGTON FLD (K01)

RNP APCH - GPS.	MISSED APPROACH: Climb to 3600 direct OLMEE and hold.
Circling NA for Cat C west of Rwy 16-34. Baro-VNAV NA. Use FNB altimeter setting.	

FNB ASOS 119.275	MINNEAPOLIS CENTER 128.75 346.3	CTAF 122.9 0
----------------------------	---	------------------------



ELEV 924	TDZE 919
----------	----------



CATEGORY	A	B	C	D
LPV DA	1175-1 256 (300-1)			NA
LNAV/VNAV DA	1302-1 $\frac{1}{8}$ 383 (400-1 $\frac{1}{8}$)			NA
LNAV MDA	1400-1 481 (500-1)	1400-1 $\frac{3}{8}$ 481 (500-1 $\frac{3}{8}$)		NA
CIRCLING	1500-1 576 (600-1)	1540-1 616 (700-1)	1580-1 $\frac{3}{4}$ 656 (700-1 $\frac{3}{4}$)	NA

NC-2, 11 JUN 2026 to 09 JUL 2026

NC-2, 11 JUN 2026 to 09 JUL 2026