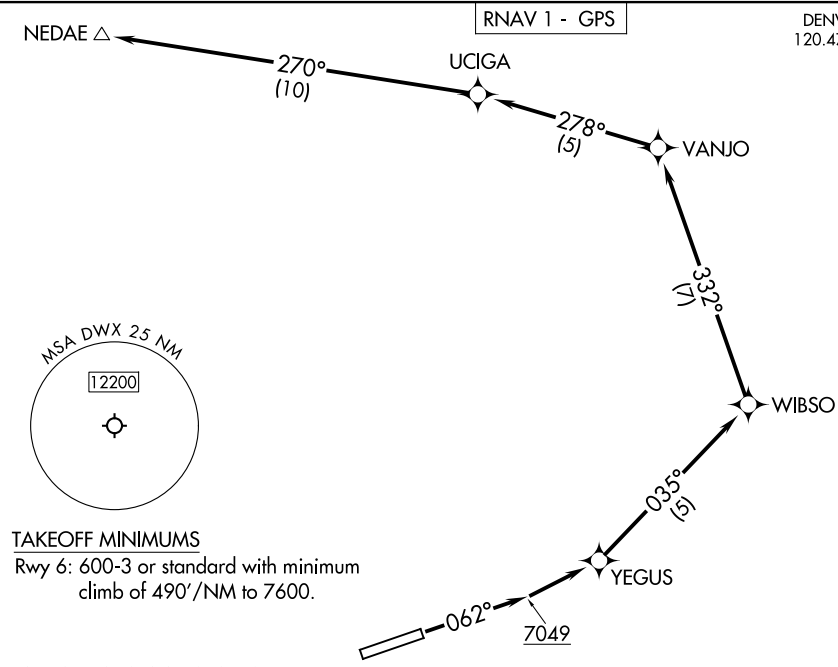


DENVER CENTER  
120.475 235.975  
AWOS-3PT  
119.425  
CTAF  
122.9



**TAKEOFF MINIMUMS**

Rwy 6: 600-3 or standard with minimum climb of 490'/NM to 7600.

**TAKEOFF OBSTACLE NOTES**

- Rwy 6: Fence, light poles, terrain beginning 47' from DER, 70' left of centerline, up to 12' AGL/6570' MSL
- Light poles 49' from DER, 77' right of centerline, 6553' MSL.
- Traverse way, terrain, fence beginning 125' from DER, 2' right of centerline, up to 6570' MSL.
- Traverse way beginning 339' from DER, 224' right of centerline, 6574' MSL.
- Traverse way, terrain, fence beginning 414' from DER, 1' right of centerline, up to 6576' MSL.
- Traverse way, terrain beginning 521' from DER, 107' left of centerline, up to 6575' MSL.
- Traverse way, terrain beginning 547' from DER, 92' left of centerline, up to 6582' MSL.
- Traverse way, terrain, vegetation beginning 697' from DER, 13' left of centerline, up to 6590' MSL.
- Fence 861' from DER, 254' right of centerline, 6' AGL/ 6577' MSL.
- Fence 913' from DER, 225' right of centerline, 8' AGL/ 6579' MSL.
- Vegetation, terrain beginning 1356' from DER, 322' left of centerline, up to 6594' MSL.
- Terrain beginning 1466' from DER, 558' left of centerline, up to 6597' MSL.
- Vegetation, terrain beginning 1651' from DER, 439' left of centerline, up to 6598' MSL.
- Terrain, fence, beginning 1710' from DER, 535' left of centerline, up to 6601' MSL.
- Vegetation, terrain beginning 1823' from DER, 155' left of centerline, up to 6602' MSL.
- Vegetation, terrain beginning 1908' from DER, 639' left of centerline, up to 6608' MSL.
- Vegetation, terrain beginning 2056' from DER, 680' left of centerline, up to 6610' MSL.
- Vegetation, terrain beginning 2280' from DER, 584' left of centerline, up to 6611' MSL.
- Terrain beginning 2365' from DER, 815' left of centerline, up to 6614' MSL.
- Vegetation beginning 2402' from DER, 935' left of centerline, up to 6618' MSL.

(NOTES CONTINUED ON FOLLOWING PAGE)

NOTE: Chart not to scale.

**DEPARTURE ROUTE DESCRIPTION**

**TAKEOFF RUNWAY 6:** Climb on heading 062° to 7049, then climb direct to YEGUS, then on depicted route to NEDAE, thence. . . .

. . . .expect filed altitude 10 minutes after departure.

TAKEOFF OBSTACLE NOTES

Rwy 6: Terrain, vegetation beginning 2571' from DER, 959' left of centerline, up to 6622' MSL.  
 Vegetation, terrain beginning 2854' from DER, 539' left of centerline, up to 6625' MSL.  
 Vegetation beginning 3034' from DER, 772' left of centerline, up to 6627' MSL.  
 Vegetation, terrain beginning 3114' from DER, 598' left of centerline, up to 6635' MSL.  
 Terrain, vegetation, beginning 3208' from DER, 735' left of centerline, up to 6641' MSL.  
 Vegetation 3261' from DER, 1273' left of centerline, 6643' MSL.  
 Vegetation beginning 3270' from DER, 546' left of centerline, up to 6646' MSL.  
 Vegetation, terrain, fence beginning 3380' from DER, 316' left of centerline, up to 6655' MSL.  
 Vegetation, terrain beginning 3517' from DER, 430' left of centerline, up to 6656' MSL.  
 Vegetation 3575' from DER, 804' left of centerline, 6657' MSL.  
 Vegetation, terrain, fence beginning 3598' from DER, 48' left of centerline, up to 6662' MSL.  
 Terrain 3613' from DER, 360' right of centerline, 6640' MSL.  
 Vegetation 3679' from DER, 290' right of centerline, 6642' MSL.  
 Vegetation 3723' from DER, 573' right of centerline, 6645' MSL.  
 Vegetation 3765' from DER, 160' right of centerline, 6646' MSL.  
 Vegetation, terrain beginning 3772' from DER, 316' right of centerline, up to 6649' MSL.  
 Vegetation, terrain, fence beginning 3793' from DER, 399' left of centerline, up to 6667' MSL.  
 Vegetation 3880' from DER, 648' right of centerline, 6653' MSL.  
 Vegetation, terrain beginning 3883' from DER, 28' left of centerline, up to 6669' MSL.  
 Vegetation, terrain beginning 3897' from DER, 321' right of centerline, up to 6654' MSL.  
 Vegetation 3959' from DER, 465' right of centerline, 6657' MSL.  
 Fence, vegetation, terrain beginning 3968' from DER, 353' left of centerline, up to 3' AGL/6676' MSL.  
 Terrain, vegetation beginning 4026' from DER, 27' right of centerline, up to 6659' MSL.  
 Terrain, vegetation, tree beginning 4027' from DER, 182' left of centerline, up to 6680' MSL.  
 Vegetation, terrain beginning 4093' from DER, 575' right of centerline, up to 6664' MSL.  
 Vegetation 4135' from DER, 1340' left of centerline, 6682' MSL.  
 Fence, terrain, vegetation beginning 4141' from DER, 10' left of centerline, up to 4' AGL/6690' MSL.  
 Vegetation 4147' from DER, 311' right of centerline, 6668' MSL.  
 Vegetation, terrain beginning 4187' from DER, 88' right of centerline, up to 6671' MSL.  
 Terrain, vegetation beginning 4235' from DER, 326' left of centerline, up to 6695' MSL.  
 Fence 4323' from DER, 1107' left of centerline, 3' AGL/6701' MSL.  
 Vegetation, terrain beginning 4355' from DER, 127' left of centerline, up to 6710' MSL.  
 Terrain, vegetation beginning 4391' from DER, 152' left of centerline, up to 6712' MSL.  
 Vegetation 4414' from DER, 489' right of centerline, 6681' MSL.  
 Terrain, vegetation beginning 4445' from DER, 434' left of centerline, up to 6714' MSL.  
 Terrain 4452' from DER, 305' right of centerline, 6683' MSL.  
 Vegetation, terrain beginning 4461' from DER, 182' right of centerline, up to 6684' MSL.  
 Terrain 4495' from DER, 535' right of centerline, 6685' MSL.  
 Fence, vegetation, terrain beginning 4497' from DER, 5' left of centerline, up to 4' AGL/6718' MSL.  
 Terrain, vegetation beginning 4508' from DER, 79' right of centerline, up to 6687' MSL.  
 Terrain, vegetation beginning 4537' from DER, 159' left of centerline, up to 6736' MSL.  
 Vegetation, terrain beginning 4615' from DER, 504' right of centerline, up to 6692' MSL.  
 Terrain, vegetation beginning 4627' from DER, 252' left of centerline, up to 6745' MSL.  
 Terrain 4676' from DER, 275' right of centerline, 6696' MSL.  
 Vegetation, fence beginning 4678' from DER, 983' left of centerline, up to 6750' MSL.  
 Terrain 4696' from DER, 491' right of centerline, 6697' MSL.  
 Vegetation, terrain beginning 4702' from DER, 358' right of centerline, up to 6699' MSL.  
 Vegetation, terrain beginning 4728' from DER, 124' right of centerline, up to 6701' MSL.  
 Terrain beginning 4734' from DER, 460' left of centerline, up to 6758' MSL.  
 Terrain, fence beginning 4741' from DER, 25' right of centerline, up to 6703' MSL.  
 Terrain, vegetation, fence beginning 4756' from DER, 20' left of centerline, up to 6762' MSL.  
 Vegetation, fence beginning 4822' from DER, 507' right of centerline, up to 6706' MSL.  
 Terrain 4883' from DER, 355' right of centerline, 6709' MSL.  
 Vegetation, terrain, fence beginning 4897' from DER, 12' right of centerline, up to 6716' MSL.  
 Vegetation, terrain, beginning 5044' from DER, 432' right of centerline, up to 6718' MSL.  
 Vegetation, terrain beginning 5082' from DER, 528' right of centerline, up to 6722' MSL.  
 Terrain, vegetation beginning 5108' from DER, 425' right of centerline, up to 6726' MSL.  
 Terrain 5141' from DER, 70' right of centerline, 6730' MSL.  
 Terrain, vegetation beginning 5149' from DER, 206' right of centerline, up to 6731' MSL.

(NOTES CONTINUED ON FOLLOWING PAGE)

NW-1, 11 JUN 2026 to 09 JUL 2026

NW-1, 11 JUN 2026 to 09 JUL 2026

TAKEOFF OBSTACLE NOTES

- Rwy 6: Vegetation, terrain beginning 5184' from DER, 225' right of centerline, up to 6736' MSL.
- Vegetation 5293' from DER, 635' right of centerline, 6740' MSL.
- Vegetation, terrain beginning 5304' from DER, 341' right of centerline, up to 6745' MSL.
- Terrain, vegetation beginning 5330' from DER, 139' left of centerline, up to 6770' MSL.
- Terrain beginning 5332' from DER, 313' right of centerline, up to 6750' MSL.
- Terrain, vegetation, traverse way beginning 5358' from DER, 93' right of centerline, up to 6754' MSL.
- Vegetation, fence beginning 5417' from DER, 227' left of centerline, up to 6772' MSL.
- Vegetation, fence beginning 5434' from DER, 169' right of centerline, up to 6761' MSL.
- Vegetation, traverse way, fence beginning 5457' from DER, 426' right of centerline, up to 6765' MSL.
- Terrain, vegetation beginning 5468' from DER, 253' left of centerline, up to 6792' MSL.
- Terrain, vegetation, fence beginning 5546' from DER, 97' left of centerline, up to 6799' MSL.
- Terrain 5546' from DER, 512' right of centerline, 6771' MSL.
- Terrain, traverse way, vegetation, fence beginning 5553' from DER, 17' right of centerline, up to 6780' MSL.
- Vegetation, traverse way, fence beginning 5628' from DER, 38' right of centerline, up to 6784' MSL.
- Terrain, traverse way, fence, vegetation beginning 5679' from DER, 378' right of centerline, up to 6799' MSL.
- Terrain, vegetation beginning 5684' from DER, 313' left of centerline, up to 6805' MSL.
- Vegetation, terrain, fence beginning 5730' from DER, 12' left of centerline, up to 6814' MSL.
- Terrain 5751' from DER, 158' right of centerline, 6819' MSL.
- Vegetation, terrain, fence, traverse way beginning 5761' from DER, 245' right of centerline, up to 6828' MSL.
- Traverse way, fence, vegetation, terrain beginning 5862' from DER, 106' right of centerline, up to 6830' MSL.
- Terrain, vegetation beginning 5936' from DER, 41' left of centerline, up to 6825' MSL.
- Terrain 5981' from DER, 451' left of centerline, 6826' MSL.
- Terrain, fence, vegetation beginning 5981' from DER, 262' left of centerline, up to 6831' MSL.
- Traverse way, vegetation beginning 5988' from DER, 231' right of centerline, up to 6832' MSL.
- Terrain, fence, traverse way beginning 5994' from DER, 192' right of centerline, up to 6842' MSL.
- Vegetation, terrain, traverse way, fence beginning 6007' from DER, 66' right of centerline, up to 6848' MSL.
- Traverse way, terrain, fence, vegetation beginning 1 NM from DER, 64' left of centerline, up to 6915' MSL.
- Terrain, vegetation beginning 1 NM from DER, 24' right of centerline, up to 6943' MSL.
- Traverse way, vegetation, terrain beginning 1.1 NM from DER, 23' right of centerline, up to 6957' MSL.
- Terrain, vegetation beginning 1.1 NM from DER, 11' left of centerline, up to 6944' MSL.
- Vegetation, terrain beginning 1.2 NM from DER, 7' left of centerline, up to 6986' MSL.
- Vegetation, terrain, traverse way, fence beginning 1.2 NM from DER, 13' right of centerline, up to 6988' MSL.
- Fence, vegetation, terrain beginning 1.4 NM from DER, 58' left of centerline, up to 4' AGL/6997' MSL.
- Fence, vegetation, terrain, tree beginning 1.5 NM from DER, 11' left of centerline, up to 7013' MSL.
- Fence, trees, building beginning 1.5 NM from DER, 3' right of centerline, up to 7002' MSL.
- Fence, trees, terrain, vegetation beginning 1.6 NM from DER, 14' left of centerline, up to 7072' MSL.
- Terrain, vegetation, fence, tree beginning 1.7 NM from DER, 265' left of centerline, up to 7079' MSL.
- Trees, terrain, building, vegetation, traverse way beginning 1.8 NM from DER, 195' left of centerline, up to 7097' MSL.
- Vegetation, terrain, traverse way beginning 1.9 NM from DER, 240' left of centerline, up to 7098' MSL.
- Traverse ways, terrain, vegetation, tree beginning 2 NM from DER, 23' left of centerline, up to 7117' MSL.
- Terrain, vegetation, building, tree beginning 2.3 NM from DER, 1041' left of centerline, up to 7123' MSL.
- Vegetation 2.5 NM from DER, 3077' left of centerline, 6952' MSL.

NW-1, 11 JUN 2026 to 09 JUL 2026

NW-1, 11 JUN 2026 to 09 JUL 2026