

WAAS CH 42644 W35A	APP CRS 355°	Rwy Ldg 4000 TDZE 2631 Apt Elev 2637
----------------------------------------	------------------------	-----------------------------------------------------------------

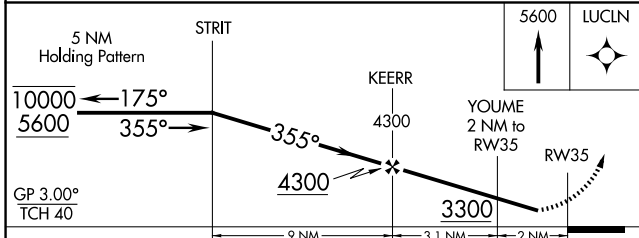
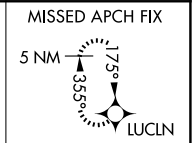
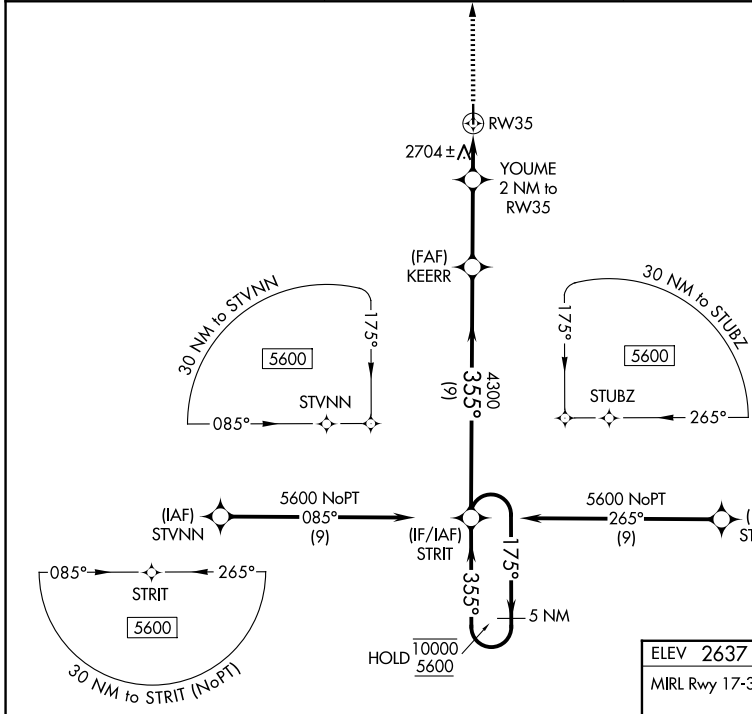
RNAV (GPS) RWY 35

GOVE COUNTY (1QK)

RNP APCH-GPS.
 ▼ Rwy 35 helicopter visibility reduction below 3/4 SM NA.
 ▲ NA Baro-VNAV NA. Use Hill City altimeter setting.

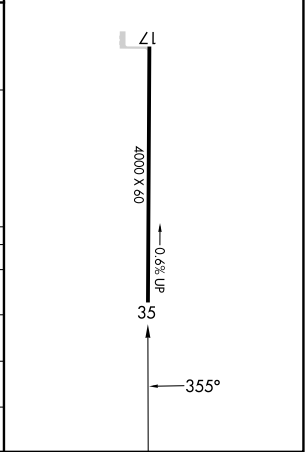
MISSED APPROACH: Climb to 5600 direct LUCLN and hold.

HLC ASOS 118.425	DENVER CENTER 132.7 226.675	CTAF 122.90
----------------------------	---------------------------------------	-----------------------



ELEV 2637	TDZE 2631
MIRL Rwy 17-35	

CATEGORY	A	B	C	D
LPV DA	3001-1	370 (400-1)		NA
LNAV/VNAV DA	3001-1	370 (400-1)		NA
LNAV MDA	3080-1	449 (500-1)		NA
CIRCLING	3340-1 703 (800-1)	3400-1 763 (800-1)		NA



NC-2, 11 JUN 2026 to 09 JUL 2026

NC-2, 11 JUN 2026 to 09 JUL 2026