

APP CRS	Rwy Ldg	5002
320°	TDZE	301
	Apt Elev	301

RNAV (GPS) RWY 32

FRANKLIN FLD (Ø7A)

RNP APCH - GPS.

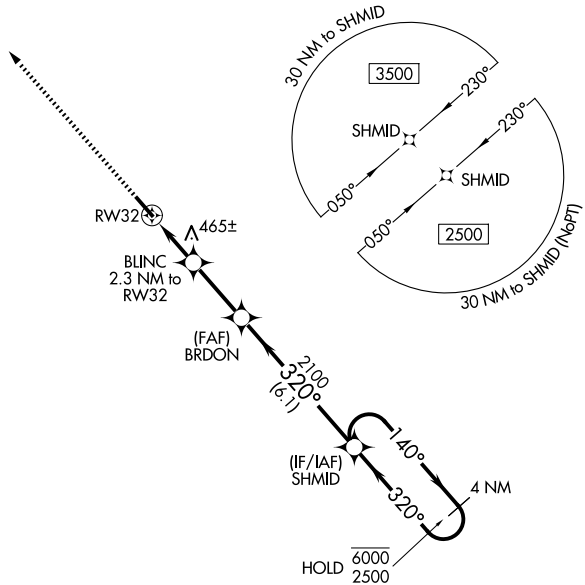
⚠ Rwy 32 helicopter visibility reduction below 1 SM NA. Rwy 32 Straight-in and Circling minimums NA at night. Use TOI altimeter setting.

MISSED APPROACH: Climb to 3500 direct COVLI and hold.

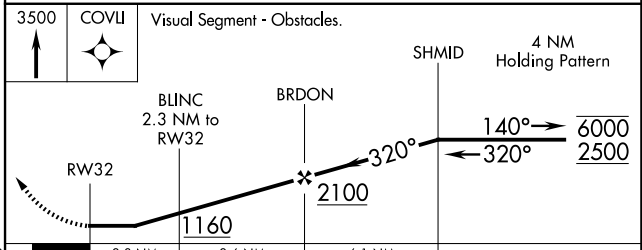
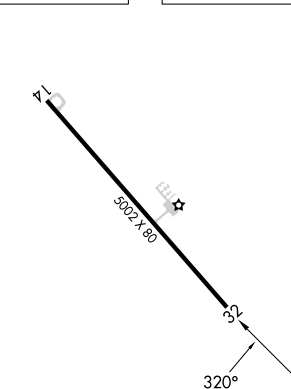
TOI ASOS
120.925

MONTGOMERY APP CON *
121.2 269.05

UNICOM
122.8 (CTAF) **Ø**



ELEV 301 TDZE 301



CATEGORY	A	B	C	D
LNAV MDA	780-1	479 (500-1)	780-1 ³ / ₈	479 (500-1 ³ / ₈)
CIRCLING	840-1	539 (600-1)	900-1 ¹ / ₂ 599 (600-1 ¹ / ₂)	1060-2 ¹ / ₂ 759 (800-2 ¹ / ₂)

REIL Rwy 14 and 32 **Ø**
MIRL Rwy 14-32 **Ø**

SE-4, 11 JUN 2026 to 09 JUL 2026

SE-4, 11 JUN 2026 to 09 JUL 2026