

WAAS CH 65648 W19A	APP CRS 188°	Rwy Ldg TDZE Apt Elev	6100 5049 5065
--	------------------------	-----------------------------	---

RNAV (GPS) RWY 19

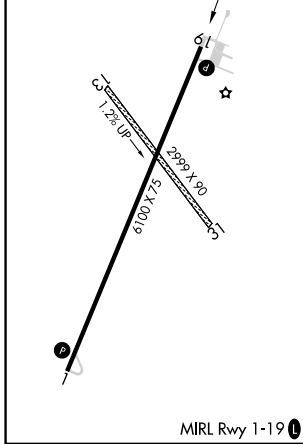
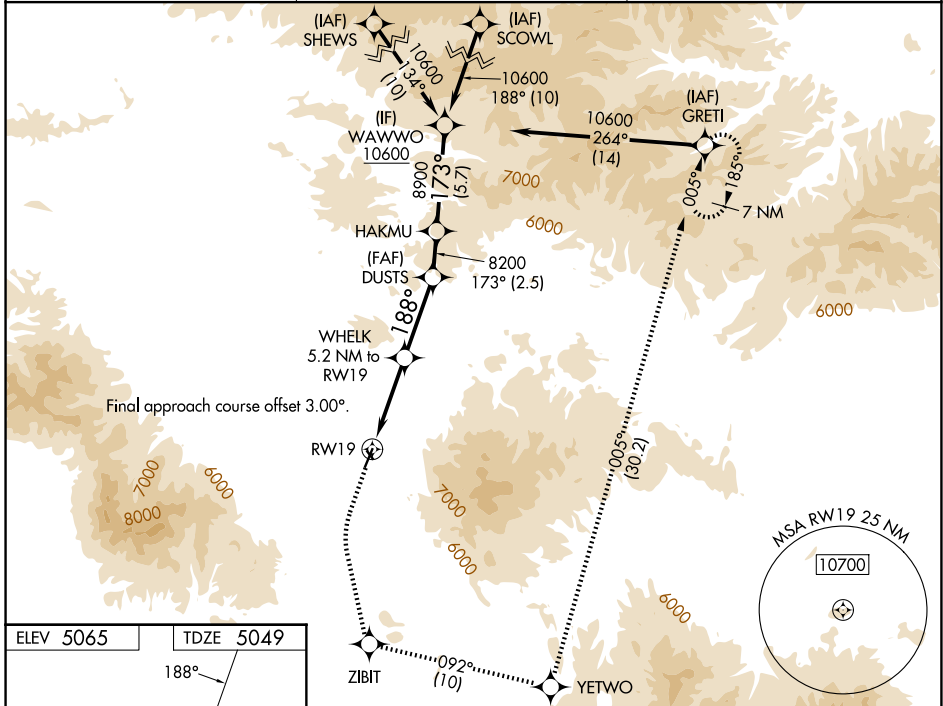
WHITE SULPHUR SPRINGS (7S6)

RNP APCH - GPS.

⚠ For uncompensated Baro-VNAV systems, LNAV/VNAV NA below -25°C or above 54°C. Rwy 19 helicopter visibility reduction below 3/4 SM NA. Circling NA to Rwys 13 and 31. Circling NA for Cats C and D east of Rwy 1-19. Circling NA for all Cats east of Rwy 1-19 at night.

MISSED APPROACH: Climb to 5700 then climbing left turn to 12000 direct ZIBIT then on track 092° to YETWO then on track 005° to GRETI and hold.

AWOS-3PT 118.525	SALT LAKE CENTER 133.4 285.4	CTAF 122.9
----------------------------	--	----------------------



ELEV 5065	TDZE 5049	ZIBIT		YETWO		GRETI		WAWWO	
5700	12000	ZIBIT	tr 092°	YETWO	tr 005°	GRETI	HAKMU	WAWWO	
RWY 19		WHEELK 5.2 NM to RWY 19		DUSTS 8200		HAKMU 8200		WAWWO 10600	
2.5 NM		2.7 NM		4.6 NM		2.5 NM		5.7 NM	
CATEGORY	A	B	C	D					
LPV DA	5299-1				250 (300-1)				
LNAV/VNAV DA	5706-1 7/8				657 (700-1 7/8)				
LNAV MDA	5880-1 831 (900-1)	5880-1 1/4 831 (900-1 1/4)	5880-2 1/2 831 (900-2 1/2)	831 (900-2 1/2)					
CIRCLING	5880-1 1/4 815 (900-1 1/4)	5920-1 1/4 855 (900-1 1/4)	5920-2 1/2 855 (900-2 1/2)	5920-2 3/4 855 (900-2 3/4)					

NW-1, 11 JUN 2026 to 09 JUL 2026

NW-1, 11 JUN 2026 to 09 JUL 2026