

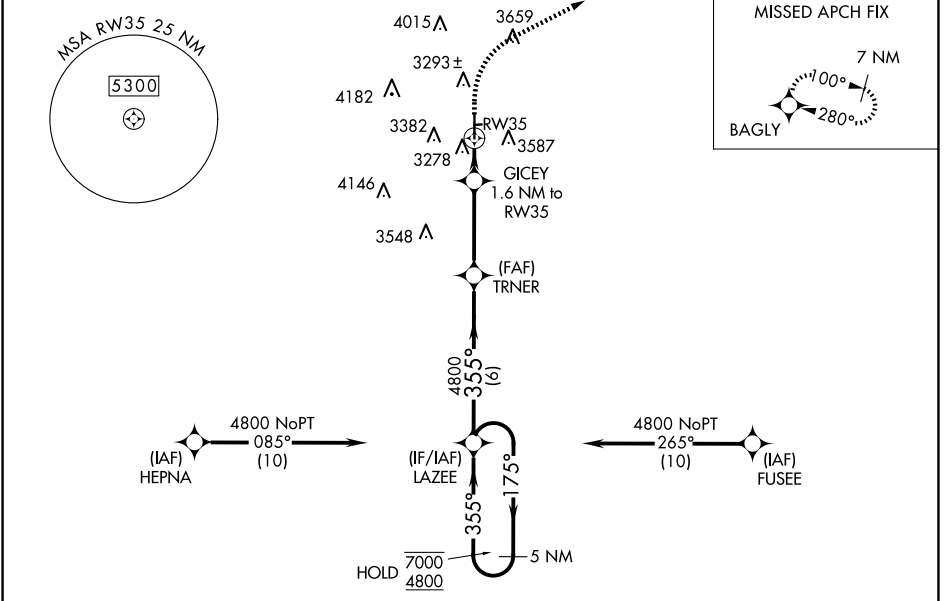
WAAS CH 91519 W35A	APP CRS 355°	Rwy Idg 4759 TDZE 3172 Apt Elev 3176
--	------------------------	---

RNAV (GPS) RWY 35

LUBBOCK EXEC AIRPARK (F82)

RNP APCH - GPS.	MISSED APPROACH: Climb to 3900 then climbing right turn to 6700 direct BAGLY and hold, continue climb-in-hold to 6700. *Missed approach requires minimum climb of 241 feet per NM to 4400.
<p>▼ NA Use LBB altimeter setting. Helicopter visibility reduction below 3/4 SM NA. Circling NA east of Rwy 17-35. Circling Rwy 17, NA at night. Baro-VNAV NA.</p>	

LBB ASOS 125.3 270.275	LUBBOCK APP CON 119.2 351.8	UNICOM 122.8 (CTAF)
----------------------------------	---------------------------------------	-------------------------------



ELEV 3176	TDZE 3172	3900	6700	BAGLY	TRNER	LAZEE	5 NM Holding Pattern
CATEGORY	A	B	C	D			
LPV DA	3462-7/8			290 (300-7/8)	NA		
LNAV/VNAV DA	3469-7/8		297 (300-7/8)	3573-11/8		401 (400-11/8)	
LNAV/VNAV DA*	NA		NA	3469-7/8		297 (300-7/8)	
LNAV MDA	3580-1		408 (500-1)		3720-11/8		548 (600-11/8)
LNAV MDA*	NA		NA		3580-11/8		408 (500-11/8)
CIRCLING	3700-1		3740-1		4580-3		1404 (1500-3)
	524 (600-1)		564 (600-1)		1404 (1500-3)		NA

SC-2, 11 JUN 2026 to 09 JUL 2026

SC-2, 11 JUN 2026 to 09 JUL 2026