

# HI-ILS Z or LOC Z RWY 10L

LOC/DME I-BIL <b>111.5</b> Chan <b>52</b>	APCH CRS <b>102°</b>	Rwy Idg <b>10,518</b> TDZE: <b>3585</b> Arprt Elev <b>3662</b>
---	-------------------------	--

[USAF]

BILLINGS LOGAN INTL (KBIL)

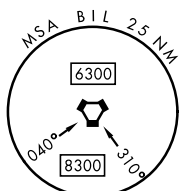
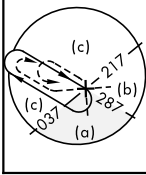
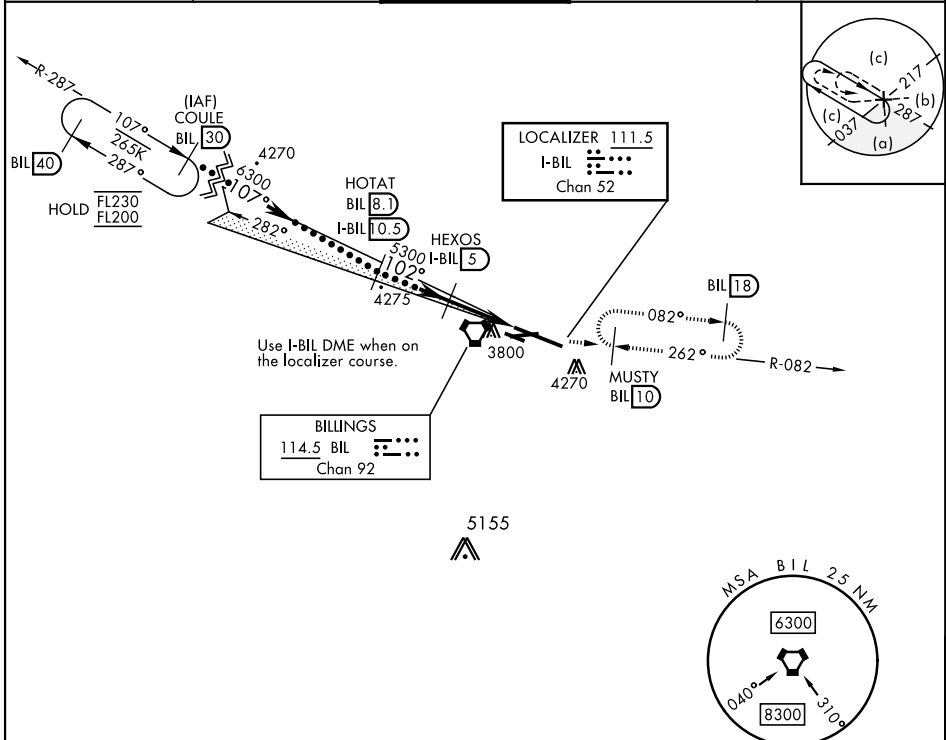
DME required. RADAR required for procedure entry.

▼ \* When ALS inop, increase CAT E RVR to 40.  
\*\* When ALS inop, increase CAT CDE RVR to 60.

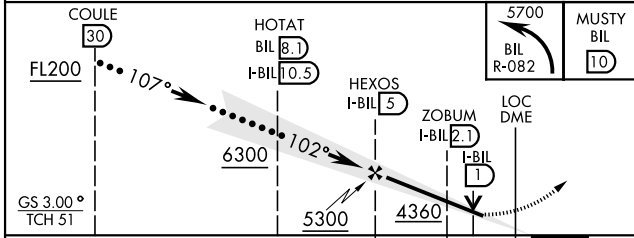


MISSED APPROACH: Climb to 5700 on BIL VORTAC R-082 to MUSTY/10 DME and hold.

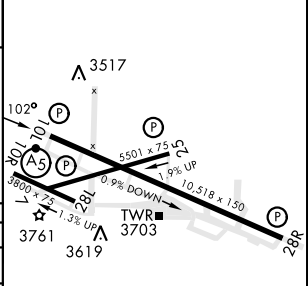
ATIS <b>126.3</b>	BILLINGS APP CON <b>120.5 284.6</b>	BILLINGS TOWER <b>127.2 257.8</b>	GND CON <b>121.9</b>	CLNC DEL <b>121.9</b>
----------------------	--	--------------------------------------	-------------------------	--------------------------



EMERG SAFE ALT 100 NM 15,000



ELEV	3662	TDZE	3585
------	------	------	------



CATEGORY	C	D	E
S-ILS 10L *	3785/24	200 (200-1/2)	
S-LOC 10L **	4000/40	415 (500-3/4)	
CIRCLING	4180-1 1/2 518 (600-1 1/2)	4580-3	918 (1000-3)

REIL Rwy 25 and 28R  
HIRL Rwy 10L-28R  
MIRL Rwy 7-25 and 10R-28L

# HI-ILS Z or LOC Z RWY 10L

NW-1, 09 JUL 2026 to 06 AUG 2026

NW-1, 09 JUL 2026 to 06 AUG 2026