

# HI-VOR or TACAN RWY 28R

VORTAC BIL <b>114.5</b> Chan <b>92</b>	APCH CRS <b>262°</b>	Rwy Idg <b>10,518</b> TDZE <b>3517</b> Arprt Elev <b>3662</b>
--	-------------------------	--

[USAF]

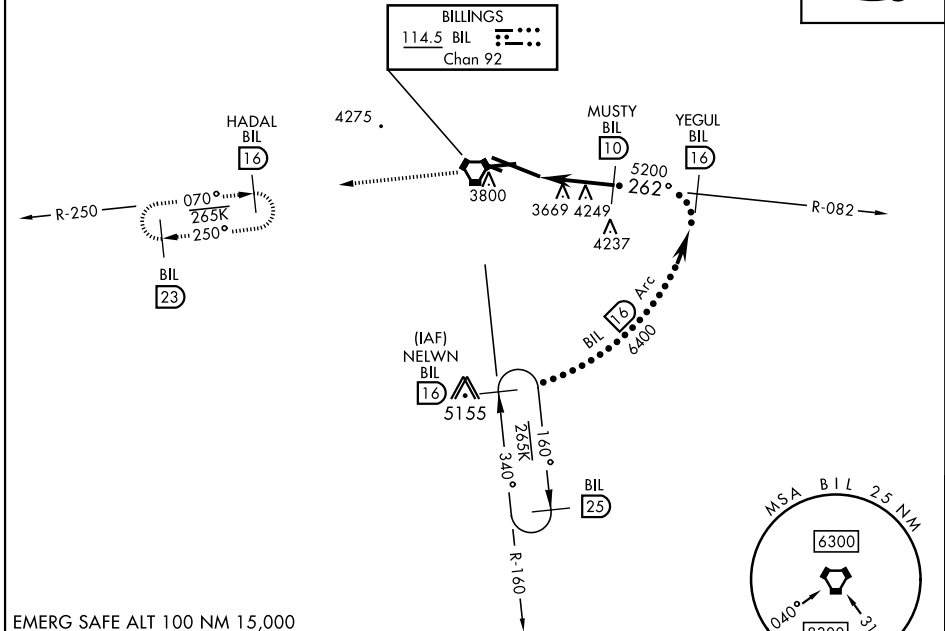
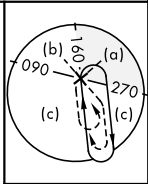
BILLINGS LOGAN INTL (KBIL)

DME required

▼

MISSED APPROACH: Climb to 9000 on BIL VORTAC R-082 to BIL VORTAC, and on BIL VORTAC R-250 to HADAL/16 DME and hold, continue Climb-in-Hold to 9000.

ATIS <b>126.3</b>	BILLINGS APP CON <b>120.5 284.6</b>	BILLINGS TOWER <b>127.2 257.8</b>	GND CON <b>121.9</b>	CLNC DEL <b>121.9</b>
----------------------	--	--------------------------------------	-------------------------	--------------------------

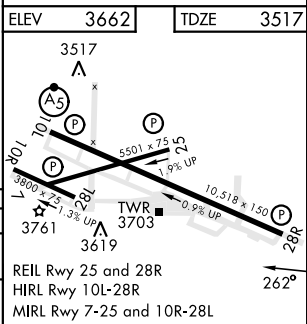


NW-1, 09 JUL 2026 to 06 AUG 2026

NW-1, 09 JUL 2026 to 06 AUG 2026

EMERG SAFE ALT 100 NM 15,000

9000	BIL	HADAL BIL 16
↑	⬆	↑
BIL VORTAC	LATDI BIL 4.6	WYLED BIL 5.8
2.3 NM	3.1 NM	4260
5200	MUSTY BIL 10	YEGUL BIL 16
262°	6400	NELWN BIL 16
2.88°	FL200	
TCH 56	Arc	
CATEGORY	C	D
S-28R	3940-1½	423 (300-1½)
CIRCLING	4180-1½	518 (600-1½)
		4580-3 918 (1000-3)



# HI-VOR or TACAN RWY 28R