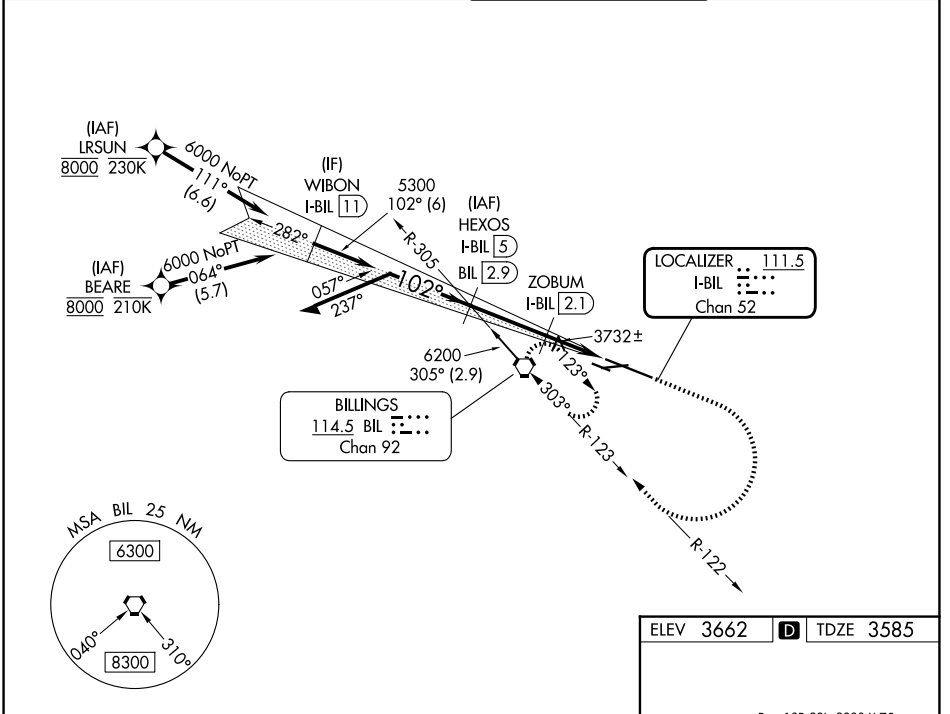


LOC/DME I-BIL <b>111.5</b> Chan <b>52</b>	APP CRS <b>102°</b>	Rwy Ldg TDZE Apt Elev	<b>10518</b> <b>3585</b> <b>3662</b>
---	------------------------	-----------------------------	--

# ILS Y or LOC Y RWY 10L

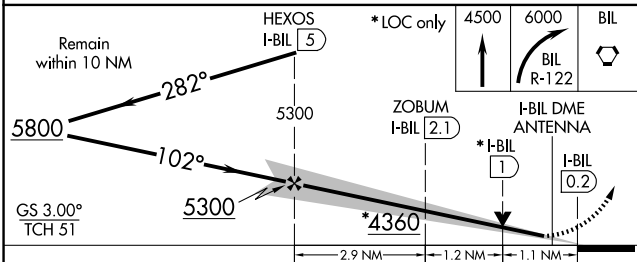
BILLINGS LOGAN INTL (BIL)

DME required. RNP APCH-GPS. From BEARE or LRSUN.		MALSR 	MISSED APPROACH: Climb to 4500 then climbing right turn to 6000 on BIL VORTAC R-122 to BIL VORTAC and hold.
<p><b>⚠</b> For inop ALS, increase S-LOC 10L Cat C/D visibility to RVR 6000.</p> <p><b>⚠</b> # RVR 1800 authorized with use of FD or AP or HUD to DA.</p>			
ATIS <b>126.3</b>	BILLINGS APP CON <b>120.5 284.6</b>	BILLINGS TOWER <b>127.2 257.8</b>	GND CON <b>121.9</b>



NW-1, 09 JUL 2026 to 06 AUG 2026

NW-1, 09 JUL 2026 to 06 AUG 2026



ELEV 3662	<b>D</b> TDZE 3585
<p>Rwy 10R-28L: 3800 X 75 Rwy 7-25: 5501 X 75</p>	
REIL Rwys 25 and 28R HIRL Rwy 10L-28R MIRL Rwys 7-25 and 10R-28L	
FAF to MAP 5.2 NM	
Knots	60 90 120 150 180
Min:Sec	5:12 3:28 2:36 2:05 1:44

CATEGORY	A	B	C	D
S-ILS 10L#	3785/24 200 (200-½)			
S-LOC 10L	4000/24	415 (400-½)	4000/40	415 (400-¾)
CIRCLING	4160-1	498 (500-1)	4180-1½ 518 (600-½)	4580-3 918 (1000-3)