

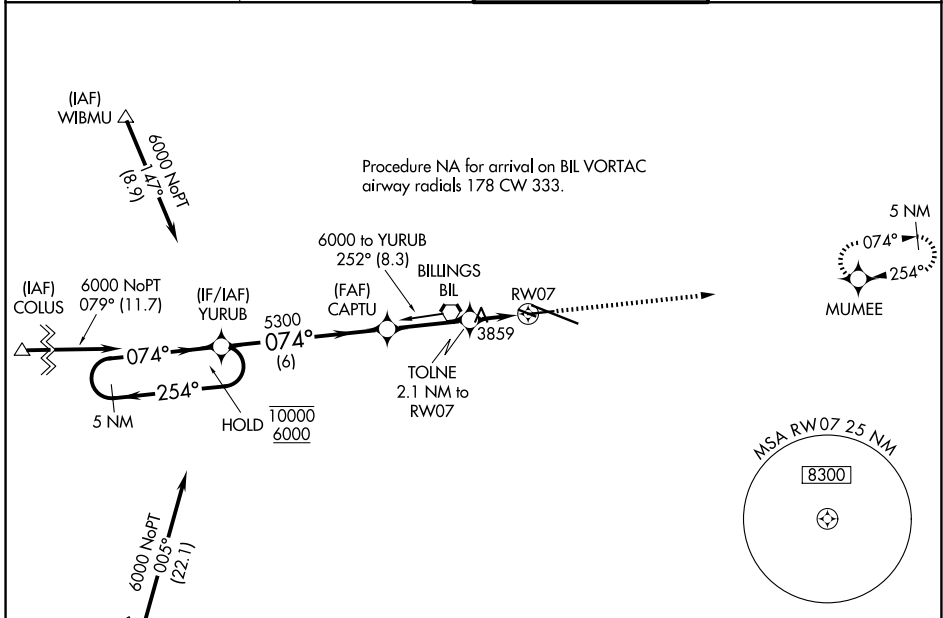
WAAS CH 87127 W07A	APP CRS 074°	Rwy Ldg TDZE Apt Elev	5501 3636 3662
--	------------------------	-----------------------------	---

RNAV (GPS) RWY 7

BILLINGS LOGAN INTL (BIL)

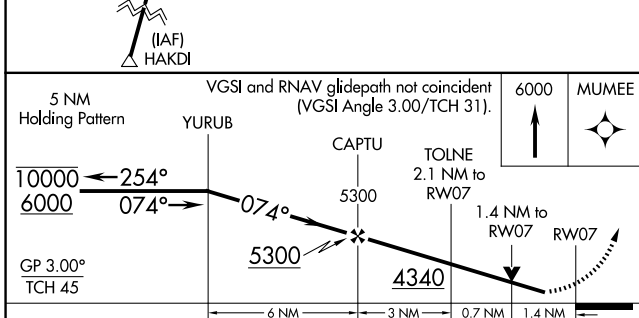
RNP APCH - GPS.	MISSED APPROACH: Climb to 6000 direct MUMEE and hold.
▽ Rwy 7 helicopter visibility reduction below 3/4 SM NA. ▲ For uncompensated Baro-VNAV systems, LNAV/VNAV NA below -25°C or above 53°C.	

ATIS 126.3	BILLINGS APP CON 120.5 284.6	BILLINGS TOWER 127.2 257.8	GND CON 121.9
----------------------	--	--------------------------------------	-------------------------

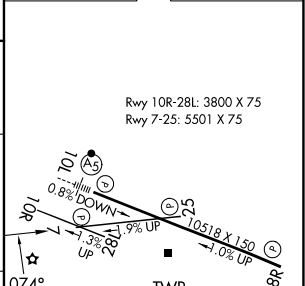


NW-1, 09 JUL 2026 to 06 AUG 2026

NW-1, 09 JUL 2026 to 06 AUG 2026



ELEV 3662	D TDZE 3636
-----------	--------------------



CATEGORY	A	B	C	D
LPV DA	3886-3/4		250 (300-3/4)	
LNAV/VNAV DA	3950-7/8		314 (300-7/8)	
LNAV MDA	4120-1	484 (500-1)	4120-1 3/8	484 (500-1 3/8)
CIRCLING	4160-1	498 (500-1)	4180-1 1/2	4580-3
			518 (600-1 1/2)	918 (1000-3)

REIL Rwsy 25 and 28R
 HIRL Rwy 10L-28R
 MIRL Rwsy 7-25 and 10R-28L