

RNAV (RNP) Z RWY 28R

BILLINGS LOGAN INTL (BIL)

APP CRS **282°**
Rwy Ldg **10518**
TDZE **3517**
Apt Elev **3662**

RNP AR APCH-GPS
▼ For uncompensated Baro-VNAV systems, procedure NA below -24°C or above 50°C.

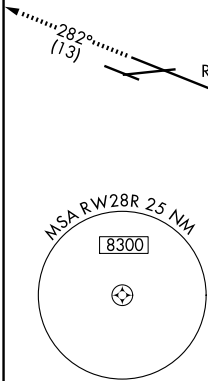
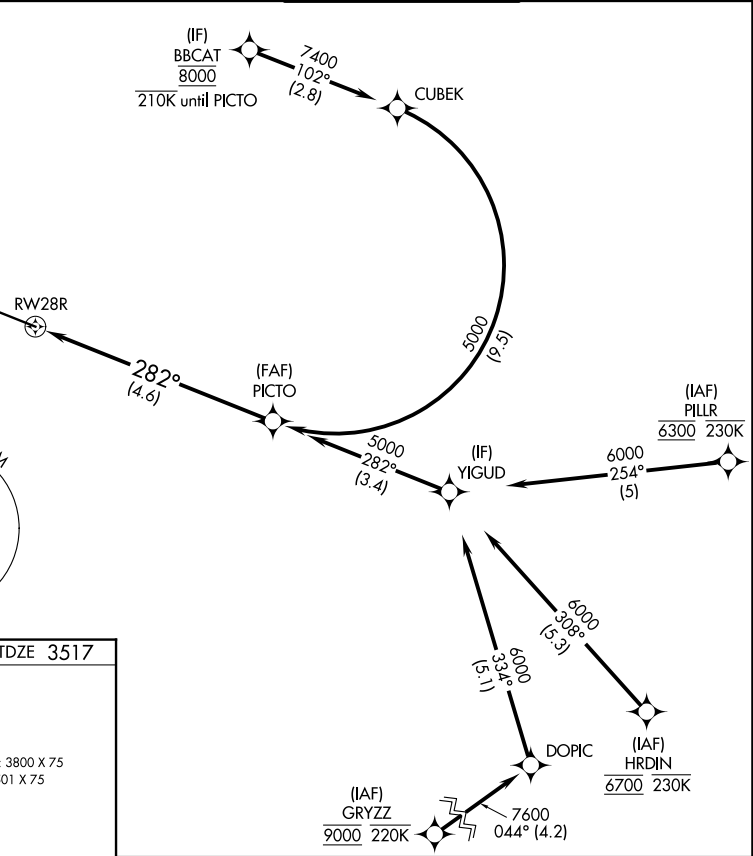
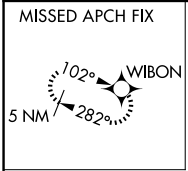
MISSED APPROACH: Climb to 5900 on track 282° to WIBON and hold.

ATIS **126.3**

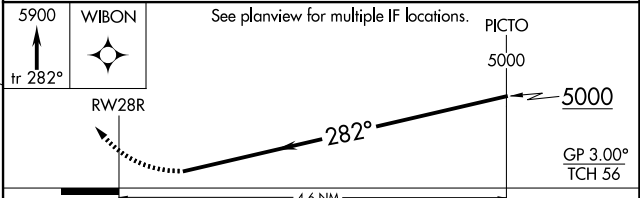
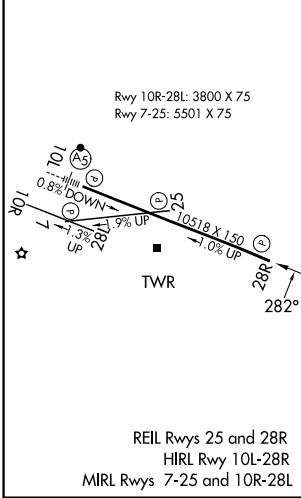
BILLINGS APP CON **120.5 284.6**

BILLINGS TOWER **127.2 257.8**

GND CON **121.9**



ELEV 3662 **D** TDZE 3517



CATEGORY	A	B	C	D
RNP 0.30 DA		3903-1¼	386 (300-1¼)	

AUTHORIZATION REQUIRED

NW-1, 09 JUL 2026 to 06 AUG 2026

NW-1, 09 JUL 2026 to 06 AUG 2026