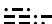
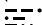


ATIS  
119.4 270.1  
CLNC DEL  
125.675 305.2  
BIRMINGHAM TOWER  
119.9 317.725

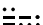
**TOP ALTITUDE:  
4000**


NOTE: RADAR required.  
NOTE: Use frequency depicted within  
sector where FIX/NAVAID  
for your route is located.

ROCKET  
112.2 RGZ   
Chan 59


GADSDEN  
112.3 GAD   
Chan 70

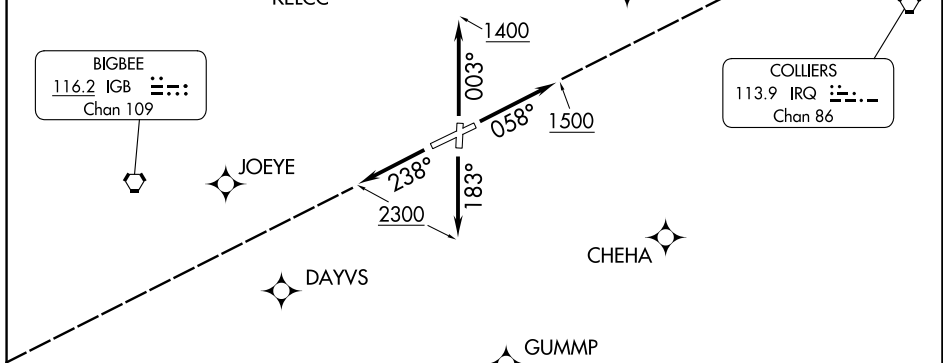
NORTH  
BIRMINGHAM DEP CON  
127.675 338.2

BIGBEE  
116.2 IGB   
Chan 109

COLLIERS  
113.9 IRQ   
Chan 86

SOUTH  
BIRMINGHAM DEP CON  
123.8 256.8

MONTGOMERY  
112.1 MGM   
Chan 58



SE-4, 09 JUL 2026 to 06 AUG 2026

SE-4, 09 JUL 2026 to 06 AUG 2026

**TAKEOFF MINIMUMS**

- Rwy 6: 300-2 with minimum climb of 285' per NM to 1800  
or standard with minimum climb of 435' per NM to 1300.
- Rwy 18: 600-3 with minimum climb of 225' per NM to 1300  
or standard with minimum climb of 455' per NM to 1500.
- Rwy 24: Standard with minimum climb of 280' per NM to 1400.
- Rwy 36: 300-2¼ or standard with minimum climb of 565' per  
NM to 1000.

(CONTINUED ON FOLLOWING PAGE)

NOTE: Chart not to scale.



DEPARTURE ROUTE DESCRIPTION

TAKEOFF RUNWAY 6: Climb on heading 058° to 1500, thence . . . .

TAKEOFF RUNWAY 18: Climb on heading 183° to 2300, thence . . . .

TAKEOFF RUNWAY 24: Climb on heading 238° to 2300, thence . . . .

TAKEOFF RUNWAY 36: Climb on heading 003° to 1400, thence . . . .

. . . . Expect vectors to filed route, maintain 4000 or assigned lower altitude.  
Expect clearance to filed altitude ten minutes after departure.

SE-4, 09 JUL 2026 to 06 AUG 2026

SE-4, 09 JUL 2026 to 06 AUG 2026