

LOC I-BHM <b>110.3</b>	APP CRS <b>058°</b>	Rwy ldg <b>12007</b> TDZE <b>606</b> Apt Elev <b>650</b>
---------------------------	------------------------	--

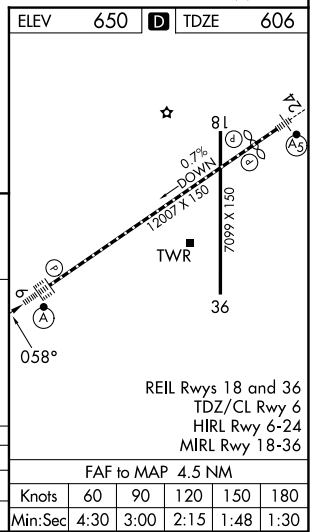
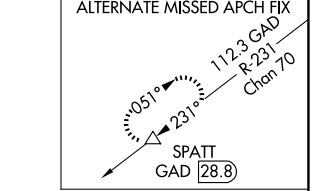
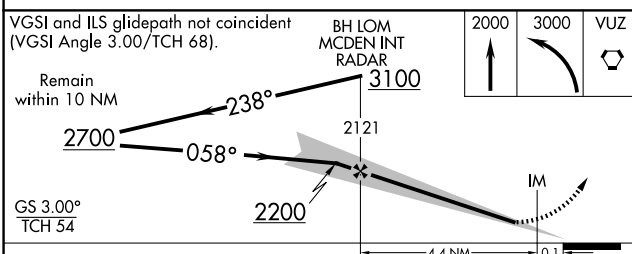
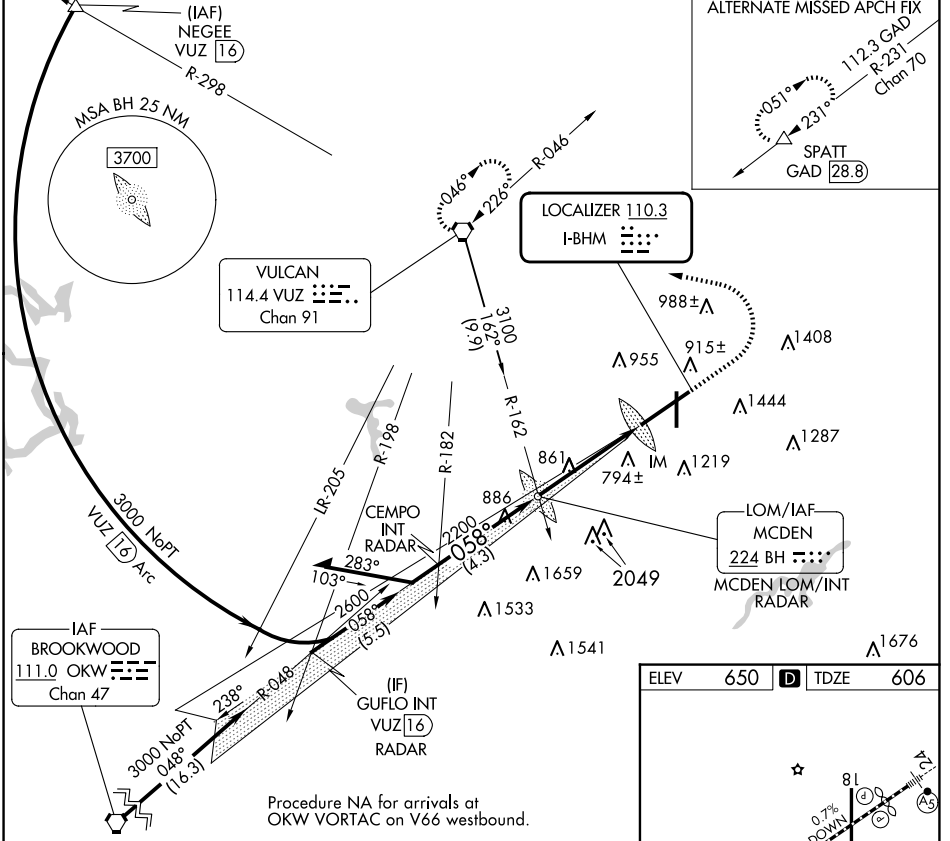
# ILS or LOC RWY 6

BIRMINGHAM-SHUTTLESWORTH INTL (BHM)

RNP APCH-GPS. From OKW VORTAC.  
 For inop ALS, increase S-ILS 6 Cat E visibility to RVR 4000 and S-LOC 6 Cat C, D, E visibility to 1 1/2 SM. Cat E procedure turn NA.

ALSF-2  
 MISSED APPROACH: Climb to 2000 then climbing left turn to 3000 direct VUZ VORTAC and hold.

ATIS <b>119.4 270.1</b>	BIRMINGHAM APP CON <b>123.8 256.8</b>	BIRMINGHAM TOWER <b>119.9 317.725</b>	GND CON <b>121.7 348.6</b>	CLNC DEL <b>125.675 305.2</b>
----------------------------	--	--	-------------------------------	----------------------------------



CATEGORY	A	B	C	D	E
S-ILS 6	806/18		200 (200-1/2)		
S-LOC 6	1160/24	554 (600-1/2)	1160/60	554 (600-1 1/4)	

FAF to MAP 4.5 NM					
Knots	60	90	120	150	180
Min:Sec	4:30	3:00	2:15	1:48	1:30

SE-4, 09 JUL 2026 to 06 AUG 2026

SE-4, 09 JUL 2026 to 06 AUG 2026