

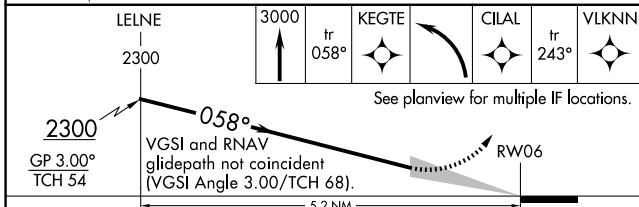
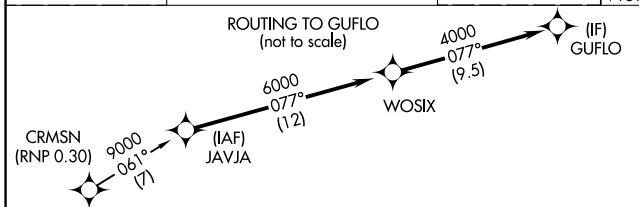
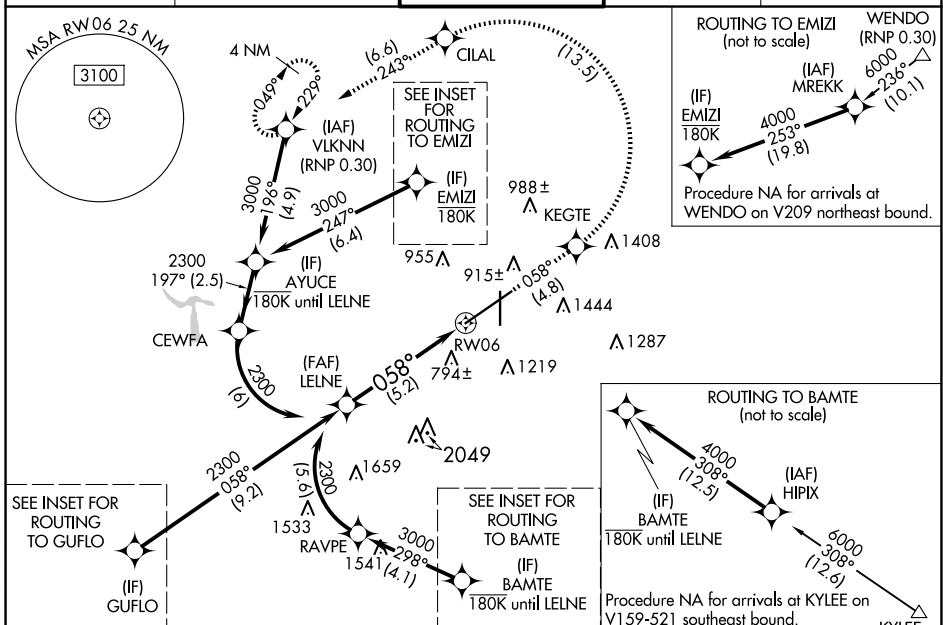
APP CRS **058°**
 Rwy ldg **12007**
 TDZE **606**
 Apt Elev **650**

RNAV (RNP) Z RWY 6

BIRMINGHAM-SHUTTLESWORTH INTL (BHM)

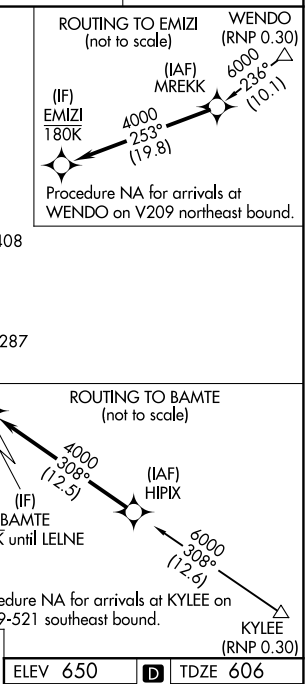
RNP AR APCH. RF required. **ALSF-2**
 For uncompensated Baro-VNAV systems, procedure NA below -8°C or above 54°C.

ATIS 119.4 270.1	BIRMINGHAM APP CON 123.8 256.8	BIRMINGHAM TOWER 119.9 317.725	GND CON 121.7 348.6	CLNC DEL 125.675 305.2
----------------------------	--	--	-------------------------------	----------------------------------

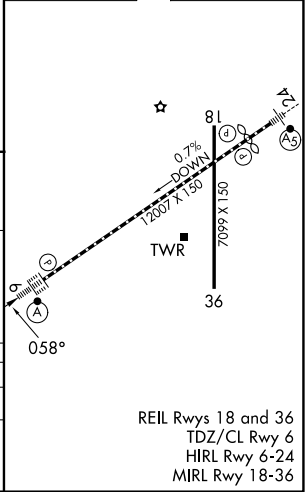


CATEGORY	A	B	C	D
RNP 0.30 DA		1138/55	532 (500-1)	

AUTHORIZATION REQUIRED



ELEV 650 **D** TDZE 606



SE-4, 09 JUL 2026 to 06 AUG 2026

SE-4, 09 JUL 2026 to 06 AUG 2026