

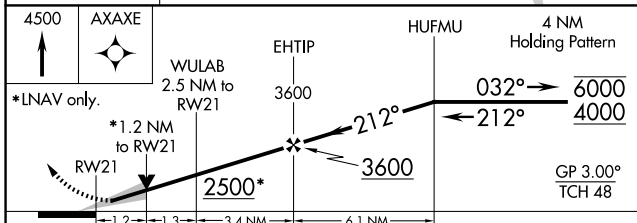
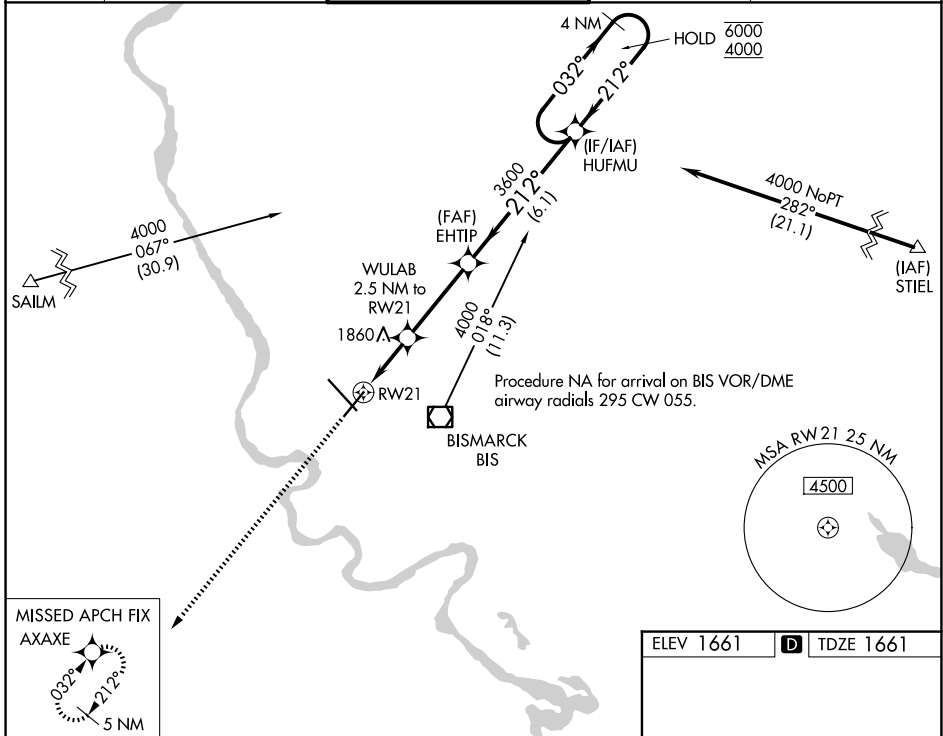
WAAS CH <b>53520</b> <b>W21A</b>	APP CRS <b>212°</b>	Rwy Ldg TDZE Apt Elev	<b>6600</b> <b>1661</b> <b>1661</b>
--	------------------------	-----------------------------	---

# RNAV (GPS) RWY 21

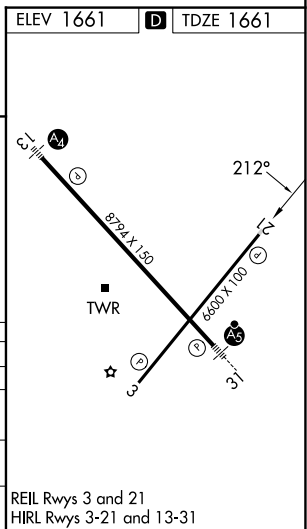
BISMARCK MUNI (BIS)

RNP APCH.		MISSED APPROACH: Climb to 4500 direct AXAXE and hold.	
ASR		For uncompensated Baro-VNAV systems, LNAV/VNAV NA below -22°C or above 54°C.	

ATIS <b>119.35</b>	BISMARCK APP CON ★ <b>126.3 298.9</b>	BISMARCK TOWER★ <b>118.3</b> (CTAF) <b>0 257.8</b>	GND CON <b>121.9</b>	UNICOM <b>122.95</b>
-----------------------	--	---	-------------------------	-------------------------



CATEGORY	A	B	C	D
LPV DA		1861- <sup>3</sup> / <sub>4</sub>	200 (200- <sup>3</sup> / <sub>4</sub> )	
LNAV/VNAV DA		1970- <sup>7</sup> / <sub>8</sub>	309 (400- <sup>7</sup> / <sub>8</sub> )	
LNAV MDA	2100-1	439 (500-1)	2100-1 <sup>1</sup> / <sub>4</sub>	439 (500-1 <sup>1</sup> / <sub>4</sub> )
CIRCLING	2200-1	539 (600-1)	2460-2 <sup>1</sup> / <sub>4</sub> 799 (800-2 <sup>1</sup> / <sub>4</sub> )	2460-2 <sup>1</sup> / <sub>2</sub> 799 (800-2 <sup>1</sup> / <sub>2</sub> )



NC-1, 09 JUL 2026 to 06 AUG 2026

NC-1, 09 JUL 2026 to 06 AUG 2026