

(BRUWN7.BRUWN) 23334

GENERAL EDWARD LAWRENCE LOGAN INTL (BOS)

BRUWN SEVEN DEPARTURE (RNAV) AL-58 (FAA)

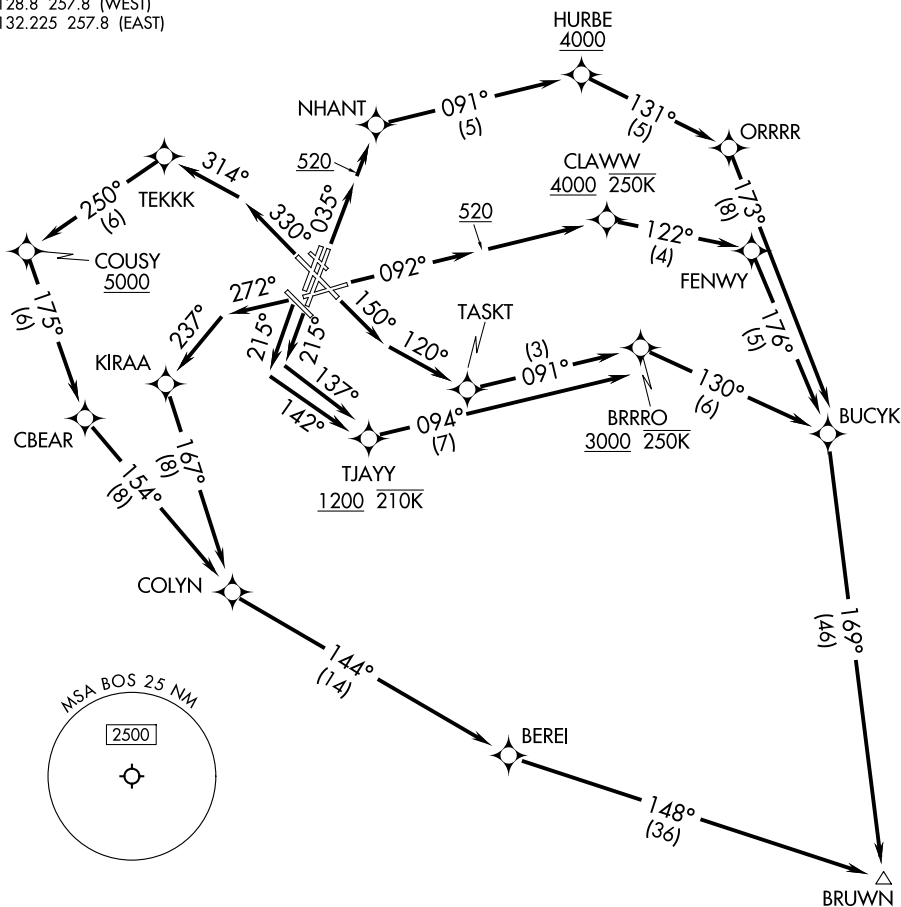
BOSTON, MASSACHUSETTS

BOSTON DEP CON
 133.0
 D-ATIS 135.0
 CLNC DEL 121.65 257.8
 CPDLC
 GND CON 121.75 121.9
 BOSTON TOWER
 128.8 257.8 (WEST)
 132.225 257.8 (EAST)

RNAV 1-DME/DME/IRU or GPS.

RADAR required for non-GPS equipped aircraft.

**TOP ALTITUDE:
5000**



NE-1, 09 JUL 2026 to 06 AUG 2026

NE-1, 09 JUL 2026 to 06 AUG 2026

NOTE: Jet aircraft only.

TAKEOFF MINIMUMS:

- Rwy 4L, 14, 15L, 32, 33R: NA-ATC.
- Rwy 4R, 9, 15R, 22R, 33L: Standard with minimum climb of 500'/NM to 520.
- Rwy 22L: 300-1 with minimum climb of 500'/NM to 520, or standard with minimum climb of 500'/NM to 520 if tower reports no tall vessels in the departure area.
- Rwy 27: Standard with minimum climb of 500'/NM to 1300.

(NARRATIVE ON FOLLOWING PAGE)

NANTUCKET
 ACK

NOTE: Chart not to scale.

BRUWN SEVEN DEPARTURE (RNAV)

BOSTON, MASSACHUSETTS

(BRUWN7.BRUWN) 30NOV23

GENERAL EDWARD LAWRENCE LOGAN INTL (BOS)



DEPARTURE ROUTE DESCRIPTION

TAKEOFF RUNWAY 4R: Climb on heading 035° to 520, then direct NHANT, then on track 091° to cross HURBE at or above 4000, thence....

TAKEOFF RUNWAY 9: Climb on heading 092° to 520, then direct to cross CLAWW at or above 4000 and at or below 250K, thence....

TAKEOFF RUNWAY 15R: Climb on heading 150° to intercept course 120° to TASKT, do not exceed 210K until 520' MSL, thence....

TAKEOFF RUNWAY 22L: Climb on heading 215° to intercept course 137° to cross TJAYY at or above 1200 and at or below 210K, thence....

TAKEOFF RUNWAY 22R: Climb on heading 215° to intercept course 142° to cross TJAYY at or above 1200 and at or below 210K, thence....

TAKEOFF RUNWAY 27: Climb on heading 272° to intercept course 237° to KIRAA, thence....

TAKEOFF RUNWAY 33L: Climb on heading 330° to intercept course 314° to TEKKE, thence....

...on depicted route to BRUWN. Maintain 5000. Expect clearance to filed altitude/flight level within 10 minutes after departure.

NE-1, 09 JUL 2026 to 06 AUG 2026

NE-1, 09 JUL 2026 to 06 AUG 2026