

**HYLND SEVEN DEPARTURE (RNAV)**

AL-58 (FAA)

BOSTON, MASSACHUSETTS

BOSTON DEP CON

133.0

D-ATIS 135.0

CLNC DEL

121.65 257.8

CPDLC

GND CON

121.75 121.9

BOSTON TOWER

128.8 257.8 (WEST)

132.225 257.8 (EAST)

RNAV 1 - DME/DME/IRU or GPS.

**TOP ALTITUDE:**

**5000**

RADAR required for non-GPS equipped aircraft.

**TAKEOFF MINIMUMS:**

Rwys 4L, 14, 15L, 32, 33R: NA-ATC.

Rwys 4R, 9, 15R, 22R, 33L: Standard with minimum climb of 500'/NM to 520.

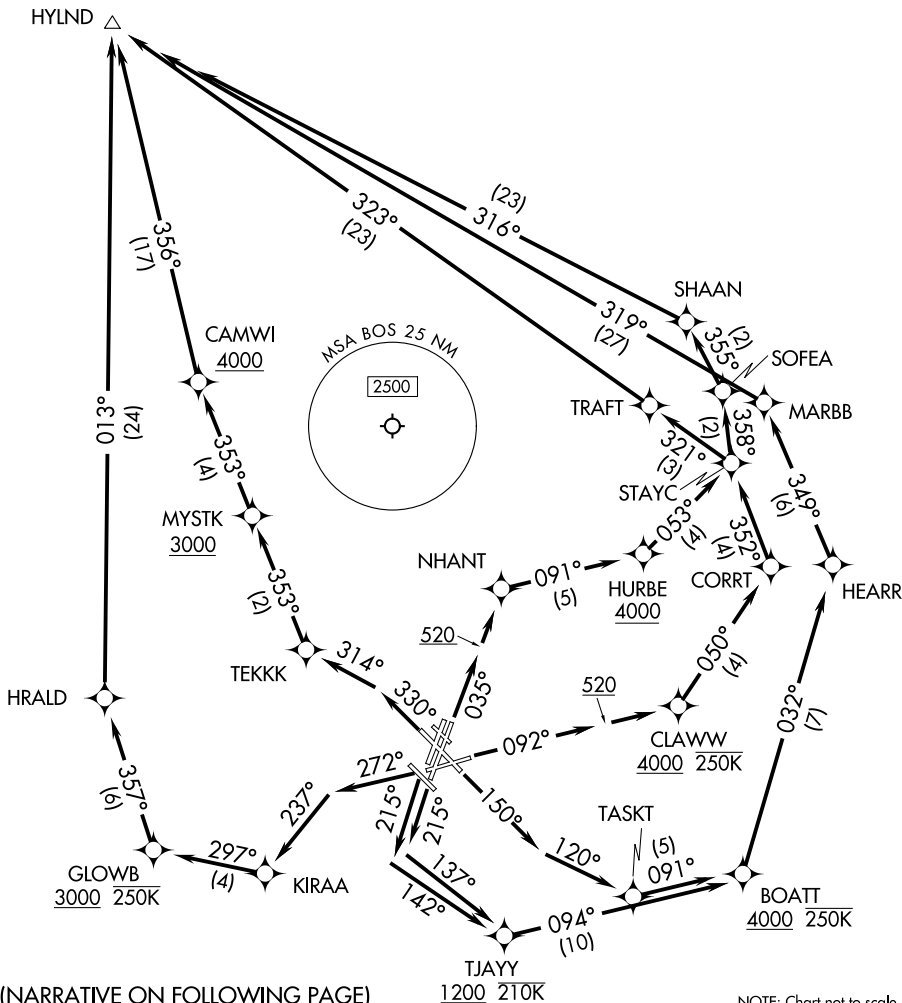
Rwy 22L: 300-1 with minimum climb of 500'/NM to 520, or standard with minimum climb of 500'/NM to 520 if tower reports no tall vessels in the departure area.

Rwy 27: Standard with minimum climb of 500'/NM to 1300.

NOTE: Jet aircraft only.

△ MANCH

HYLND △



(NARRATIVE ON FOLLOWING PAGE)

NOTE: Chart not to scale.

**HYLND SEVEN DEPARTURE (RNAV)**

BOSTON, MASSACHUSETTS

NE-1, 09 JUL 2026 to 06 AUG 2026

NE-1, 09 JUL 2026 to 06 AUG 2026



DEPARTURE ROUTE DESCRIPTION

TAKEOFF RUNWAY 4R: Climb on heading 035° to 520, then direct NHANT, then on track 091° to cross HURBE at or above 4000, thence....

TAKEOFF RUNWAY 9: Climb on heading 092° to 520, then direct CLAWW at or above 4000 and at or below 250K, thence....

TAKEOFF RUNWAY 15R: Climb on heading 150° to intercept course 120° to TASKT, do not exceed 210K until 520, thence....

TAKEOFF RUNWAY 22L: Climb on heading 215° to intercept course 137° to cross TJAYY at or above 1200 and at or below 210K, thence....

TAKEOFF RUNWAY 22R: Climb on heading 215° to intercept course 142° to cross TJAYY at or above 1200 and at or below 210K, thence....

TAKEOFF RUNWAY 27: Climb on heading 272° to intercept course 237° to KIRAA, thence....

TAKEOFF RUNWAY 33L: Climb on heading 330° to intercept course 314° to TEKKE, then on track 353° to cross MYSTK at or above 3000, thence....

...on depicted route to HYLND. Maintain 5000. Expect filed altitude 10 minutes after departure.

NE-1, 09 JUL 2026 to 06 AUG 2026

NE-1, 09 JUL 2026 to 06 AUG 2026