

| | | |
|---|------------------------|---|
| LOC/DME I-BOS 110.3 Chan 40 | APP CRS 035° | Rwy Ldg 8851 TDZE 18 Apt Elev 19 |
|---|------------------------|---|

ILS RWY 4R (SA CAT I)

GENERAL EDWARD LAWRENCE LOGAN INTL (BOS)

RNP APCH - GPS. From GOSHI.
DME required.

When control tower reports tall vessels in approach area, procedure NA. Requires specific OPSPEC, MSPEC, or LOA approval. Simultaneous approach authorized. Simultaneous operations require use of vertical guidance; maintain last assigned altitude until established on glideslope. Use of FD or AP required during simultaneous operations.

ALSF-2



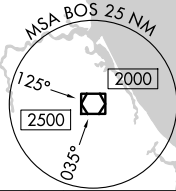
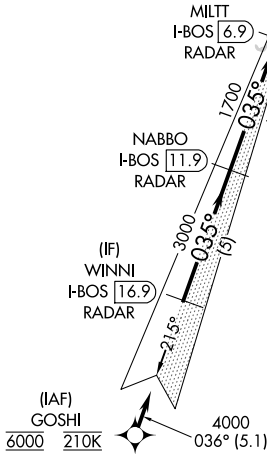
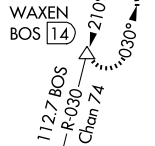
MISSED APPROACH: Climb to 3000 on BOS VOR/DME R-030 to WAXEN/BOS 14 DME and hold.

| | | | |
|------------------------|--------------------------------------|--|--------------------------------|
| D-ATIS 135.0 | BOSTON APP CON 120.6 263.1 | BOSTON TOWER 128.8 257.8 (WEST) 132.225 257.8 (EAST) | GND CON 121.75 121.9 |
|------------------------|--------------------------------------|--|--------------------------------|

LOCALIZER 110.3
I-BOS [---]---
Chan 40

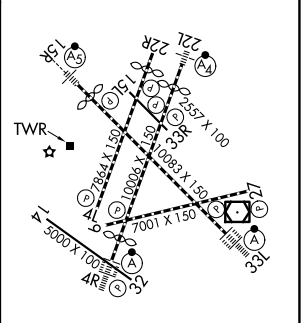
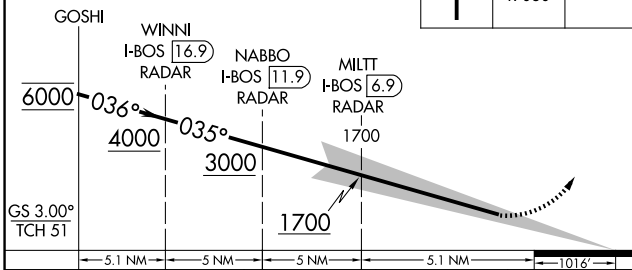
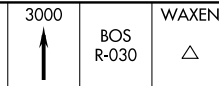
BOSTON
112.7 BOS [---]---
Chan 74

MISSED APCH FIX



| | |
|---------|---------|
| ELEV 19 | TDZE 18 |
|---------|---------|

VGSI and ILS glidepath not coincident (VGSI Angle 3.00/TCH 67).



| | | | | |
|----------|-----------|---|------------|---|
| CATEGORY | A | B | C | D |
| S-ILS 4R | RA 168/14 | | 150 DA 168 | |

SA CATEGORY I ILS - SPECIAL AIRCREW & AIRCRAFT CERTIFICATION REQUIRED

TDZL/RCLS Rwy 4R, 15R and 33L
REIL Rwy 4L, 27 and 32
MIRL Rwy 15L-33R
HIRL Rwy 4L-22R, 4R-22L, 9-27, 14-32 and 15R-33L

NE-1, 09 JUL 2026 to 06 AUG 2026

NE-1, 09 JUL 2026 to 06 AUG 2026