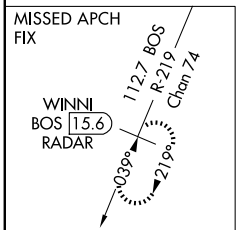
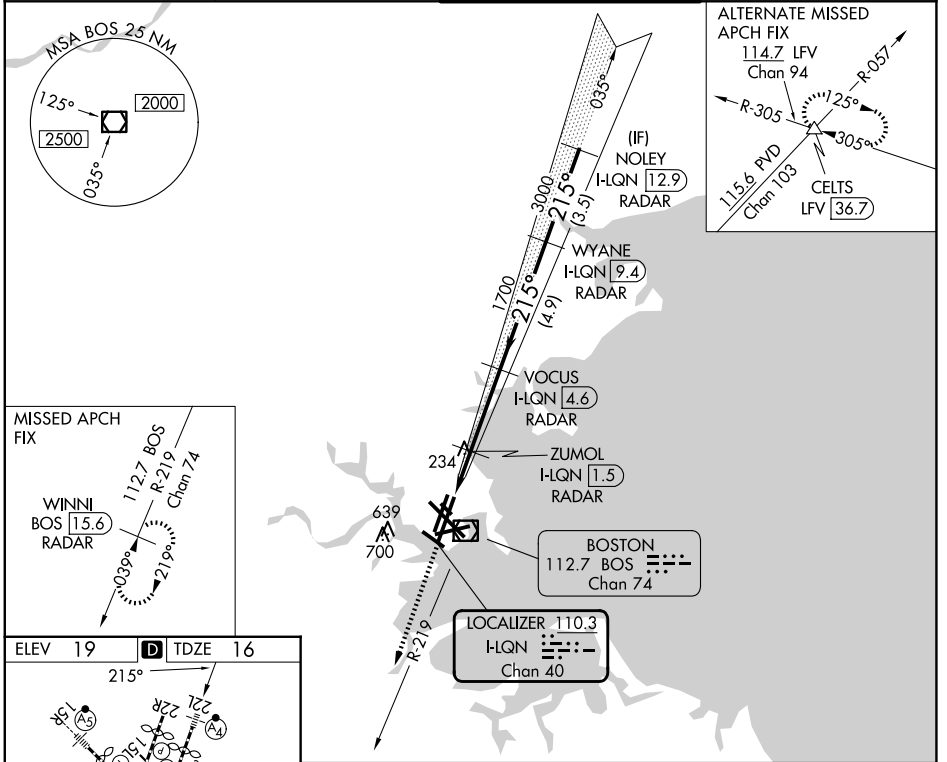


LOC/DME I-LQN 110.3 Chan 40	APP CRS 215°	Rwy Ldg 8806 TDZE 16 Apt Elev 19
---	------------------------	---

ILS or LOC RWY 22L

GENERAL EDWARD LAWRENCE LOGAN INTL (BOS)

RADAR required for procedure entry. DME or RADAR required. Inop table does not apply to S-ILS 22L.		MALSF 	MISSED APPROACH: Climb to 3000 on BOS VOR/DME R-219 to WINNI/BOS 15.6 DME/RADAR and hold.
D-ATIS 135.0	BOSTON APP CON 120.6 263.1	BOSTON TOWER 128.8 257.8 (WEST) 132.225 257.8 (EAST)	GND CON 121.75 121.9



ELEV 19	D	TDZE 16
215° 		
TDZL/RCLS Rws 4R, 15R and 33L REIL Rws 4L, 27 and 32 MRL Rwy 15L-33R HIRL Rws 4L-22R, 4R-22L, 9-27, 14-32 and 15R-33L FAF to MAP 5.1 NM Knots 60 90 120 150 180 Min:Sec 5:06 3:24 2:33 2:02 1:42		

3000	WINNI BOS 15.6	VGSi and ILS glidepath not coincident (VGSi Angle 3.00/TCH 71).		WYANE I-LQN 9.4 RADAR	NOLEY I-LQN 12.9 RADAR
BOS R-219	ZUMOL I-LQN 1.5 RADAR	VOCUS I-LQN 4.6 RADAR	1700	215°	4000
I-LQN DME ANT.	I-LQN 0.9	1700	3000		GS 3.00° TCH 55
-1.4 NM		0.6	-3.1 NM	4.9 NM	-3.5 NM
CATEGORY	A	B	C	D	
S-ILS 22L	216/40 200 (200-¾)				
S-LOC 22L	540/40	524 (600-¾)	540-1¼	524 (600-1¼)	

NE-1, 09 JUL 2026 to 06 AUG 2026

NE-1, 09 JUL 2026 to 06 AUG 2026