

LOC/DME I-DGU <b>111.3</b> Chan <b>50</b>	APP CRS <b>272°</b>	Rwy Ldg <b>7001</b> TDZE <b>17</b> Apt Elev <b>19</b>
---	------------------------	---

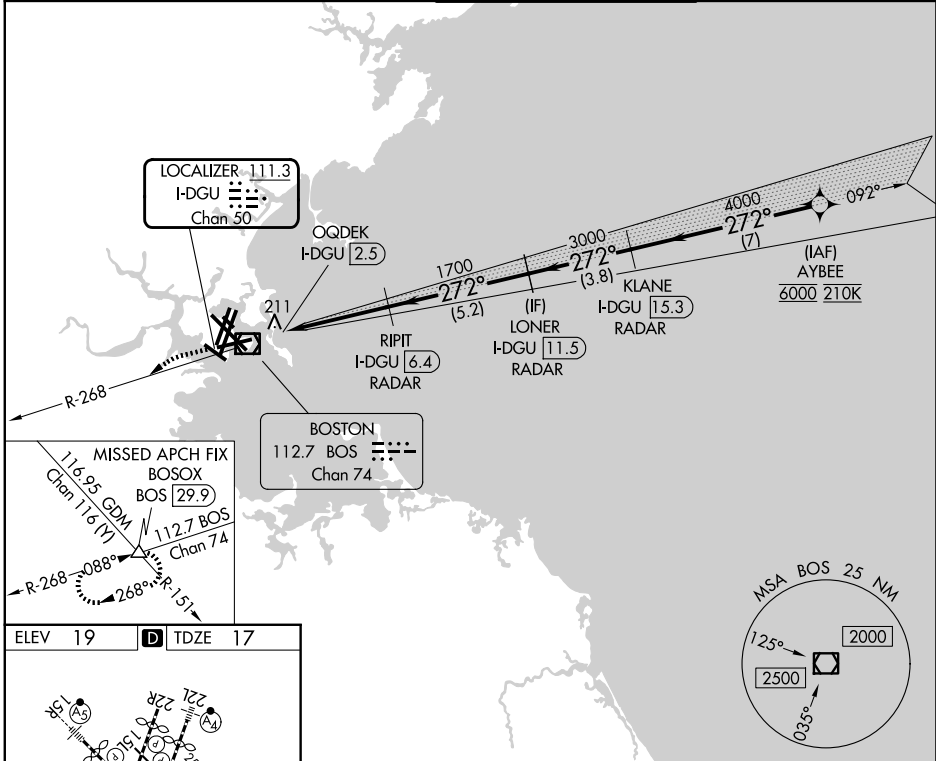
# ILS or LOC RWY 27

GENERAL EDWARD LAWRENCE LOGAN INTL (BOS)

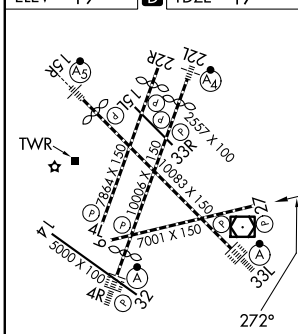
RNP APCH - GPS. From AYBEE.  
RADAR required for procedure entry. DME or RADAR required.

MISSED APPROACH: Climb to 3000 on BOS VOR/DME R-268 to BOSOX INT/BOS 29.9 DME and hold.

D-ATIS <b>135.0</b>	BOSTON APP CON <b>120.6 263.1</b>	BOSTON TOWER <b>128.8 257.8 (WEST)</b> <b>132.225 257.8 (EAST)</b>	GND CON <b>121.75 121.9</b>
------------------------	--------------------------------------	--	--------------------------------



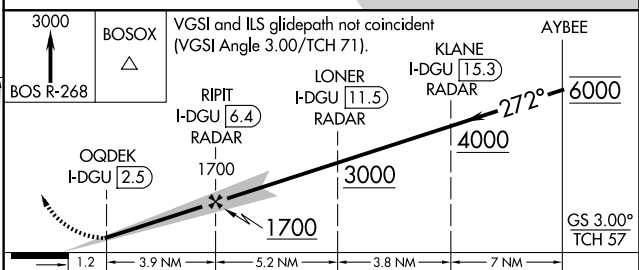
ELEV 19	<b>D</b>	TDZE 17
---------	----------	---------



TDZL/RCLS Rwy 4R, 15R and 33L  
REIL Rwy 4L, 27 and 32  
MIRL Rwy 15L-33R  
HIRL Rwy 4L-22R, 4R-22L, 9-27, 14-32 and 15R-33L

FAF to MAP 3.9 NM

Knots	60	90	120	150	180
Min:Sec	3:48	2:32	1:54	1:31	1:16



CATEGORY	A	B	C	D
S-ILS 27		460-1½	443 (500-1½)	
S-LOC 27		460-1½	443 (500-1½)	

NE-1, 09 JUL 2026 to 06 AUG 2026

NE-1, 09 JUL 2026 to 06 AUG 2026