

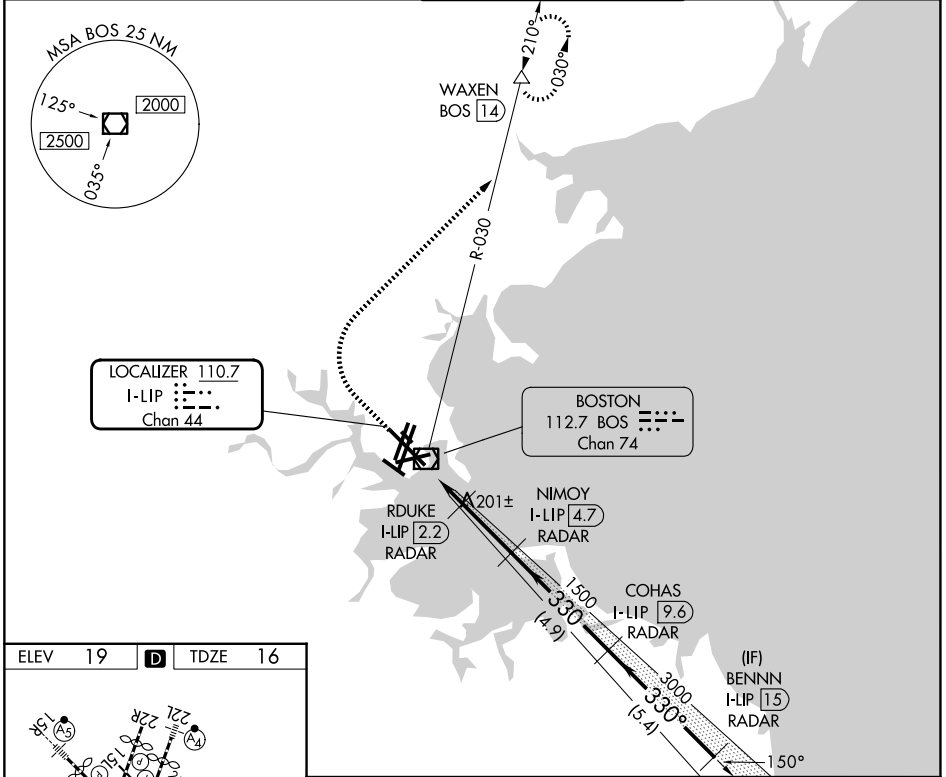
LOC/DME I-LIP 110.7 Chan 44	APP CRS 330°	Rwy Ldg 10083 TDZE 16 Apt Elev 19
---	------------------------	--

ILS or LOC RWY 33L

GENERAL EDWARD LAWRENCE LOGAN INTL (BOS)

RADAR required for procedure entry. DME required.		ALSIF-2 	MISSED APPROACH: Climb to 1500 then climbing right turn to 3000 on BOS VOR/DME R-030 to WAXEN/BOS 14 DME and hold.
---	--	-------------	--

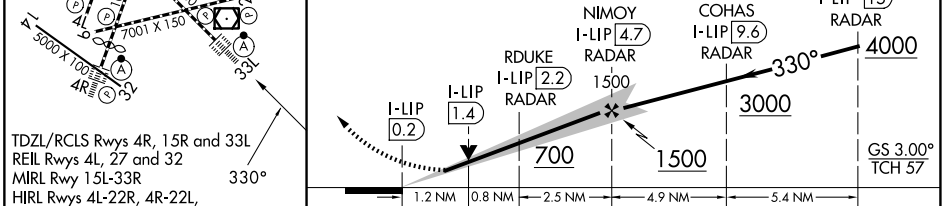
D-ATIS 135.0	BOSTON APP CON 120.6 263.1	BOSTON TOWER 128.8 257.8 (WEST) 132.225 257.8 (EAST)	GND CON 121.75 121.9
------------------------	--------------------------------------	--	--------------------------------



ELEV 19	D	TDZE 16
---------	----------	---------

330°

1500	3000	WAXEN △	VGSI and ILS glidepath not coincident (VGSI Angle 3.00°/TCH 68).
↑		BOS R-030	



FAF to MAP 4.5 NM					
Knots	60	90	120	150	180
Min:Sec	4:30	3:00	2:15	1:48	1:30
CATEGORY	A		B		C
S-ILS 33L	216/18 200 (200-½)				
S-LOC 33L	460/24 444 (500-½)		460/45 444 (500-¾)		

NE-1, 09 JUL 2026 to 06 AUG 2026

NE-1, 09 JUL 2026 to 06 AUG 2026