

LOC/DME I-BOS 110.3 Chan 40	APP CRS 035°	Rwy Ldg 8851 TDZE 18 Apt Elev 19
---	------------------------	---

ILS or LOC RWY 4R

GENERAL EDWARD LAWRENCE LOGAN INTL (BOS)

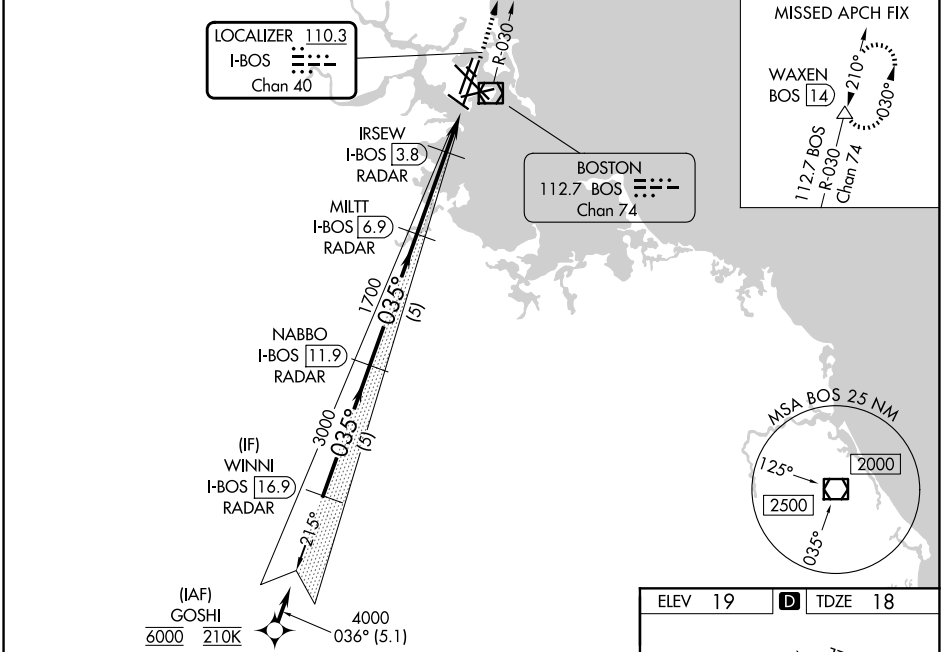
RNP APCH - GPS. From GOSHI.
DME required.



MISSED APPROACH:
Climb to 3000 on BOS VOR/DME R-030 to WAXEN/BOS 14 DME and hold.

Simultaneous approach authorized. Simultaneous operations require use of vertical guidance; maintain last assigned altitude until established on glideslope. Use of FD or AP required during simultaneous operations. LOC procedure NA during simultaneous operations. * For inop ALS increase S-LOC 4R Cat A/B visibility to RVR 5500. # When vessels taller than 144 feet present, S-ILS 4R NA.

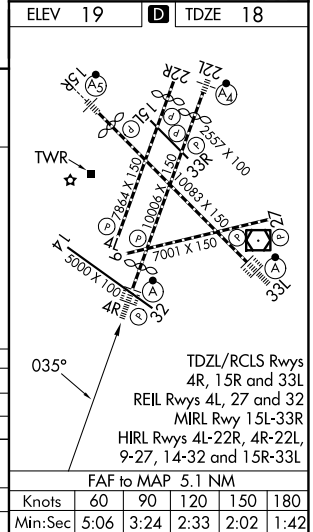
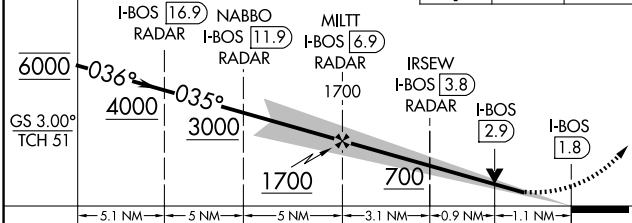
D-ATIS 135.0	BOSTON APP CON 120.6 263.1	BOSTON TOWER 128.8 257.8 (WEST) 132.225 257.8 (EAST)	GND CON 121.75 121.9
------------------------	--------------------------------------	--	--------------------------------



NE-1, 09 JUL 2026 to 06 AUG 2026

NE-1, 09 JUL 2026 to 06 AUG 2026

VGSI and ILS glidepath not coincident (VGSI Angle 3.00/TCH 67).
 3000 BOS WAXEN
 R-030 △



CATEGORY	A	B	C	D
S-ILS 4R		218/18	200 (200-½)	
S-LOC 4R	440/24	422 (500-½)	440/40	422 (500-¾)
# APPROACH MINIMA WHEN CONTROL TOWER REPORTS TALL VESSELS IN APPROACH AREA				
S-ILS 4R		374/40	356 (400-¾)	
S-LOC 4R*		440/40	422 (500-¾)	

ELEV	19	TDZE	18
FAF to MAP 5.1 NM			
Knots	60	90	120 150 180
Min:Sec	5:06	3:24	2:33 2:02 1:42