

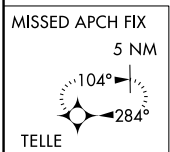
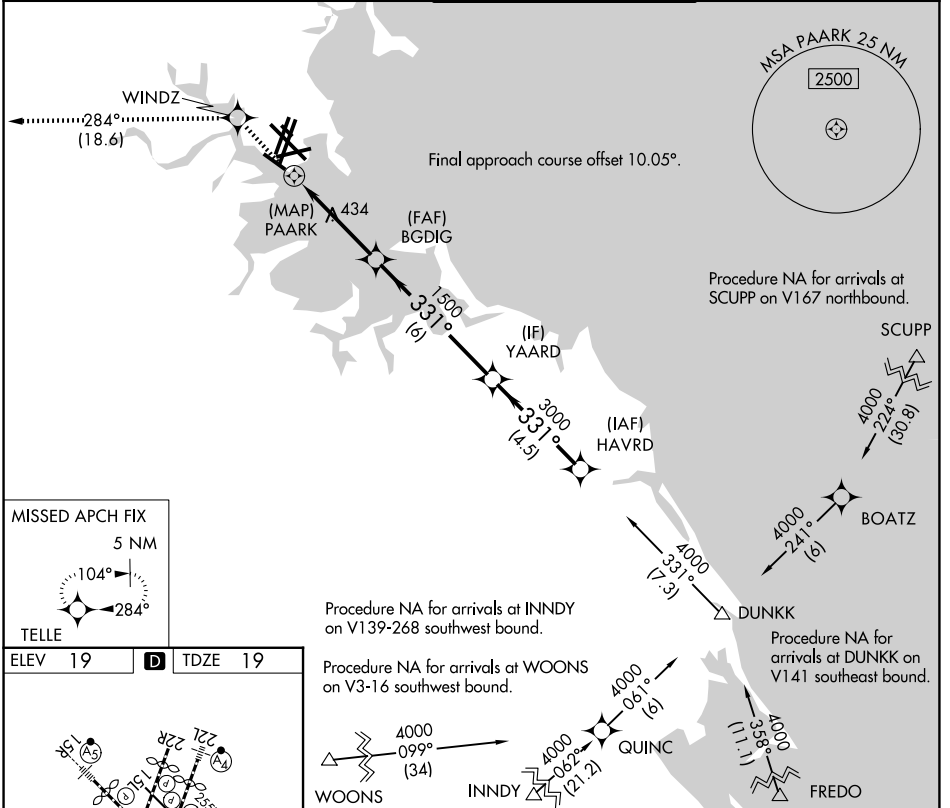
APP CRS	Rwy Ldg	5000
331°	TDZE	19
	Apt Elev	19

RNAV (GPS) RWY 32

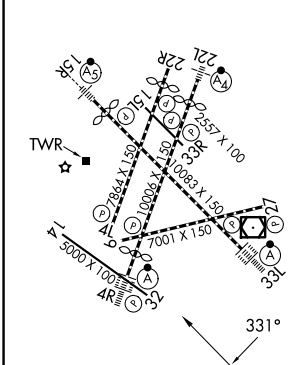
GENERAL EDWARD LAWRENCE LOGAN INTL (BOS)

RNP APCH - GPS.		MISSED APPROACH: Climb to 3000 direct WINDZ and on track 284° to TELLE and hold.	
-----------------	--	--	--

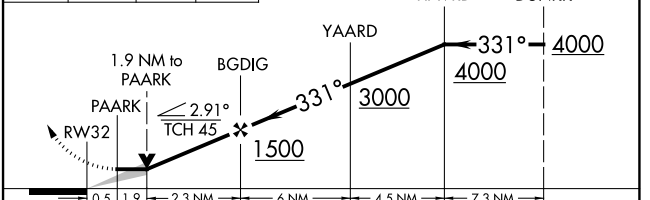
D-ATIS 135.0	BOSTON APP CON 120.6 263.1	BOSTON TOWER 128.8 257.8 (WEST) 132.225 257.8 (EAST)	GND CON 121.75 121.9
------------------------	--------------------------------------	--	--------------------------------



ELEV 19	D	TDZE 19
---------	----------	---------



3000	WINDZ	TELLE
↑	tr 284°	☆



CATEGORY	A	B	C	D
LNAV MDA	820-1 801 (900-1)	820-1¼ 801 (900-1¼)	820-2½	801 (900-2½)

NE-1, 09 JUL 2026 to 06 AUG 2026

NE-1, 09 JUL 2026 to 06 AUG 2026