

WAAS CH 77738 W04B	APP CRS 037°	Rwy Ldg 7864 TDZE 14 Apt Elev 19
--	------------------------	---

RNAV (GPS) RWY 4L

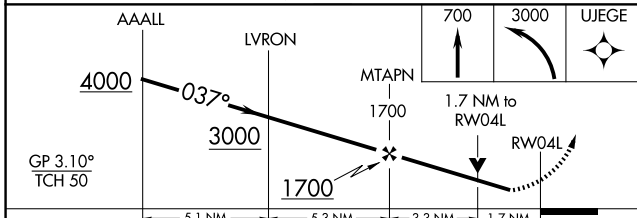
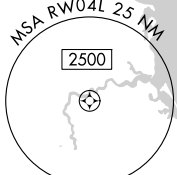
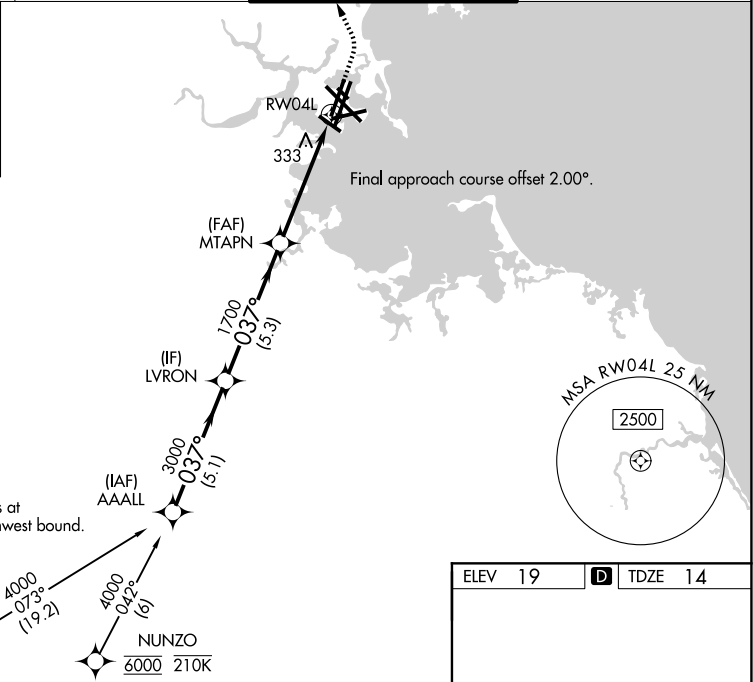
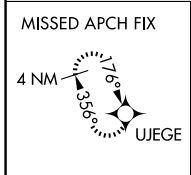
GENERAL EDWARD LAWRENCE LOGAN INTL (BOS)

RNP APCH - GPS.

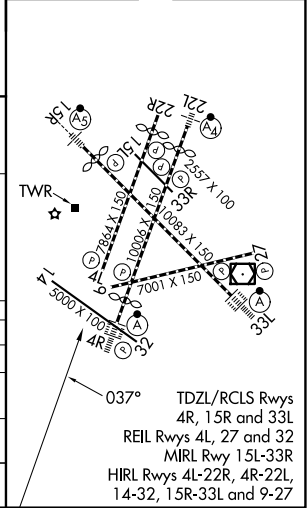
▼ For uncompensated Baro-VNAV systems, LNAV/VNAV NA below -14°C or above 54°C. Use of FD or AP required during simultaneous operations. Simultaneous operations require use of vertical guidance; maintain last assigned altitude until established on glidepath. LNAV procedure NA during simultaneous operations. Rwy 4L helicopter visibility reduction below RVR 4000 NA. When control tower reports tall vessels in approach area: increase LPV DA to 369 and all Cats visibility to RVR 5500. LPV and LNAV/VNAV NA when vessels taller than 137 feet present.

MISSED APPROACH: Climb to 700 then CLIMB left turn to 3000 direct UJEGE and hold, continue climb-in-hold to 3000.
* Missed approach requires minimum climb of 425 feet per NM to 900.

D-ATIS 135.0	BOSTON APP CON 120.6 263.1	BOSTON TOWER 128.8 257.8 (WEST) 132.225 257.8 (EAST)	GND CON 121.75 121.9
------------------------	--------------------------------------	--	--------------------------------



ELEV 19	D TDZE 14
---------	------------------



CATEGORY	A	B	C	D
LPV DA		318/45	304 (300-7/8)	
LNAV/VNAV DA		768-2	754 (800-2)	
LNAV/VNAV DA *		680-1 7/8	666 (700-1 7/8)	
LNAV MDA	600/55	586 (600-1)	600-1 3/4	586 (600-1 3/4)

NE-1, 09 JUL 2026 to 06 AUG 2026

NE-1, 09 JUL 2026 to 06 AUG 2026