

WAAS CH 50124 W04A	APP CRS 035°	Rwy Ldg 8851 TDZE 18 Apt Elev 19
----------------------------------------	------------------------	-------------------------------------------------------------

RNAV (GPS) RWY 4R

GENERAL EDWARD LAWRENCE LOGAN INTL (BOS)

RNP APCH - GPS.

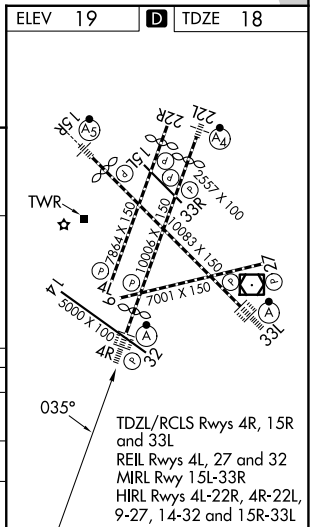
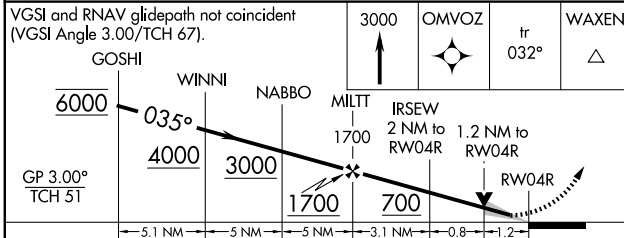
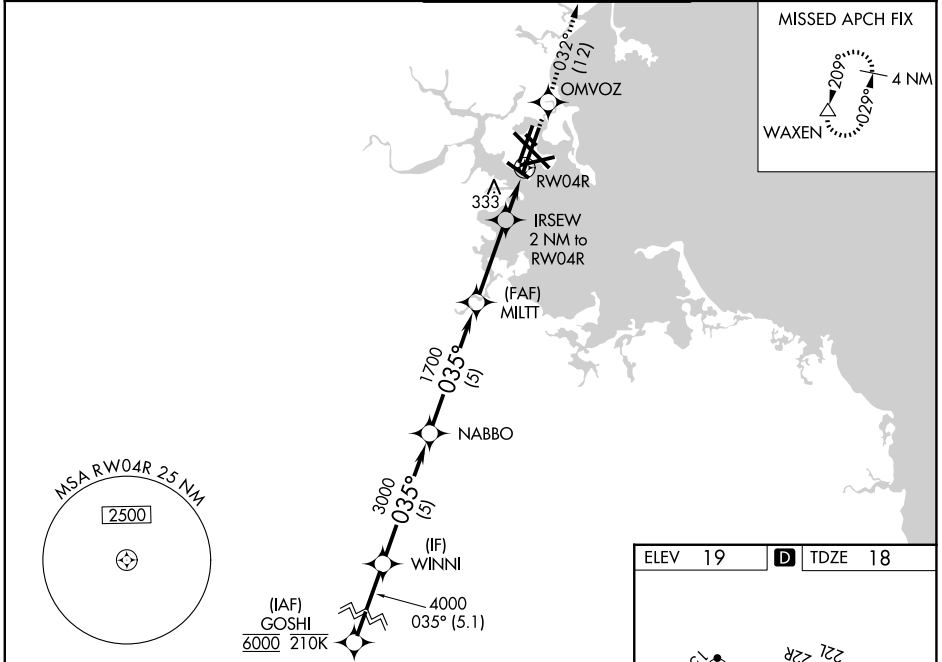
▼ For uncompensated Baro-VNAV systems, LNAV/VNAV NA below -16°C or above 54°C. For inop ALS increase LNAV/VNAV all Cats visibility to 1½ SM. When control tower reports tall vessels in approach area: increase LPV DA to 374 and all Cats visibility to RVR 4000, increase LNAV Cat A/B visibility to RVR 4000, for inop ALS with tall vessels increase LNAV/VNAV all Cats visibility to 1½ SM, LNAV Cat A/B visibility to RVR 5500 and LNAV Cat C/D to 1½ SM. For tall vessels Rwy 4R helicopter visibility reduction below RVR 4000 NA. When vessels taller than 144 feet present, LPV and LNAV/VNAV NA.

ALSF-2



MISSED APPROACH:
Climb to 3000 direct
OMVOZ and on track
032° to WAXEN and
hold.

D-ATIS 135.0	BOSTON APP CON 120.6 263.1	BOSTON TOWER 128.8 257.8 (WEST) 132.225 257.8 (EAST)	GND CON 121.75 121.9
------------------------	--------------------------------------	--------------------------------------------------------------------------	--------------------------------



CATEGORY	A	B	C	D
LPV DA		218/18	200 (200-½)	
LNAV/VNAV DA		514/50	496 (500-1)	
LNAV MDA	480/24	462 (500-½)	480/50	462 (500-1)