

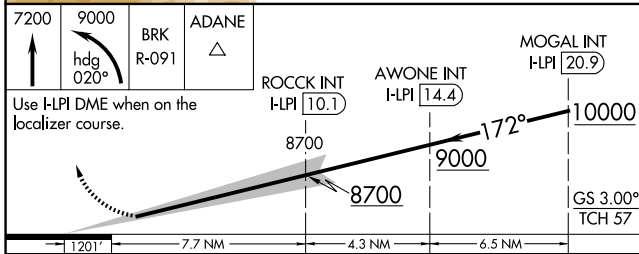
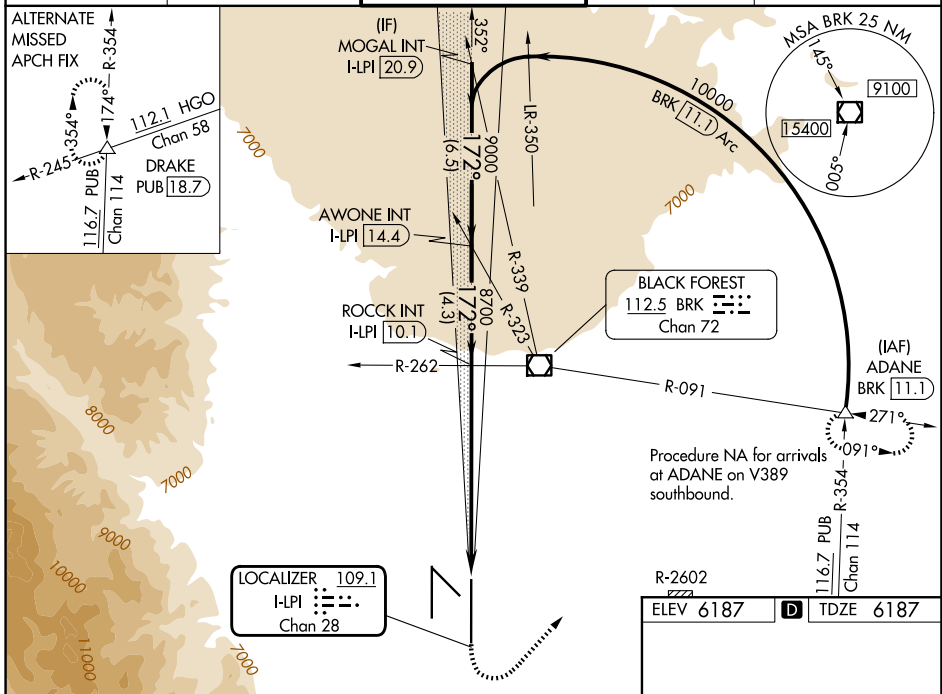
| | | |
|--|------------------------|--|
| LOC/DME I-LPI 109.1 Chan 28 | APP CRS 172° | Rwy Ldg 13500 TDZE 6187 Apt Elev 6187 |
|--|------------------------|--|

ILS RWY 17L (SA CAT I & II)

CITY OF COLORADO SPRINGS MUNI (COS)

| | | |
|--|-----------|---|
| DME or RADAR required for procedure entry. | MALSR | MISSED APPROACH: Climb to 7200 then climbing left turn to 9000 on heading 020° and on BRK VOR/DME R-091 to ADANE INT/BRK VOR/DME 11.1 DME and hold. |
| <p>⚠ Simultaneous approach authorized with Rwy 17R.</p> <p>⚠ SA CAT I: Required specific OPSPEC, MSPEC, or LOA approval and use of HUD to DH. SA CAT II: Reduced Lighting: Requires specific OPSPEC, MSPEC, or LOA approval and use of autoland or HUD to touchdown.</p> | | |

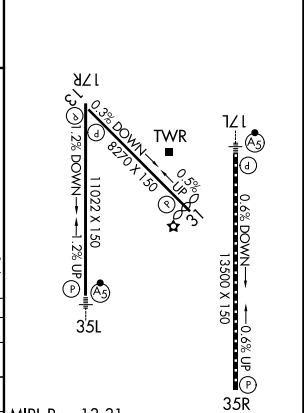
| | | | | |
|----------------------------|---|-------------------------------------|-------------------------------|-----------------------------------|
| ATIS 125.0 254.3 | SPRINGS APP CON 124.0 257.875 | SPRINGS TOWER 119.9 360.6 | GND CON 121.7 348.6 | CLNC DEL 134.45 363.125 |
|----------------------------|---|-------------------------------------|-------------------------------|-----------------------------------|



| | | | | |
|-----------|---------------------------------|---|---|---|
| CATEGORY | A | B | C | D |
| S-ILS 17L | SA CAT I RA 169/14 150 DA 6337 | | | |
| S-ILS 17L | SA CAT II RA 105/16 100 DA 6287 | | | |

SA CATEGORY I & II ILS SPECIAL AIRCREW & AIRCRAFT CERTIFICATION REQUIRED

| | |
|---------------------|--------------------|
| R-2602 ELEV 6187 | D TDZE 6187 |
|---------------------|--------------------|



MIRL Rwy 13-31
HIRL Rwys 17R-35L and 17L-35R
REIL Rwys 13, 17R, 31 and 35R
TDZ/CL Rwys 17L and 35R

SW-1, 09 JUL 2026 to 06 AUG 2026

SW-1, 09 JUL 2026 to 06 AUG 2026