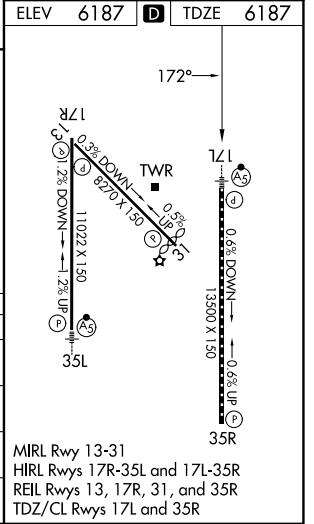
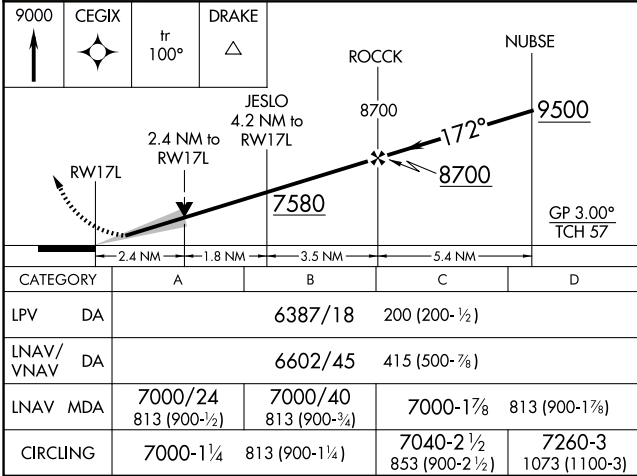
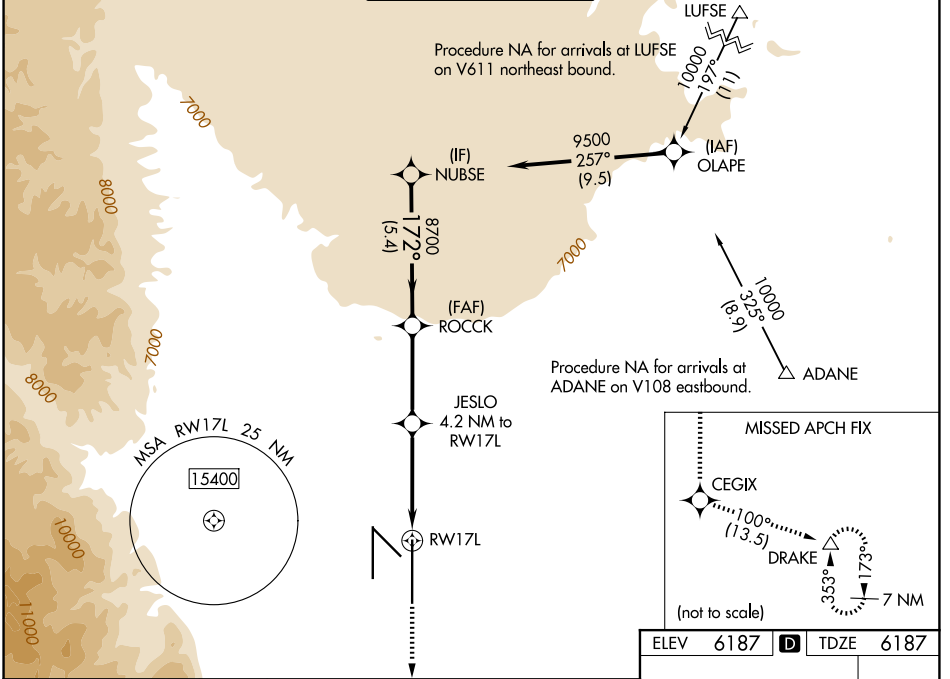


WAAS CH 69618 W17A	APP CRS 172°	Rwy Ldg TDZE 6187 Apt Elev 6187	13500
--	------------------------	---	--------------

RNAV (GPS) Y RWY 17L

CITY OF COLORADO SPRINGS MUNI (COS)

RNP APCH - GPS.		SPRINGS TOWER 119.9 360.6		GND CON 121.7 348.6	CLNC DEL 134.45 363.125
⚠ For uncompensated Baro-VNAV systems, LNAV/VNAV NA below -21°C or above 44°C. For inop MALSRL, increase LNAV Cat C/D visibility to 2½ SM.		MALSRL		MISSED APPROACH: Climb to 9000 direct CEGIX and on track 100° to DRAKE and hold.	
ATIS 125.0 254.3	SPRINGS APP CON 124.0 257.875				



SW-1, 09 JUL 2026 to 06 AUG 2026

SW-1, 09 JUL 2026 to 06 AUG 2026