

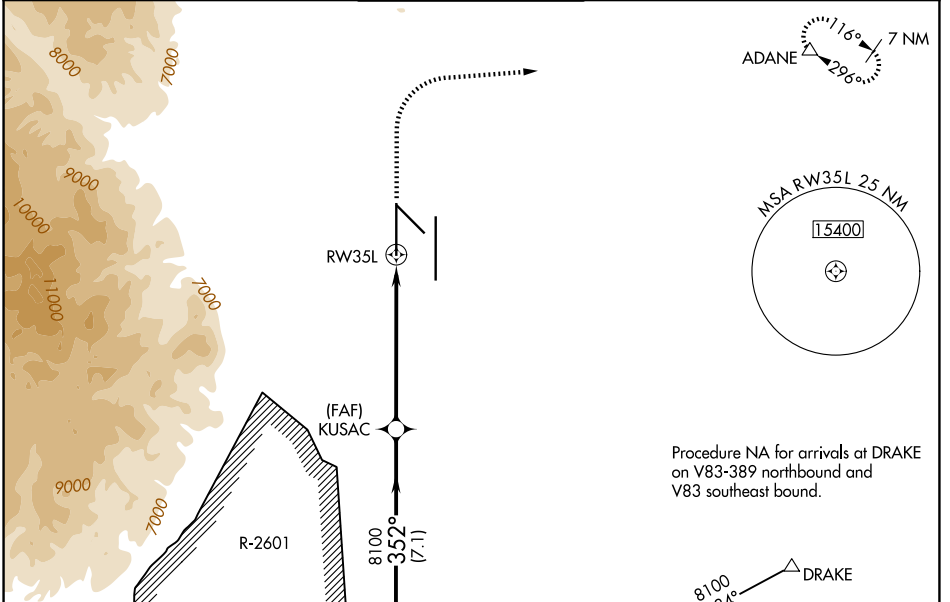
WAAS CH 49112 W35A	APP CRS 352°	Rwy Ldg 11022 TDZE 6075 Apt Elev 6187
--	------------------------	--

RNAV (GPS) Y RWY 35L

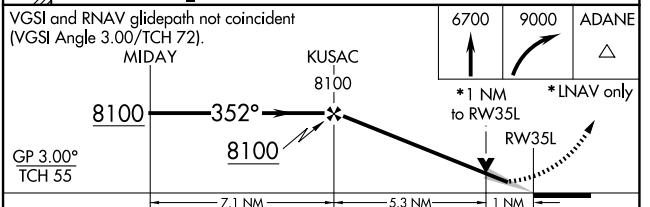
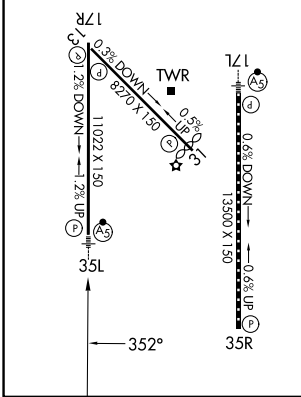
CITY OF COLORADO SPRINGS MUNI (COS)

<p>▼ For uncompensated Baro-VNAV systems, LNAV/VNAV NA below -21°C (-5°F) or above 54°C (130°F). DME/DME RNP- 0.3 NA. For inop MALSR increase LNAV Cat C and D visibility to RVR 5500. RADAR monitoring required when R-2601 in use. # RVR 1800 authorized with use of FD or AP or HUD to DA.</p>	<p>MALSR</p>	<p>MISSED APPROACH: Climb to 6700 then climbing right turn to 9000 direct ADANE and hold.</p>
--	--------------	---

ATIS 125.0 254.3	SPRINGS APP CON 124.0 257.875	SPRINGS TOWER 119.9 360.6	GND CON 121.7 348.6	CLNC DEL 134.45 363.125
----------------------------	---	-------------------------------------	-------------------------------	-----------------------------------



ELEV 6187	D	TDZE 6075
MIRL Rwy 13-31 HIRL Rwy 17R-35L and 17L-35R REIL Rwy 13, 17R, 31 and 35R TDZ/CL Rwy 17L and 35R		



CATEGORY	A	B	C	D
LPV DA #		6275/24	200 (100-1/2)	
LNAV/VNAV DA		6380/30	305 (200-5/8)	
LNAV MDA	6440/24	365 (300-1/2)	6440/35	365 (300-5/8)
CIRCLING	6740-1 553 (600-1)	6800-1 613 (700-1)	7040-2 1/2 853 (900-2 1/2)	7260-3 1073 (1100-3)

SW-1, 09 JUL 2026 to 06 AUG 2026

SW-1, 09 JUL 2026 to 06 AUG 2026