

LOC/DME I-MED 111.1 Chan 48	APP CRS 093°	Rwy Ldg 12246 TDZE 672 Apt Elev 680
---	------------------------	--

ILS RWY 10L (SA CAT I)

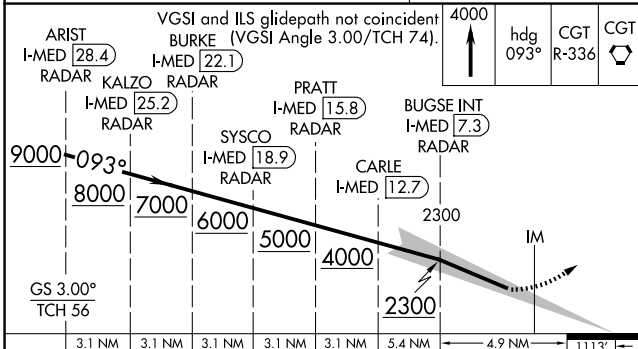
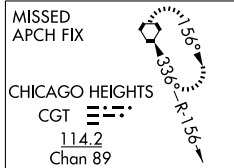
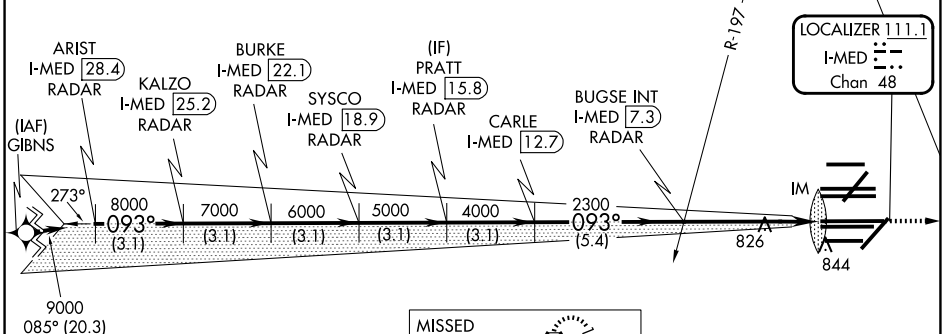
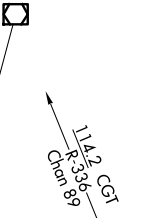
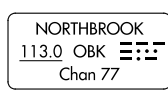
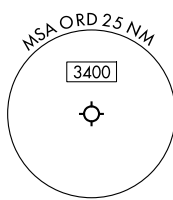
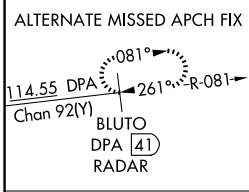
CHICAGO O'HARE INTL (ORD)

From GIBNS: RNAV-1 GPS required.
 RNAV 1-GPS or RADAR required for procedure entry. DME or RADAR required.
 Simultaneous approach authorized. Requires specific OPSPEC, MSPEC, or LOA approval and use of HUD to DH.

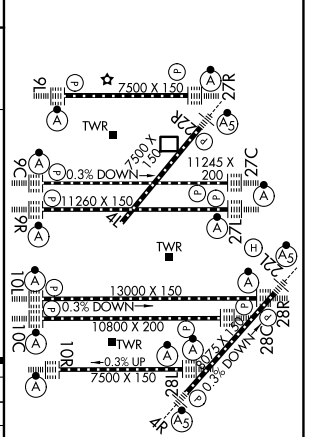


MISSED APPROACH: Climb to 4000 on heading 093° and CGT VORTAC R-336 to CGT VORTAC and hold.

D-ATIS 135.4 282.225	CHICAGO APP CON 119.0 292.125	O'HARE TOWER 132.7 348.0	GND CON 124.125 118.05 (TWR SOUTH) 226.675 (ALL TWRS)	(TWR CENTER) 121.75 (OBND) 121.9 (IBND)
--------------------------------	---	------------------------------------	---	---



ELEV 680	D	TDZE 672
----------	---	----------



CATEGORY	A	B	C	D
S-ILS 10L	RA 162/14		150 DA 822	
SA CATEGORY I ILS - SPECIAL AIRCREW & AIRCRAFT CERTIFICATION REQUIRED				

HIRL all rwys
 TDZL/RCLS all rwys except 4L

EC-3, 09 JUL 2026 to 06 AUG 2026

EC-3, 09 JUL 2026 to 06 AUG 2026