

ILS RWY 22L (SA CAT I & II) CHICAGO O'HARE INTL (ORD)

LOC I-LQQ 110.1	APP CRS 225°	Rwy Ldg TDZE Apt Elev 8075 654 680
---------------------------	------------------------	--

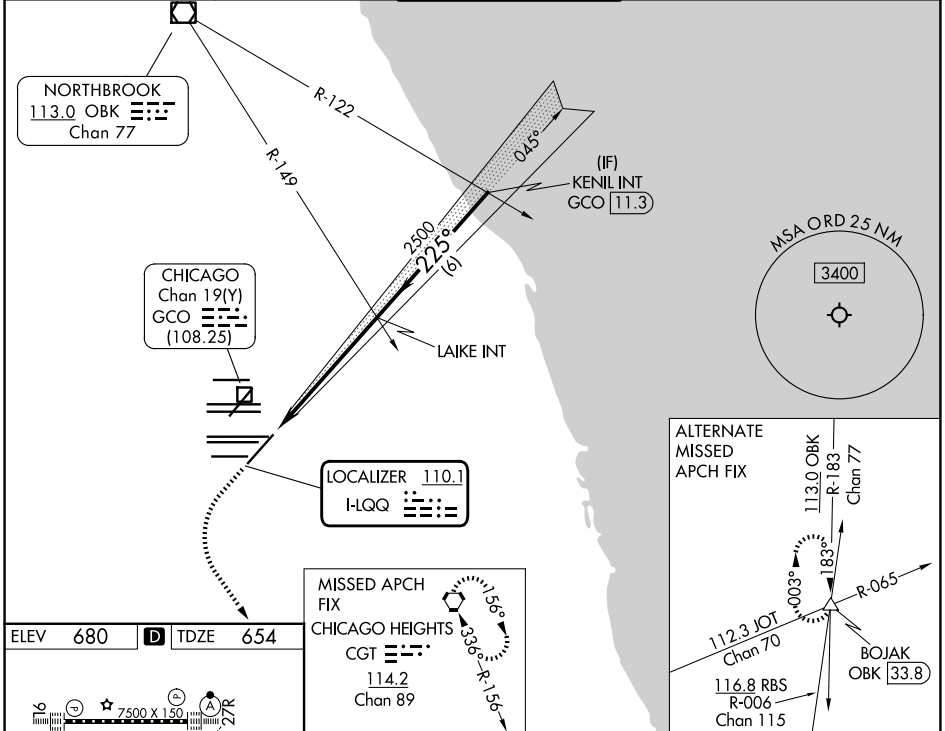
RADAR required for procedure entry.

Simultaneous approach authorized.
 SA CAT I: Requires specific OPSPEC, MSPEC, or LOA approval and use of HUD to DH.
 SA CAT II: Reduced lighting: Requires specific OPSPEC, MSPEC, or LOA approval and use of autoland or HUD to touchdown.

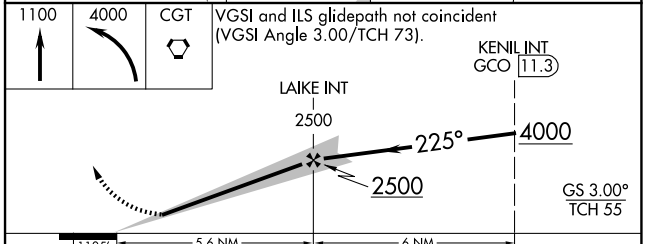
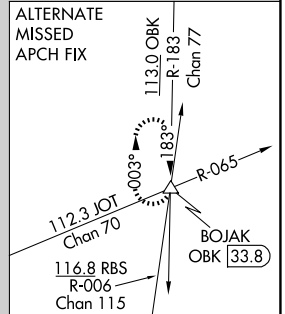
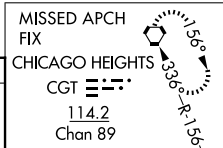
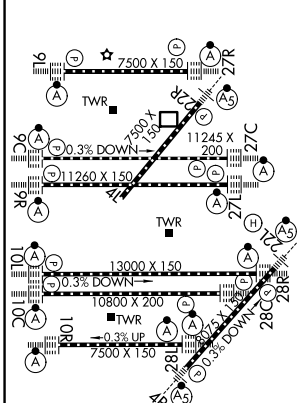


MISSED APPROACH:
 Climb to 1100 then climbing left turn to 4000 direct CGT VORTAC and hold.

D-ATIS 135.4 282.225	CHICAGO APP CON 119.0 292.125	O'HARE TOWER 120.75 348.0	GND CON (TWR CENTER) 124.125 (TWR NORTH) 121.75 (OBND) 118.05 (TWR SOUTH) 121.9 (IBND) 226.675 (ALL TWRs)
--------------------------------	---	-------------------------------------	---



ELEV 680 **D** TDZE 654



CATEGORY	A	B	C	D
S-ILS 22L	SA CAT I	RA 164/16	150 DA 804	
S-ILS 22L	SA CAT II	RA 112/12	100 DA 754	

SA CATEGORY I & II ILS - SPECIAL AIRCREW & AIRCRAFT CERTIFICATION REQUIRED

EC-3, 09 JUL 2026 to 06 AUG 2026

EC-3, 09 JUL 2026 to 06 AUG 2026