

| | | |
|--|------------------------|--|
| LOC/DME I-UYJ 111.9 Chan 56 | APP CRS 273° | Rwy Ldg 11245 TDZE 653 Apt Elev 680 |
|--|------------------------|--|

ILS RWY 27C (SA CAT I)

CHICAGO O'HARE INTL (ORD)

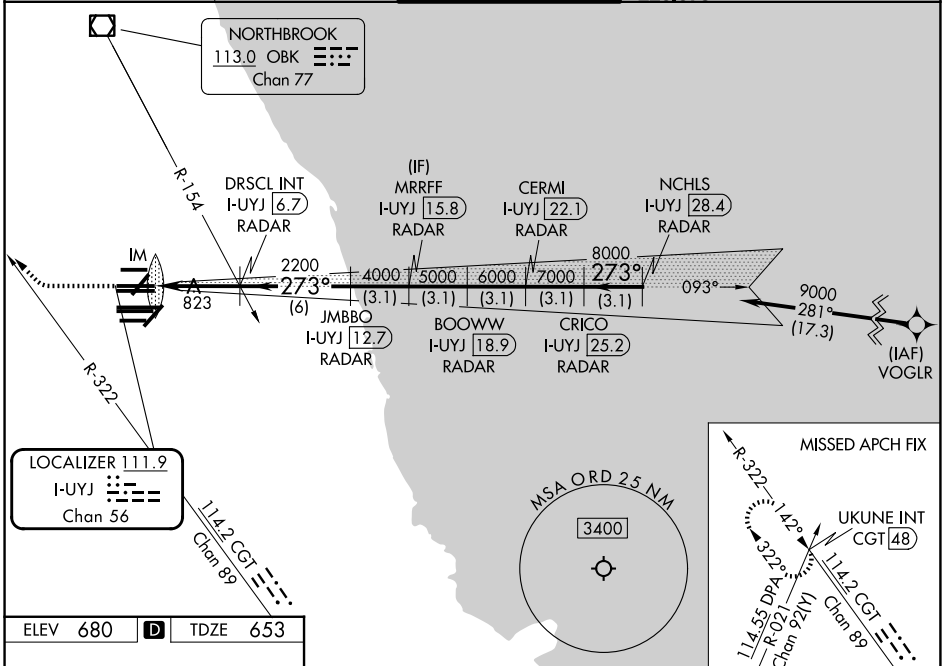
From VOGLR: RNAV 1-GPS required. Aircraft not GPS equipped - RADAR required for procedure entry. DME or RADAR required.

Simultaneous approach authorized. Requires specific OPSPEC, MSPEC, or LOA approval.

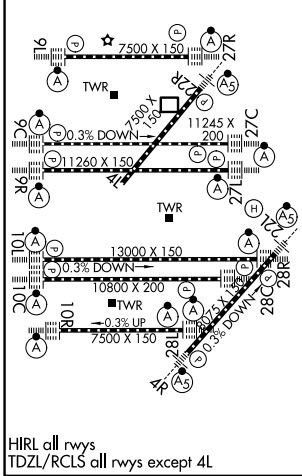
ALSF-2

MISSED APPROACH: Climb to 1100 then climbing right turn to 4000 on heading 290° and CGT R-322 to UKUNE INT/CGT 48 DME and hold.

| | | | | |
|--------------------------------|---|-------------------------------------|--|---|
| D-ATIS 135.4 282.225 | CHICAGO APP CON 119.0 292.125 | O'HARE TOWER 121.15 348.0 | GND CON (TWR CENTER) 124.125 (TWR NORTH) 118.05 (TWR SOUTH) 226.675 (ALL TWRs) | (TWR CENTER) 121.75 (OBND) 121.9 (IBND) |
|--------------------------------|---|-------------------------------------|--|---|



| | | |
|----------|----------|----------|
| ELEV 680 | D | TDZE 653 |
|----------|----------|----------|



| | | | | | |
|-----------|-----------|-----------|------------|---|------------------------------------|
| 1100 | 4000 | CGT R-322 | UKUNE INT | VGSI and ILS glidepath not coincident (VGSI Angle 3.00/TCH 75). | NCHLS I-UYJ 28.4 RADAR |
| ↑ | hdg 290° | | | | CERMI I-UYJ 22.1 RADAR |
| | | | | | MRRFF I-UYJ 15.8 RADAR |
| | | | | | DRSCL INT I-UYJ 6.7 RADAR |
| | | | | | JMBBO I-UYJ 12.7 RADAR |
| | | | | | BOOWW I-UYJ 18.9 RADAR |
| | | | | | CRICO I-UYJ 25.2 RADAR |
| | | | | | 9000 |
| | | | | | GS 3.00° TCH 56 |
| | | | | | 2200 4000 5000 6000 7000 8000 |
| | | | | | 3.1 NM 3.1 NM 3.1 NM 3.1 NM 3.1 NM |
| CATEGORY | A | B | C | D | |
| S-ILS 27C | RA 158/14 | | 150 DA 803 | | |

SA CATEGORY I ILS - SPECIAL AIRCREW & AIRCRAFT CERTIFICATION REQUIRED

EC-3, 09 JUL 2026 to 06 AUG 2026

EC-3, 09 JUL 2026 to 06 AUG 2026