

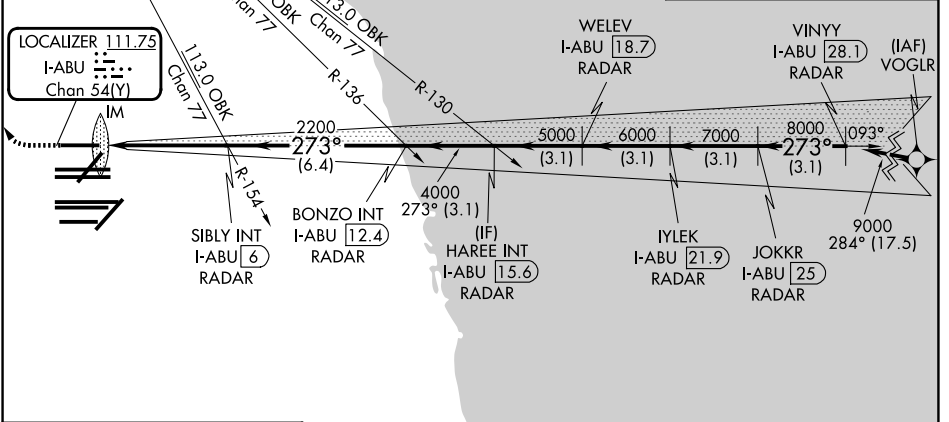
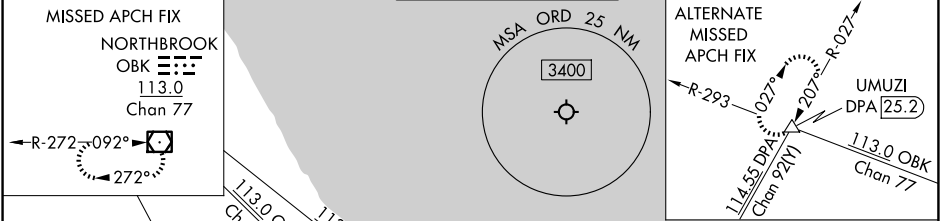
LOC/DME I-ABU <b>111.75</b> Chan 54 (Y)	APP CRS <b>273°</b>	Rwy Ldg <b>7500</b> TDZE <b>664</b> Apt Elev <b>680</b>
---	------------------------	---

# ILS RWY 27R (CAT II & III)

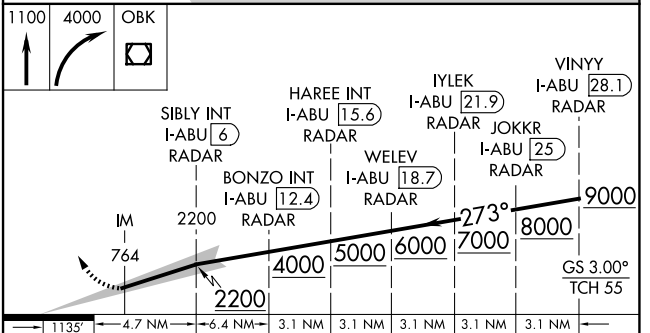
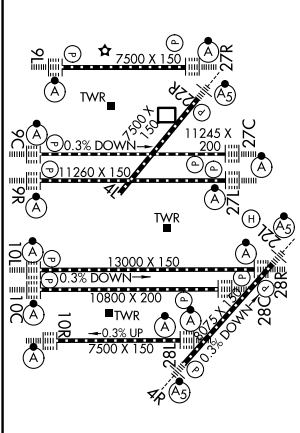
CHICAGO O'HARE INTL (ORD)

RNAV-1 GPS or RADAR required for procedure entry. RADAR or DME required.	ALSF-2	MISSED APPROACH: Climb to 1100 then climbing right turn to 4000 direct OBK VOR/DME and hold, continue climb-in-hold to 4000.
Simultaneous approach authorized.		

D-ATIS <b>135.4 282.225</b>	CHICAGO APP CON <b>119.0 292.125</b>	O'HARE TOWER <b>128.15 348.0</b>	GND CON (TWR CENTER) <b>124.125</b> (TWR SOUTH) <b>118.05</b> <b>226.675</b> (ALL TWRs)	(TWR CENTER) <b>121.75</b> (CBND) (IBND) <b>121.9</b>
--------------------------------	---	-------------------------------------	---	--



ELEV 680	D	TDZE 664
----------	---	----------



CATEGORY	A	B	C	D
S-ILS-27R	CAT II RA 101/12 100 DA 764			
S-ILS-27R	CAT III RVR 06			

## CATEGORY II & III ILS - SPECIAL AIRCREW & AIRCRAFT CERTIFICATION REQUIRED

EC-3, 09 JUL 2026 to 06 AUG 2026

EC-3, 09 JUL 2026 to 06 AUG 2026