

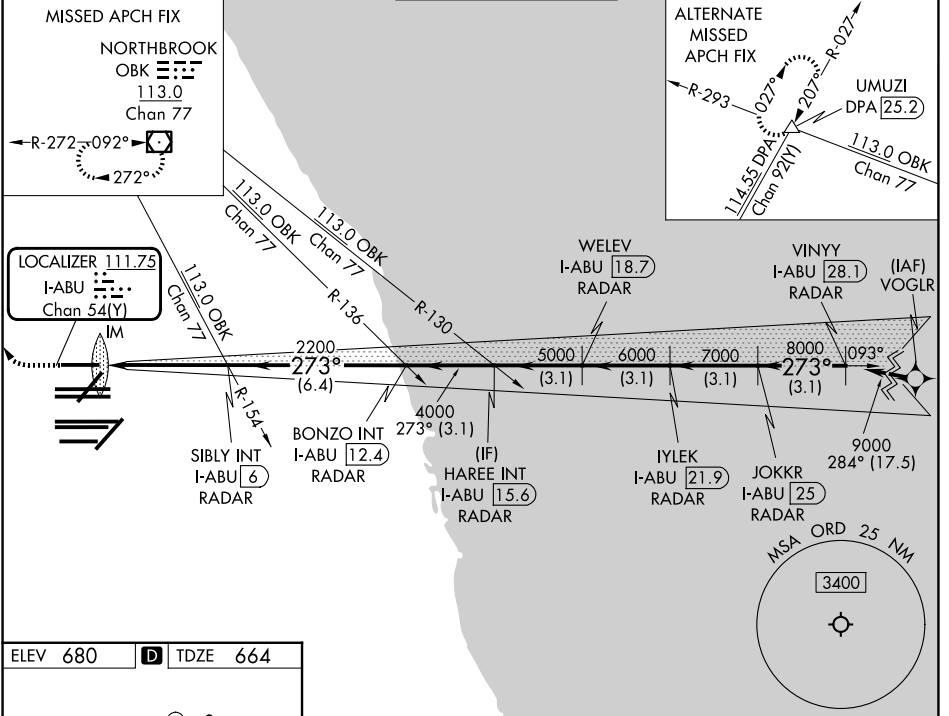
LOC/DME I-ABU 111.75 Chan 54 (Y)	APP CRS 273°	Rwy Ldg 7500 TDZE 664 Apt Elev 680
---	------------------------	---

ILS RWY 27R (SA CAT I)

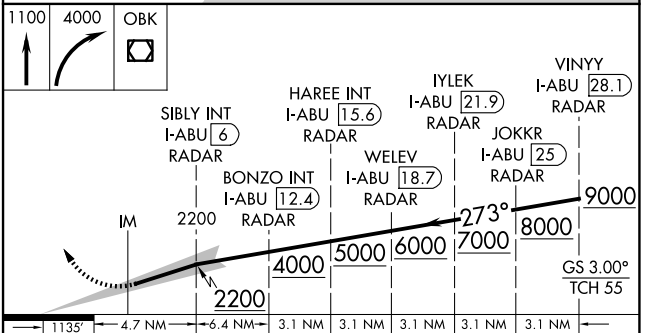
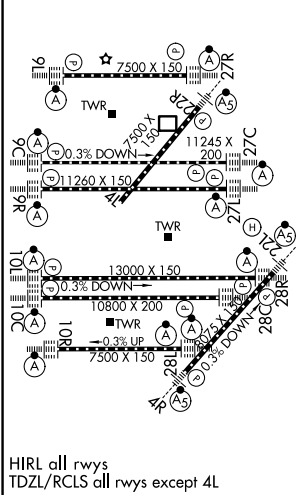
CHICAGO O'HARE INTL (ORD)

RNAV-1 GPS or RADAR required for procedure entry. RADAR or DME required.	ALSF-2	MISSED APPROACH: Climb to 1100 then climbing right turn to 4000 direct OBK VOR/DME and hold, continue climb-in-hold to 4000.
Simultaneous approach authorized. Requires specific OPSPEC, MSPEC, or LOA approval and use of HUD to DH.		

D-ATIS 135.4 282.225	CHICAGO APP CON 119.0 292.125	O'HARE TOWER 128.15 348.0	GND CON (TWR NORTH) 124.125 (TWR SOUTH) 118.05 226.675 (ALL TWRS)	(TWR CENTER) 121.75 (OBND) (IBND) 121.9
--------------------------------	---	-------------------------------------	--	--



ELEV 680	D	TDZE 664
----------	----------	----------



S-ILS-27R	RA 171/14 150 DA 814			
SA CATEGORY I ILS - SPECIAL AIRCREW & AIRCRAFT CERTIFICATION REQUIRED				

EC-3, 09 JUL 2026 to 06 AUG 2026

EC-3, 09 JUL 2026 to 06 AUG 2026