

| | | | |
|--|------------------------|-----------------------------|---|
| LOC/DME I-VQX 110.75 Chan 44(Y) | APP CRS 274° | Rwy Ldg TDZE Apt Elev | 7500 667 680 |
|--|------------------------|-----------------------------|---|

ILS RWY 28L (CAT II & III)

CHICAGO O'HARE INTL (ORD)

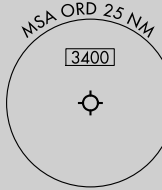
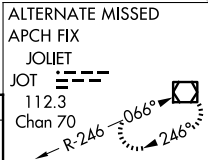
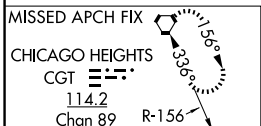
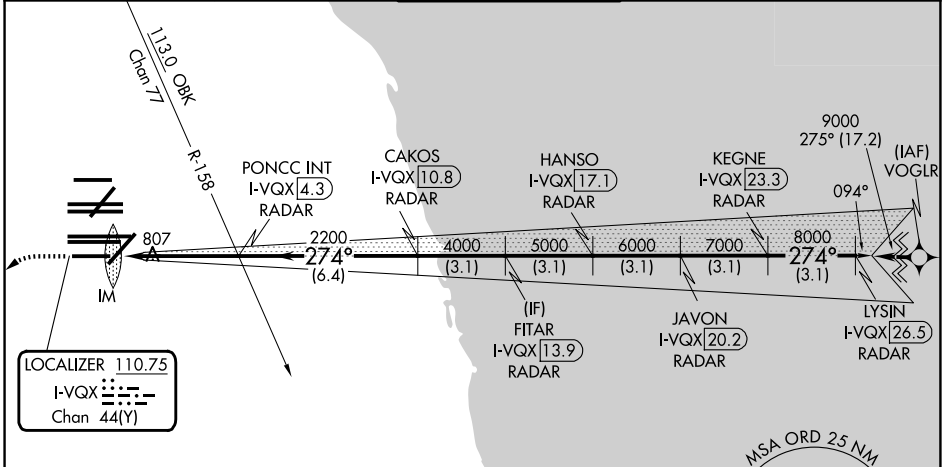
From VOGLR: RNAV 1-GPS required.
 Aircraft not GPS equipped - RADAR required for procedure entry.
 DME or RADAR required.

ALSIF-2

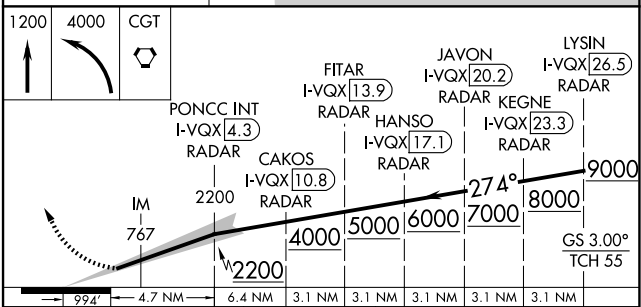
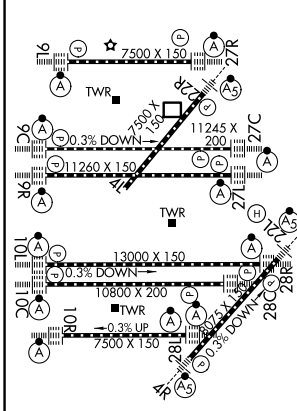
MISSED APPROACH:
 Climb to 1200 then
 climbing left turn to
 4000 direct CGT
 VORTAC and hold.

Simultaneous approach authorized.
 CAT II: RVR 1000 authorized with specific OPSPEC, MSPEC,
 or LOA approval and use of autoland or HUD to touchdown.

| | | | | |
|--------------------------------|---|------------------------------------|--|---|
| D-ATIS 135.4 282.225 | CHICAGO APP CON 119.0 292.125 | O'HARE TOWER 133.0 348.0 | GND CON (TWR CENTER) 124.125 (TWR NORTH) 118.05 (TWR SOUTH) 226.675 (ALL TWRS) | 121.75 (OBND) 121.9 (IBND) |
|--------------------------------|---|------------------------------------|--|---|



| | | |
|----------|----------|----------|
| ELEV 680 | D | TDZE 667 |
|----------|----------|----------|



| | | | | |
|-----------|-----------------------------|---|---|---|
| CATEGORY | A | B | C | D |
| S-ILS 28L | CAT II RA 106/12 100 DA 767 | | | |
| S-ILS 28L | CAT III RVR 06 | | | |

CATEGORY II & III ILS - SPECIAL AIRCREW & AIRCRAFT CERTIFICATION REQUIRED

EC-3, 09 JUL 2026 to 06 AUG 2026

EC-3, 09 JUL 2026 to 06 AUG 2026