

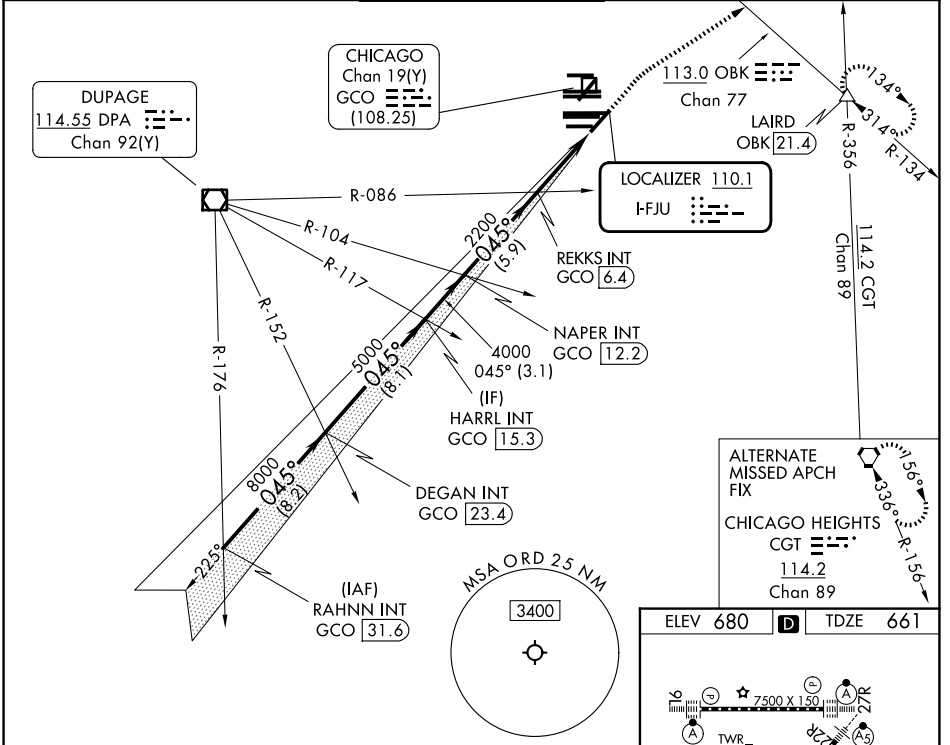
LOC I-FJU 110.1	APP CRS 045°	Rwy Ldg TDZE Apt Elev 8075 661 680
---------------------------	------------------------	--

ILS RWY 4R (SA CAT I & II)

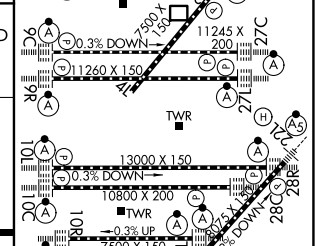
CHICAGO O'HARE INTL (ORD)

RADAR required for procedure entry.		MALSR 	MISSED APPROACH: Climb to 1200 then climbing right turn to 4000 on heading 060° and OBK VOR/DME R-134 to LAIRD INT/OBK 21.4 DME and hold.
<p>▼ SA CAT I: Requires specific OPSPEC, MSPEC, or LOA approval and use of HUD to DH. SA CAT II: Reduced lighting: Requires specific OPSPEC, MSPEC, or LOA approval and use of autoland or HUD to touchdown.</p>			

D-ATIS 135.4 282.225	CHICAGO APP CON 119.0 292.125	O'HARE TOWER 120.75 348.0	GND CON (TWR NORTH) 124.125 118.05 (TWR SOUTH) 226.675 (ALL TWRS)	(TWR CENTER) 121.75 (OBND) 121.9 (IBND)
--------------------------------	---	-------------------------------------	--	---



RAHNN INT GCO [31.6]	DEGAN INT GCO [23.4]	HARRL INT GCO [15.3]	NAPER INT GCO [12.2]	REKKS INT GCO [6.4]	LAIRD INT/OBK 21.4
<p>VGSI and ILS glidepath not coincident (VGSI Angle 3.00/TCH 67).</p> <p>1200 4000 ↑ hdg 060°</p>					
<p>GS 3.00° TCH 52</p> <p>11000 8000 5000 4000 2200</p> <p>045°</p> <p>8.2 NM 8.1 NM 3.1 NM 5.9 NM 4.4 NM 10.49 NM</p>					



CATEGORY	A	B	C	D
S-ILS 4R	SA CAT I	RA 160/16	150 DA 811	
S-ILS 4R	SA CAT II	RA 111/12	100 DA 761	

SA CATEGORY I & II ILS - SPECIAL AIRCREW & AIRCRAFT CERTIFICATION REQUIRED

ELEV 680	D	TDZE 661
----------	---	----------

HIRL all rwys
TDZL/RCLS all rwys except 4L