

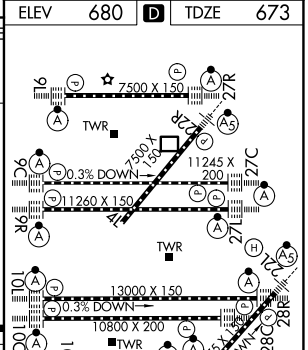
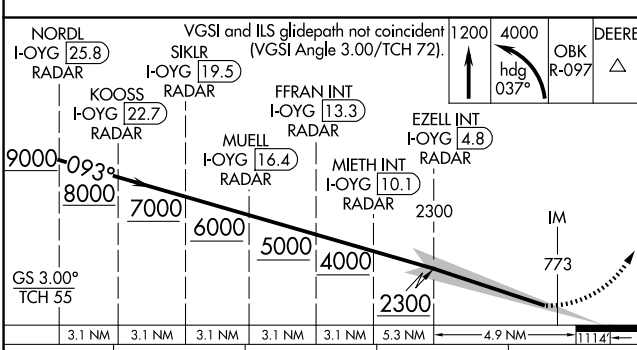
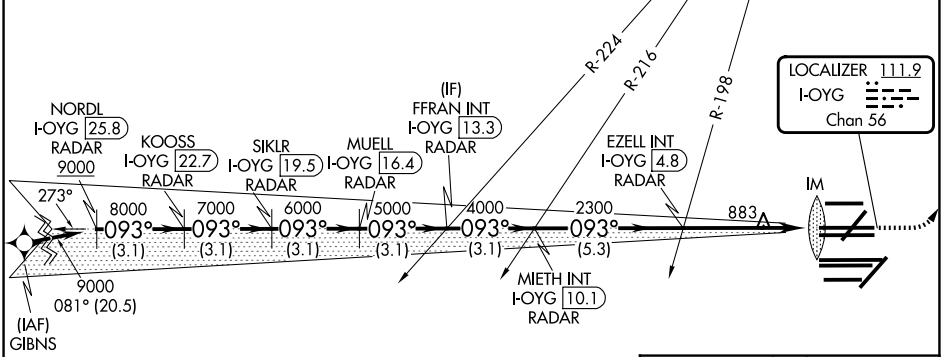
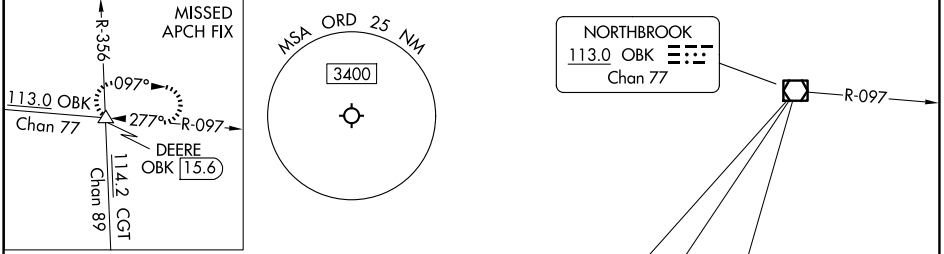
LOC/DME I-OYG <b>111.9</b> Chan 56	APP CRS <b>093°</b>	Rwy Ldg <b>11245</b> TDZE <b>673</b> Apt Elev <b>680</b>
--	------------------------	--

# ILS RWY 9C (CAT II & III)

CHICAGO O'HARE INTL (ORD)

RNP APCH - GPS. From GIBNS. DME or RADAR required. RADAR required for procedure entry at GIBNS.	ALSF-2 	MISSED APPROACH: Climb to 1200 then climbing left turn to 4000 on heading 037° and OBK VOR/DME R-097 to DEERE INT/ OBK 15.6 DME and hold.
Simultaneous approach authorized. CAT II: RVR 1000 authorized with specific OPSPEC, MSPEC, or LOA approval and use of autoland or HUD to touchdown. Localizer not suitable for electronic rollout guidance.		

D-ATIS <b>135.4 282.225</b>	CHICAGO APP CON <b>119.0 292.125</b>	O'HARE TOWER <b>121.15 348.0</b>	GND CON (TWR NORTH) <b>124.125</b> 118.05 (TWR SOUTH) <b>226.675</b> (ALL TWRs)	(TWR CENTER) <b>121.75</b> (OBND) <b>121.9</b> (IBND)
--------------------------------	---	-------------------------------------	--	---



CATEGORY	A	B	C	D
S-ILS 9C	CAT II RA 100/12 100 DA 773			
S-ILS 9C	CAT III RVR 07			

## CATEGORY II & III ILS - SPECIAL AIRCREW & AIRCRAFT CERTIFICATION REQUIRED

HIRL all rwys  
TDZL/RCLS all rwys except 4L

EC-3, 09 JUL 2026 to 06 AUG 2026

EC-3, 09 JUL 2026 to 06 AUG 2026