

LOC/DME I-SXH 108.95 Chan 26(Y)	APP CRS 093°	Rwy Ldg 10540 TDZE 669 Apt Elev 680
--	------------------------	--

ILS or LOC RWY 10C

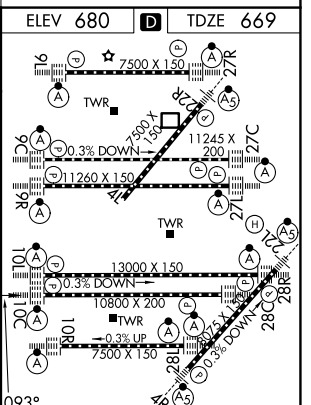
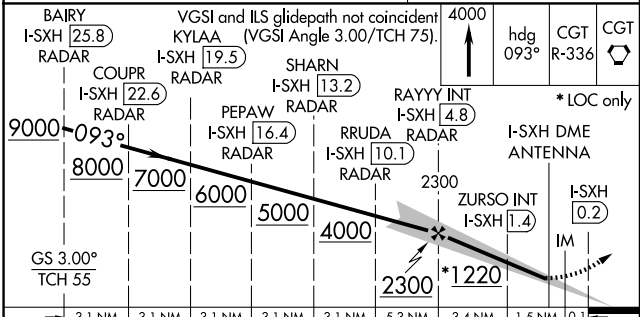
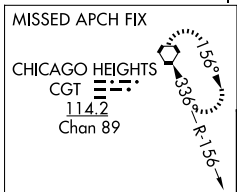
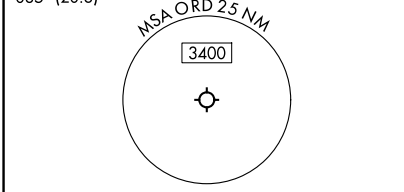
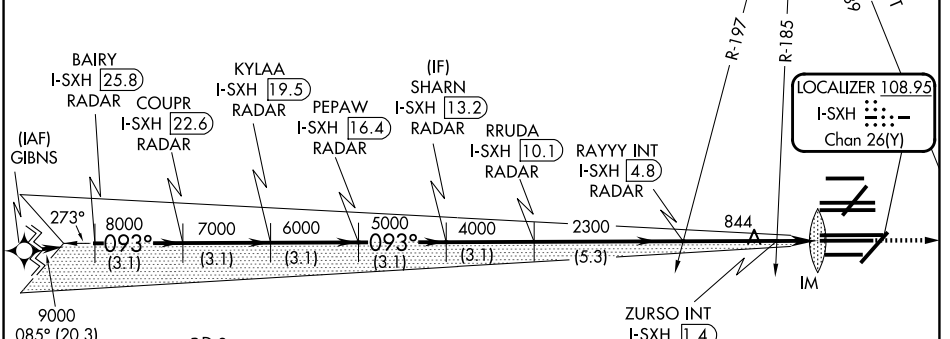
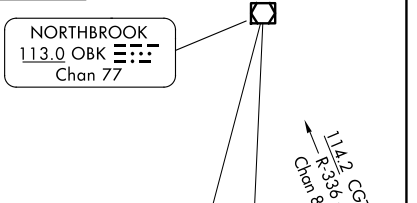
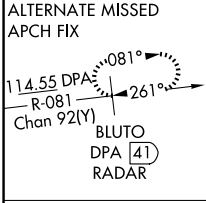
CHICAGO O'HARE INTL (ORD)

From GIBNS: RNAV-1 GPS required.
 RNAV 1-GPS or RADAR required for procedure entry. DME or RADAR required.
 Simultaneous approach authorized.



MISSED APPROACH: Climb to 4000 on heading 093° and CGT VORTAC R-336 to CGT VORTAC and hold.

D-ATIS 135.4 282.225	CHICAGO APP CON 119.0 292.125	O'HARE TOWER 120.75 348.0	GND CON (TWR NORTH) 124.125 (TWR SOUTH) 118.05 (ALL TWRs) 226.675	(TWR CENTER) 121.75 (IBND) 121.9 (IBND)
--------------------------------	---	-------------------------------------	---	---



BAIRY I-SXH 25.8 RADAR	COUPR I-SXH 22.6 RADAR	KYLAA I-SXH 19.5 RADAR	PEPAW I-SXH 16.4 RADAR	SHARN I-SXH 13.2 RADAR	RRUDA I-SXH 10.1 RADAR	RAYY INT I-SXH 4.8 RADAR	ZURSO INT I-SXH 1.4	I-SXH DME ANTENNA I-SXH 0.2
3.1 NM	3.1 NM	3.1 NM	3.1 NM	3.1 NM	5.3 NM	3.4 NM	1.5 NM	0.1 NM
S-ILS 10C		869/18			200 (200-½)			
S-LOC 10C		1220/24		551 (600-½)		1220/60		551 (600-¼)
ZURSO FIX MINIMUMS (DUAL VOR RECEIVERS OR DME REQUIRED)								
S-LOC 10C		1100/24		431 (500-½)		1100/40		431 (500-¾)

HIRL all rwys
 TDZL/RCLS all rwys except 4L
 FAF to MAP 5 NM

Knots	60	90	120	150	180
Min:Sec	5:00	3:20	2:30	2:00	1:40

EC-3, 09 JUL 2026 to 06 AUG 2026

EC-3, 09 JUL 2026 to 06 AUG 2026