

| | | |
|---|------------------------|--|
| LOC/DME I-MED 111.1 Chan 48 | APP CRS 093° | Rwy Ldg 12246 TDZE 672 Apt Elev 680 |
|---|------------------------|--|

ILS or LOC RWY 10L

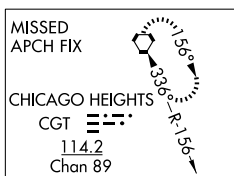
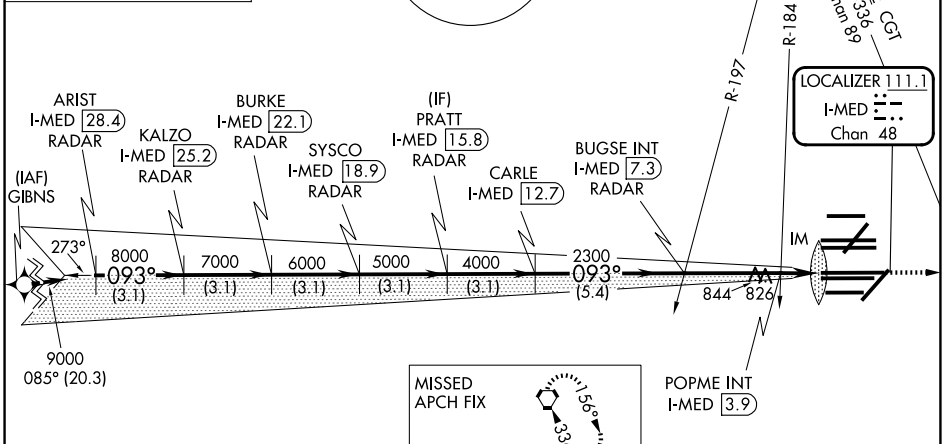
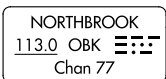
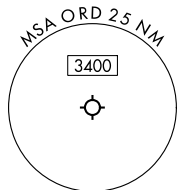
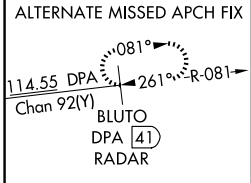
CHICAGO O'HARE INTL (ORD)

From GIBNS: RNAV-1 GPS required.
 RNAV 1-GPS or RADAR required for procedure entry. DME or RADAR required.
 Simultaneous approach authorized.

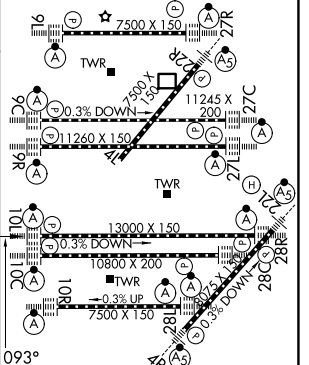
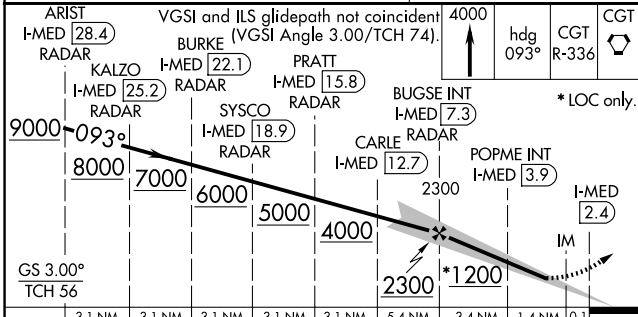


MISSED APPROACH: Climb to 4000 on heading 093° and CGT VORTAC R-336 to CGT VORTAC and hold.

| | | | |
|--------------------------------|---|------------------------------------|---|
| D-ATIS 135.4 282.225 | CHICAGO APP CON 119.0 292.125 | O'HARE TOWER 132.7 348.0 | GND CON (TWR CENTER) 121.75 (OBND) 121.9 (IBND) |
| | | | 226.675 (ALL TWRS) |



| | |
|----------|----------|
| ELEV 680 | TDZE 672 |
|----------|----------|



| | | | | | | | | |
|---|--------|---------------------|--------|--------|---------------------|--------|------------|--------|
| 3.1 NM | 3.1 NM | 3.1 NM | 3.1 NM | 3.1 NM | 5.4 NM | 3.4 NM | 1.4 NM | 0.1 NM |
| CATEGORY A | | CATEGORY B | | | CATEGORY C | | CATEGORY D | |
| S-ILS 10L | | 872/18 | | | 200 (200-½) | | | |
| S-LOC 10L | | 1200/24 528 (600-½) | | | 1200/55 528 (600-1) | | | |
| POPME FIX MINIMUMS (DUAL VOR RECEIVERS OR DME REQUIRED) | | | | | | | | |
| S-LOC 10L | | 1080/24 408 (400-½) | | | 1080/40 408 (400-¾) | | | |

| | | | | | |
|------------------------------|------|------|------|------|------|
| HIREL all rwys | | | | | |
| TDZL/RCLS all rwys except 4L | | | | | |
| FAF to MAP 4.9 NM | | | | | |
| Knots | 60 | 90 | 120 | 150 | 180 |
| Min:Sec | 4:54 | 3:16 | 2:27 | 1:58 | 1:38 |

EC-3, 09 JUL 2026 to 06 AUG 2026

EC-3, 09 JUL 2026 to 06 AUG 2026