

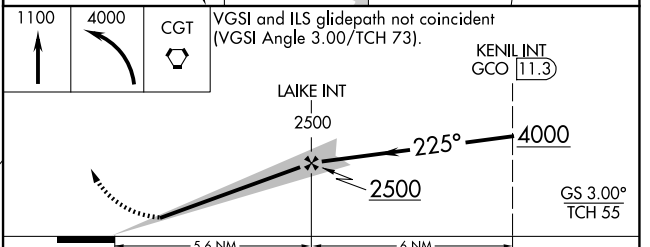
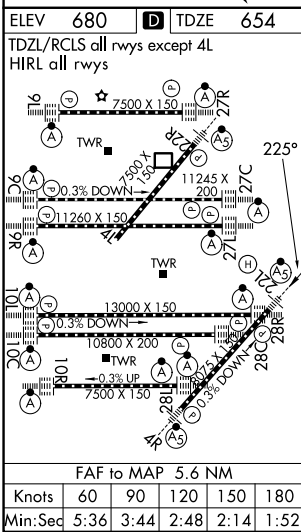
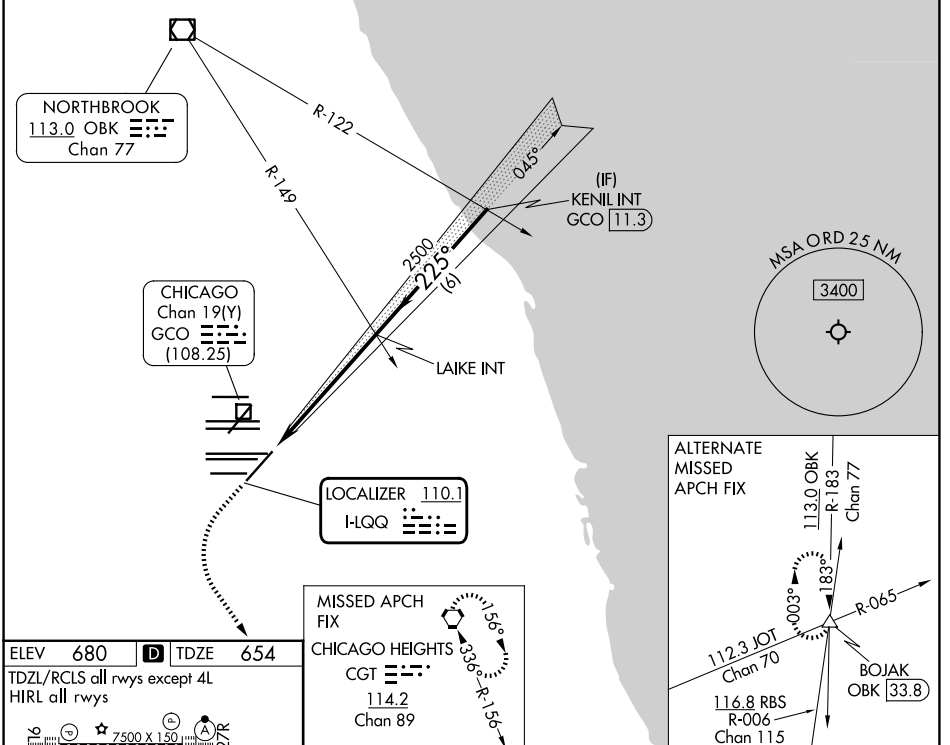
LOC I-LQQ <b>110.1</b>	APP CRS <b>225°</b>	Rwy Ldg 8075
		TDZE 654
		Apt Elev 680

# ILS or LOC RWY 22L

CHICAGO O'HARE INTL (ORD)

RADAR required for procedure entry.		MALSR	MISSED APPROACH: Climb to 1100 then climbing left turn to 4000 direct CGT VORTAC and hold.
Simultaneous approach authorized.			

D-ATIS <b>135.4 282.225</b>	CHICAGO APP CON <b>119.0 292.125</b>	O'HARE TOWER <b>120.75 348.0</b>	GND CON (TWR CENTER) <b>124.125</b> (TWR NORTH) <b>118.05</b> (TWR SOUTH) <b>226.675</b> (ALL TWRS)	(TWR CENTER) <b>121.75</b> (OBND) <b>121.9</b> (IBND)
--------------------------------	---	-------------------------------------	--	---



ELEV 680	TDZE 654	CHICAGO HEIGHTS CGT 114.2 Chan 89		MISSED APCH FIX 1100 4000 CGT		VGSI and ILS glidepath not coincident (VGSI Angle 3.00/TCH 73).	
FAF to MAP 5.6 NM				KNOTS: 60 90 120 150 180			
MIN:SEC: 5:36 3:44 2:48 2:14 1:52							
CATEGORY	A	B	C	D			
S-ILS 22L	854/18			200 (200-1/2)			
S-LOC 22L	1120/24	466 (500-1/2)	1120/50	466 (500-1)			
CIRCLING	1220-1	540 (600-1)	1220-1 1/2	1460-2 1/2	540 (600-1 1/2)	780 (800-2 1/2)	

EC-3, 09 JUL 2026 to 06 AUG 2026

EC-3, 09 JUL 2026 to 06 AUG 2026