

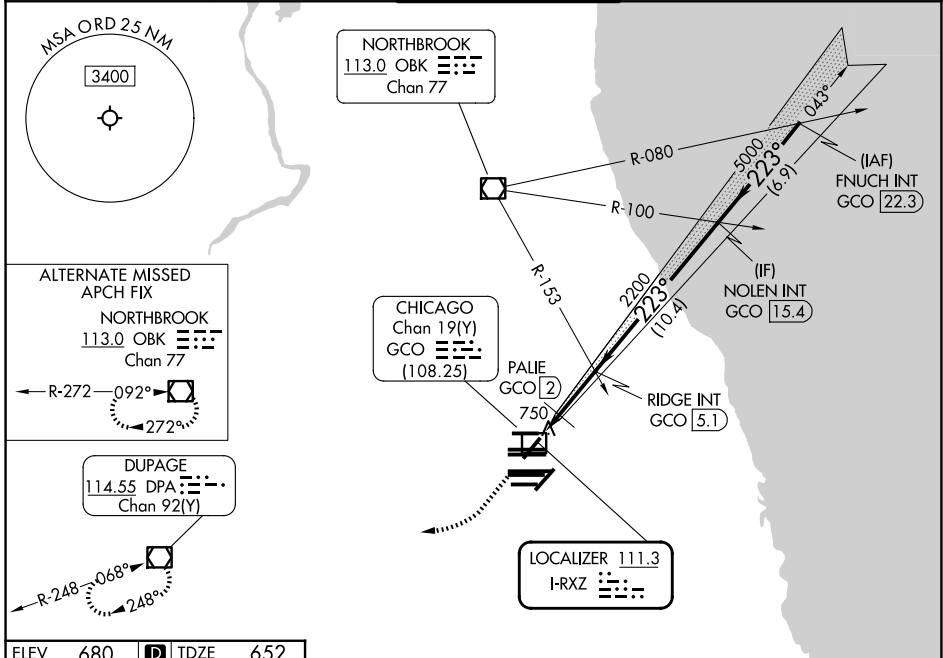
LOC I-RXZ 111.3	APP CRS 223°	Rwy Ldg TDZE Apt Elev	7300 652 680
---------------------------	------------------------	-----------------------------	---

ILS or LOC RWY 22R

CHICAGO O'HARE INTL (ORD)

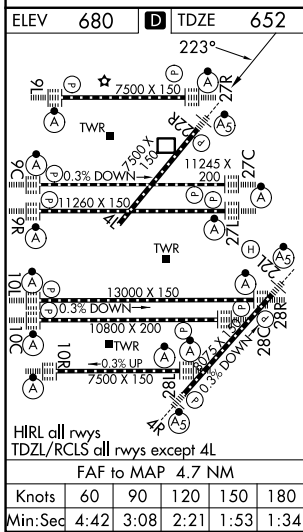
RADAR required for procedure entry.		MALSR	MISSED APPROACH: Climb to 1300 then climbing right turn to 4000 direct DPA VOR/DME and hold.
Simultaneous approach authorized. DME from GCO DME.			

D-ATIS 135.4 282.225	CHICAGO APP CON 119.0 292.125	O'HARE TOWER 126.9 348.0	GND CON (TWR CENTER) 124.125 (TWR NORTH) 118.05 (TWR SOUTH) 226.675 (ALL TWRs)	(TWR CENTER) 121.75 (OBND) 121.9 (IBND)
--------------------------------	---	------------------------------------	--	---



EC-3, 09 JUL 2026 to 06 AUG 2026

EC-3, 09 JUL 2026 to 06 AUG 2026



ELEV 680	D	TDZE 652	1300 4000 DPA VGSI and ILS glidepath not coincident (VGSI Angle 3.00/TCH 69).			
11245 X 200 11260 X 150 13000 X 150 10800 X 200 7500 X 150			RIDGE INT GCO (5.1) PALIE GCO (2) NOLEN INT GCO (15.4) FNUCH INT GCO (22.3)		7000	
0.8 NM 0.8 NM 3.1 NM 10.4 NM 6.9 NM			1220 2200 5000 7000 GS 3.00° TCH 49			
CATEGORY	A	B	C	D		
S-ILS 22R	852/18 200 (200-½)					
S-LOC 22R	1220/24	568 (600-½)	1220-1¼	568 (600-1¼)		
CIRCLING	1220-1	540 (600-1)	1220-1⅝	1460-2½		
			540 (600-1⅝)	780 (800-2½)		
PALIE FIX MINIMUMS						
S-LOC 22R	980/24	328 (300-½)	980/26	328 (300-½)		
CIRCLING	1220-1	540 (600-1)	1220-1½	1460-2½		
			540 (600-1½)	780 (800-2½)		
Knots	60	90	120	150	180	
Min:Sec	4:42	3:08	2:21	1:53	1:34	