

LOC/DME I-VZE 108.95 Chan 26 (Y)	APP CRS 273°	Rwy Ldg 10800	TDZE 651
		Apt Elev 680	

ILS or LOC RWY 28C

CHICAGO O'HARE INTL (ORD)

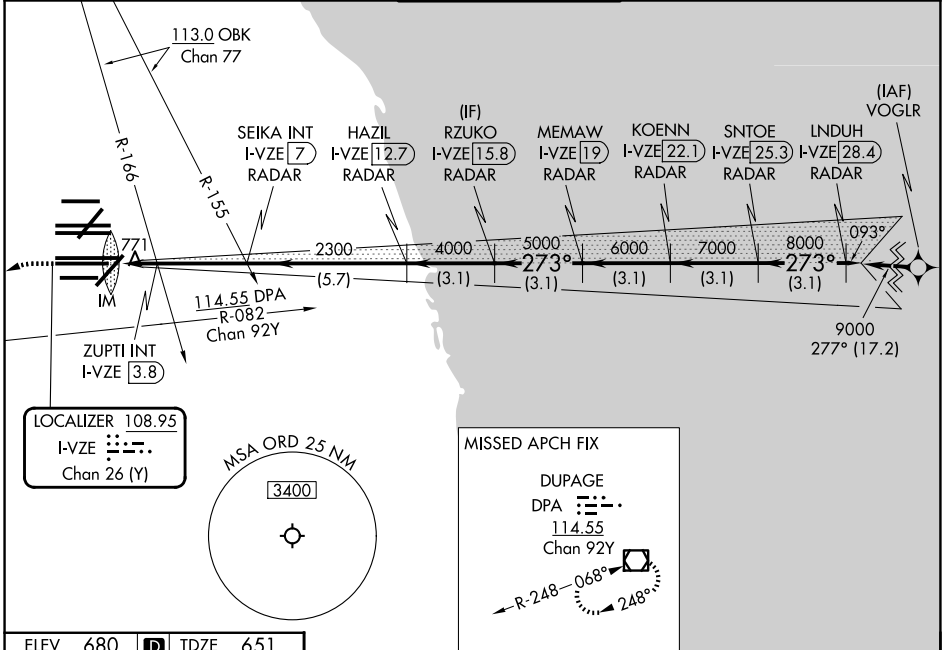
From VOGLR: RNAV 1-GPS required.
Aircraft not GPS equipped - RADAR required for procedure entry.
DME or RADAR required.

ALSf-2

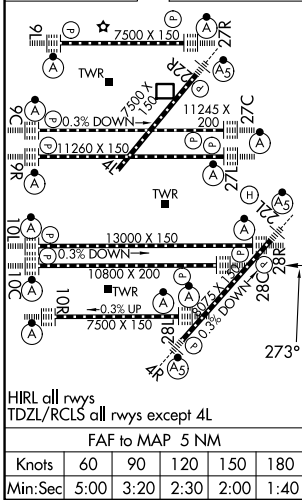
MISSED APPROACH: Climb to 1100 then climbing left turn to 4000 on heading 215° and DPA VOR/DME R-082 to DPA VOR/DME and hold.

Simultaneous approach authorized.

D-ATIS 135.4 282.225	CHICAGO APP CON 119.0 292.125	O'HARE TOWER 120.75 348.0	GND CON (TWR CENTER) 124.125 (TWR NORTH) 118.05 (TWR SOUTH) 226.675 (ALL TWRS)	(TWR CENTER) 121.75 (OBND) 121.9 (IBND)
--------------------------------	---	-------------------------------------	--	---



ELEV 680	D	TDZE 651
----------	---	----------



1100	4000	DPA R-082	DPA	RZUKO I-VZE 15.8 RADAR	KOENN I-VZE 22.1 RADAR	LNDUH I-VZE 28.4 RADAR	
*LOC only.				SEIKA INT I-VZE 7 RADAR	MEMAW I-VZE 19 RADAR	SNTOE I-VZE 25.3 RADAR	
*I-VZE 2				ZUPTI INT I-VZE 3.8	HAZIL I-VZE 12.7 RADAR	2300	
IM				*I-VZE 2.9	4000	5000 6000 7000 8000	
GS 3.00° TCH 55				VGSi and ILS glidepath not coincident (VGSi Angle 3.00/TCH 80).			
CATEGORY				A	B	C	D
S-ILS 28C				851/18 200 (200-½)			
S-LOC 28C				1200/24 549 (600-½)		1200/60 549 (600-1¼)	
ZUPTI FIX MINIMUMS (DUAL VOR RECEIVERS OR DME REQUIRED)							
S-LOC 28C				1040/24 389 (400-½)		1040/35 389 (400-¾)	

EC-3, 09 JUL 2026 to 06 AUG 2026

EC-3, 09 JUL 2026 to 06 AUG 2026