

LOC/DME I-VQX 110.75 Chan 44(Y)	APP CRS 274°	Rwy Ldg TDZE Apt Elev	7500 667 680
--	------------------------	-----------------------------	---

ILS or LOC RWY 28L

CHICAGO O'HARE INTL (ORD)

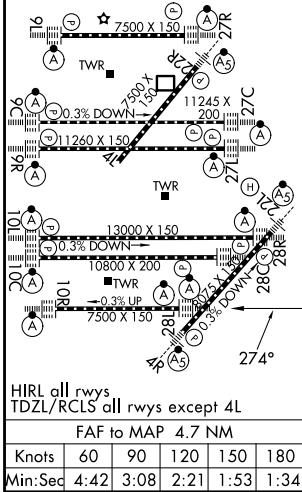
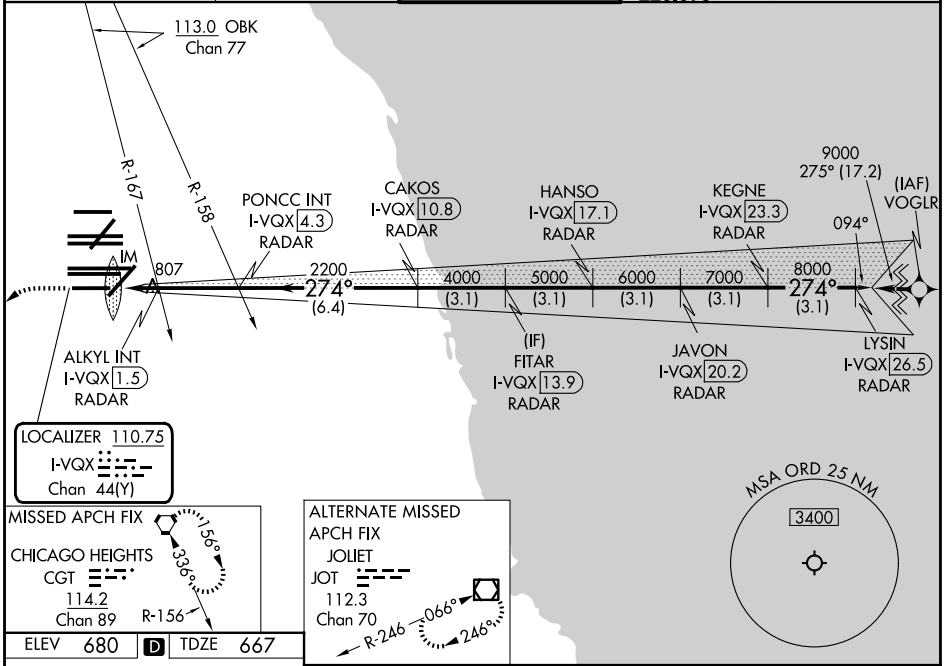
Aircraft not GPS equipped - RADAR required for procedure entry.
DME or RADAR required.
From VOGLR: RNAV 1-GPS required.

Simultaneous approach authorized.

ALSf-2

MISSED APPROACH: Climb to 1200 then climbing left turn to 4000 direct CGT VORTAC and hold.

D-ATIS 135.4 282.225	CHICAGO APP CON 119.0 292.125	O'HARE TOWER 133.0 348.0	GND CON (TWR CENTER) 124.125 (TWR NORTH) 118.05 (TWR SOUTH) 226.675 (ALL TWRs)	(TWR CENTER) 121.75 (OBND) 121.9 (IBND)
--------------------------------	---	------------------------------------	--	---



ELEV 680	TDZE 667	*LOC only.			
I-VQX DME ANTENNA ALKYL INT I-VQX [1.5] RADAR PONCC INT I-VQX [4.3] RADAR CAKOS I-VQX [10.8] RADAR HANSO I-VQX [17.1] RADAR JAVON I-VQX [20.2] RADAR KEKNE I-VQX [23.3] RADAR LYSIN I-VQX [26.5] RADAR		JAVON I-VQX [20.2] RADAR KEKNE I-VQX [23.3] RADAR LYSIN I-VQX [26.5] RADAR			
1200	4000	CGT	*LOC only.		
I-VQX [0.3] at 2200 *1240 at 2200		4000 5000 6000 7000 8000 9000 274° GS 3.00° TCH 55			
CATEGORY	A	B	C	D	
S-ILS 28L	867/18 200 (200-½)				
S-LOC 28L	1240/24	573 (600-½)	1240-1/4	573 (600-1/4)	
ALKYL FIX MINIMUMS (DUAL VOR RECEIVERS OR DME REQUIRED)					
S-LOC 28L	1060/24	393 (400-½)	1060/35	393 (400-5/8)	

CHICAGO, ILLINOIS
Orig-B 03JAN19

41°59'N-87°54'W

CHICAGO O'HARE INTL (ORD) ILS or LOC RWY 28L

EC-3, 09 JUL 2026 to 06 AUG 2026

EC-3, 09 JUL 2026 to 06 AUG 2026